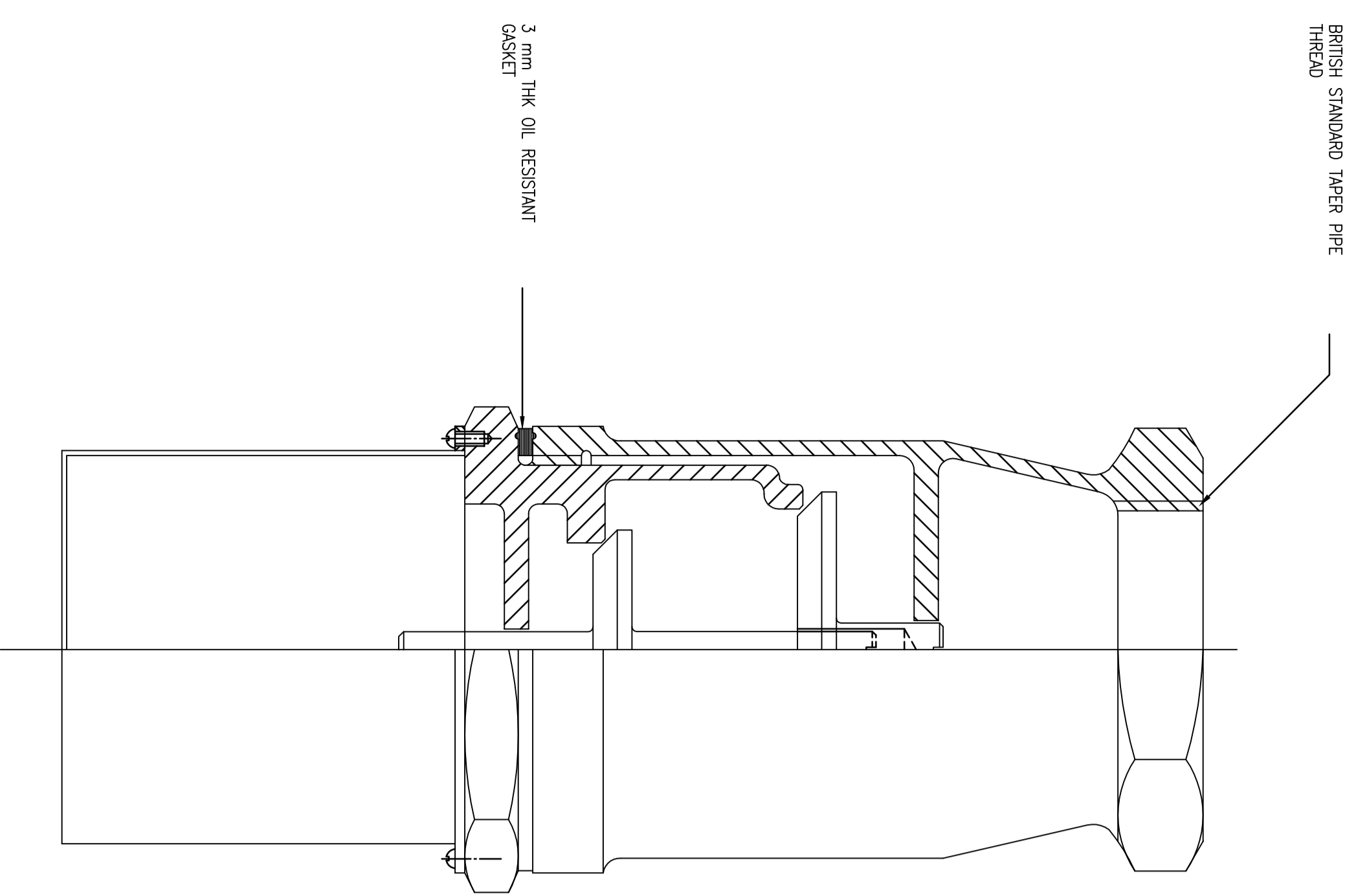
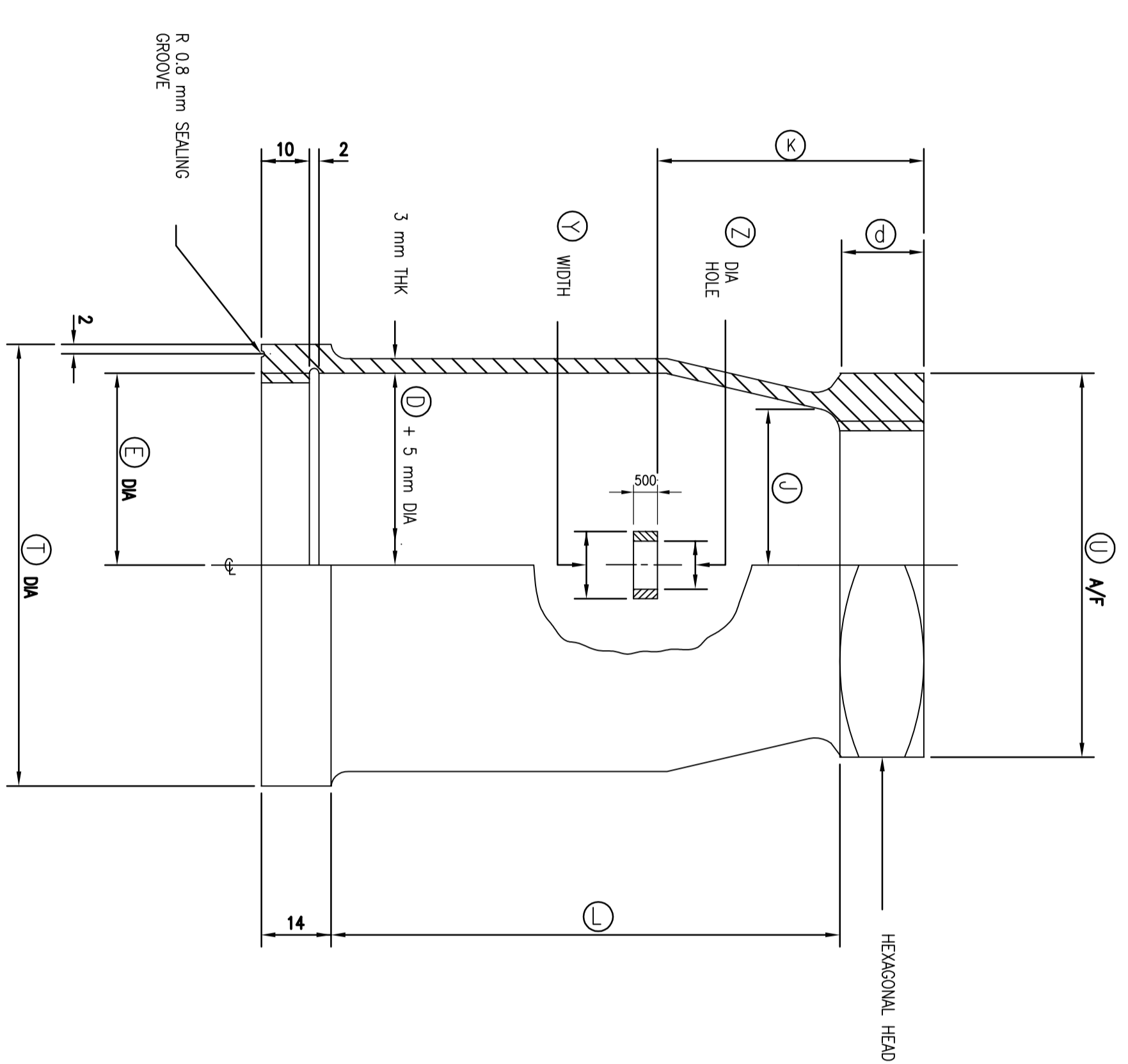


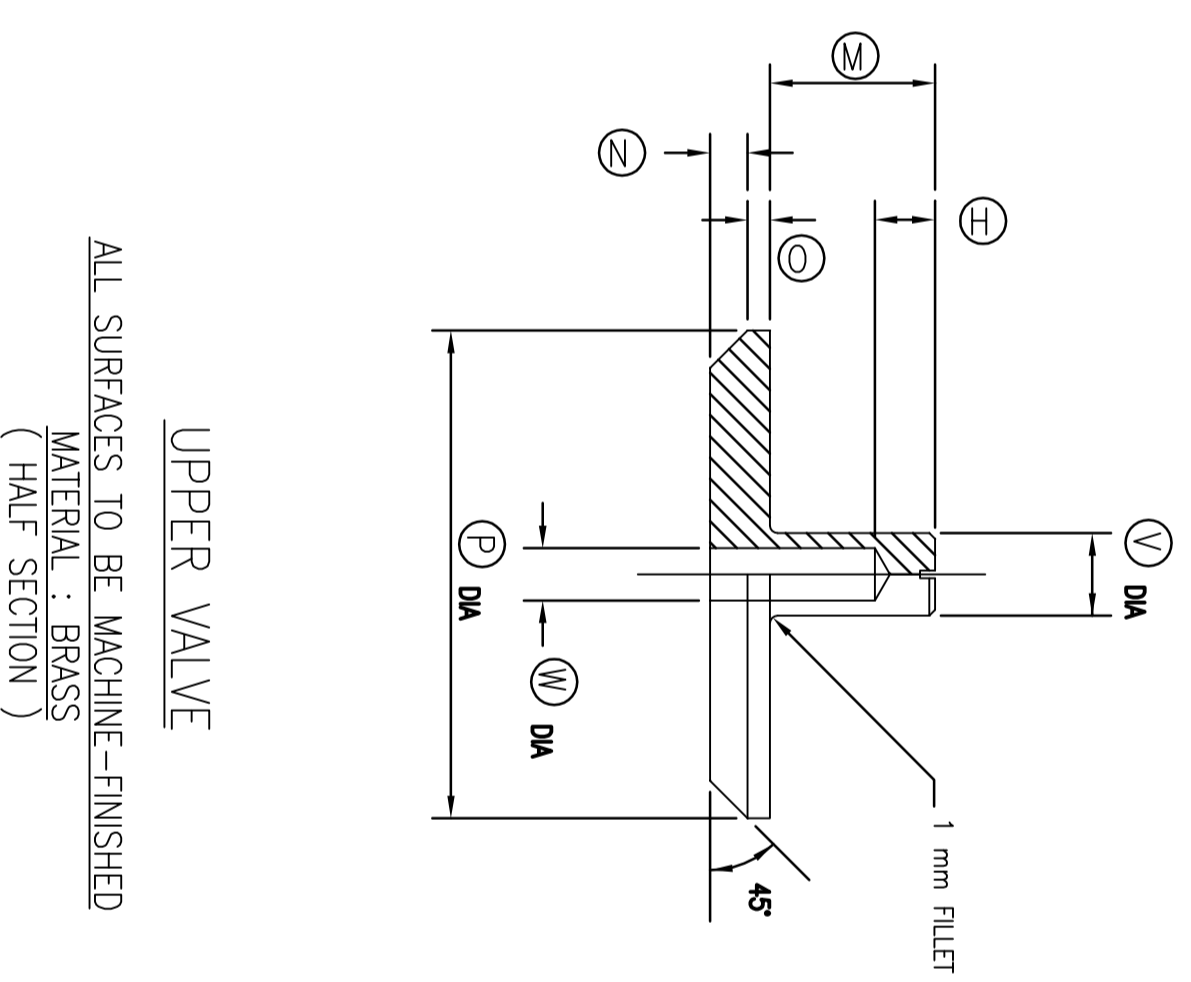
BRASS STANDARD TAPER PIPE  
(HOLE)



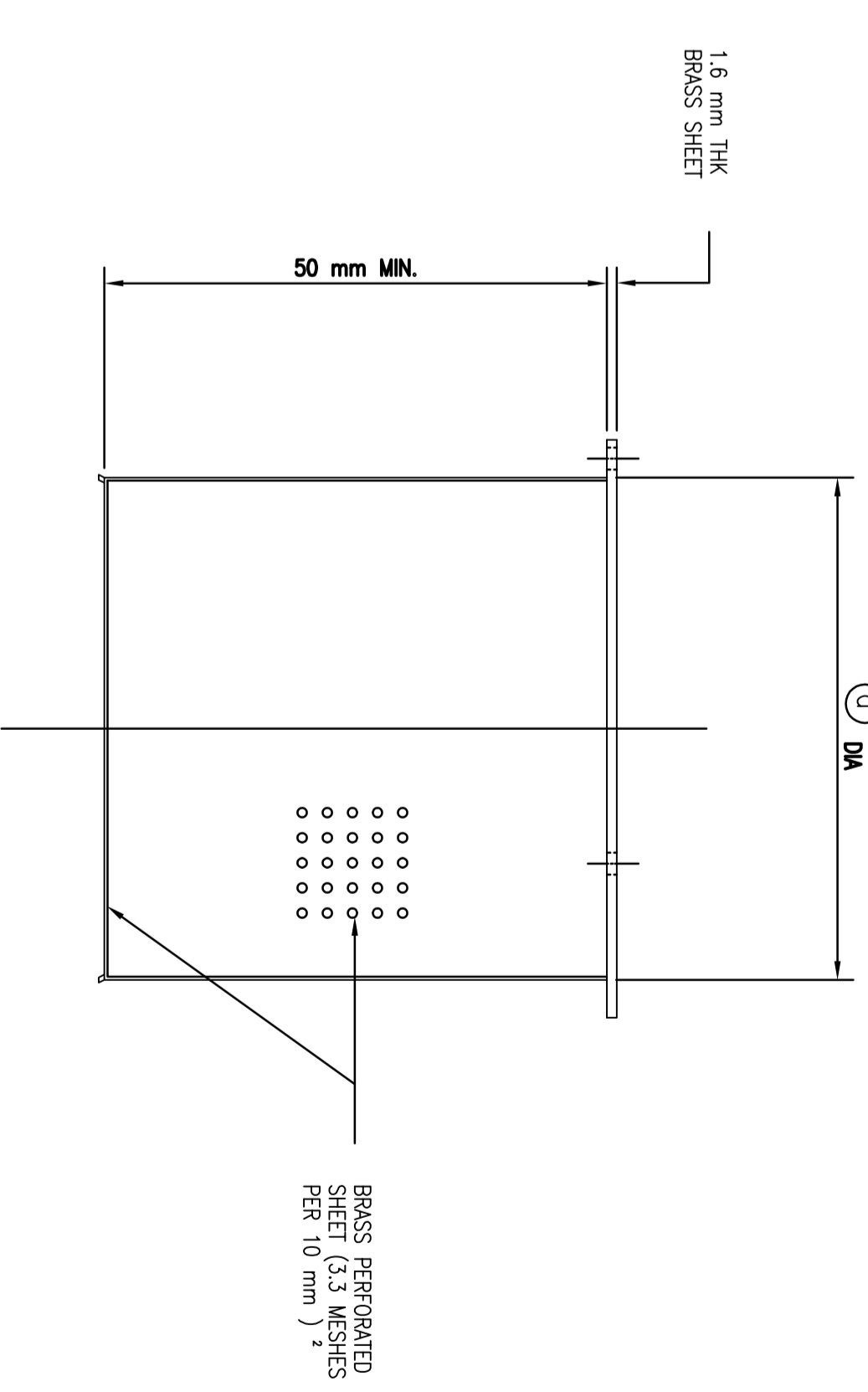
ASSEMBLED ELEVATION  
( HALF SECTION )



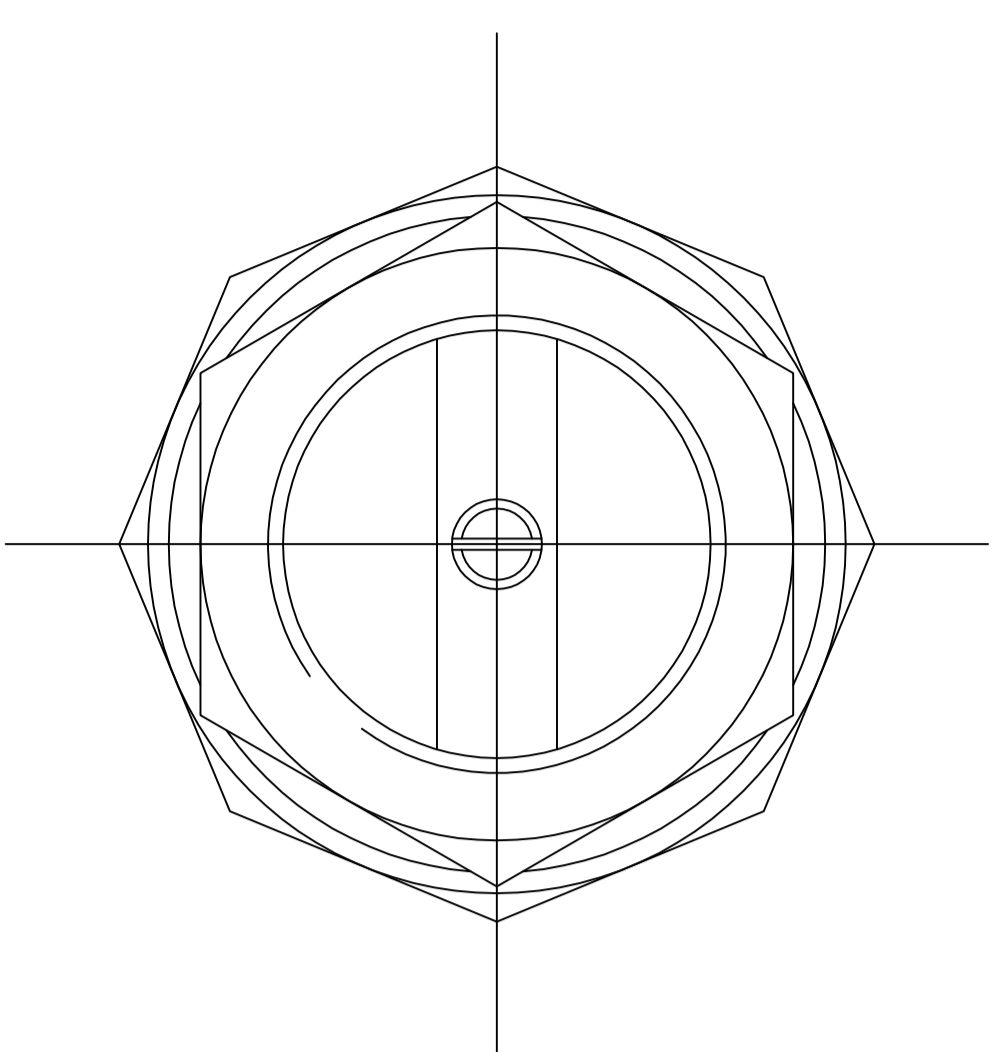
VALVE BODY  
MATERIAL : GUNMETAL  
( HALF SECTION )



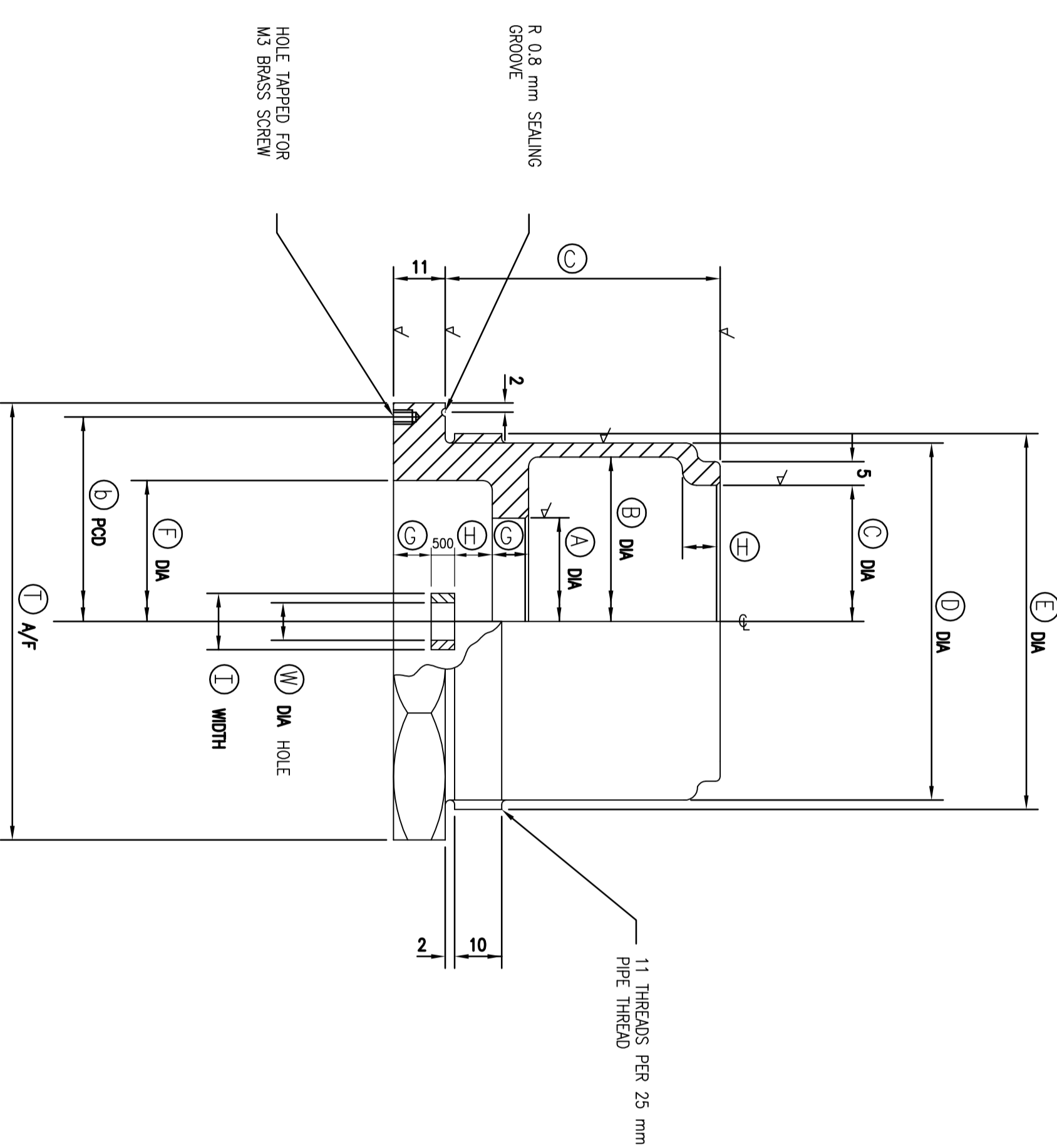
UPPER VALVE  
ALL SURFACES TO BE MACHINE-FINISHED  
( HALF SECTION )



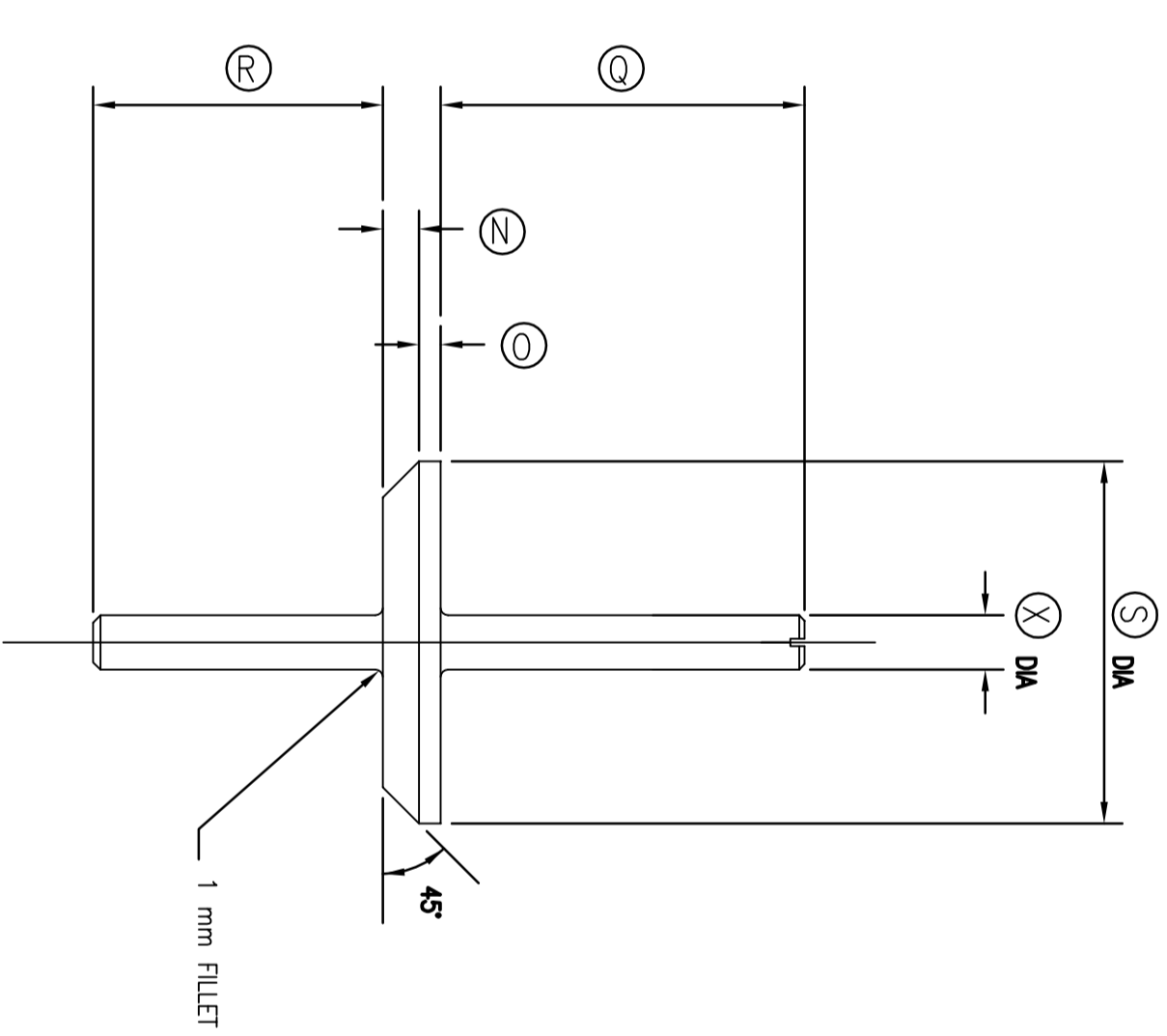
BRASS PERFORATED  
NET ( 1.2 mm )  
Fillet ( 0.2 mm )



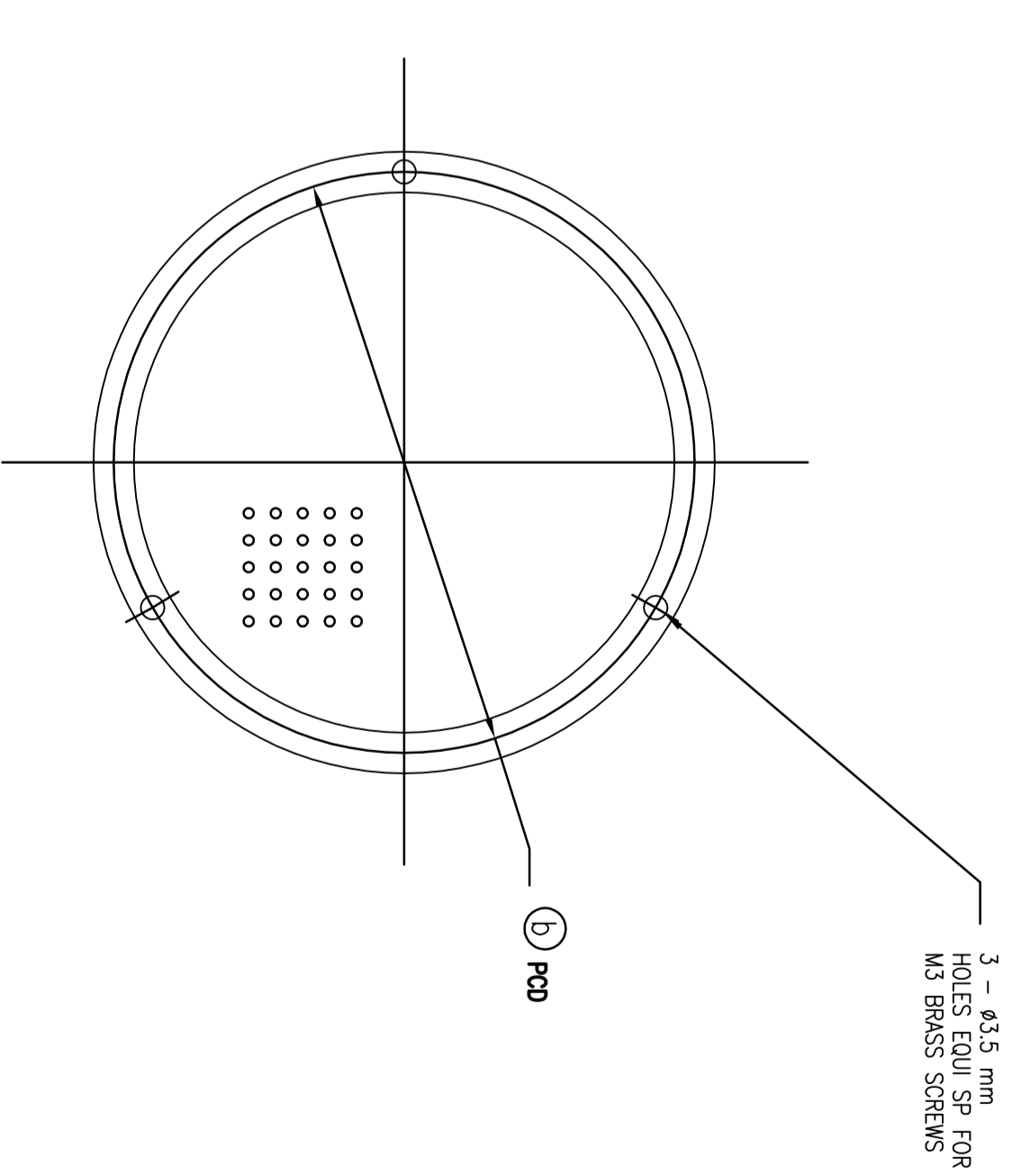
ASSEMBLED PLAN



VALVE SEAT  
MATERIAL : GUNMETAL  
( HALF SECTION )



LOWER VALVE  
ALL SURFACES TO BE MACHINE-FINISHED  
MATERIAL : BRASS



1 - 4.15 mm  
HOLES EQUI SP FOR  
M3 BRASS SCREWS

DIMENSIONS FOR DOUBLE FOOT VALVE																													
PIPE BORE	A	B	C	D	E	F	G	H	I	J	K	L	M	N	O	P	Q	R	S	T	U	V	W	X	Y	Z	a	b	d
20	16	29	22	35	41	25	3	5	10	29	34	48	19	2	2	25	26	32	19	51	41	10	6	5.5	15	10.5	38	44	10
25	21	34	28	40	46	32	4	7	10	35	34	56	20	3	2	32	30	29	25	56	44	10	6	5.5	15	10.5	43	49	10
32	28	45	34	51	57	38	5	8	10	45	40	64	21	3	2	38	32	33	32	67	54	10	6	5.5	15	10.5	54	60	14
40	33	51	43	57	63	44	6	8	11	50	42	78	24	4	3	48	37	38	38	73	60	11	7	6.5	16	11.5	61	67	16
50	44	70	58	76	82	60	8	10	11	64	55	105	25	5	3	64	50	40	51	92	79	11	7	6.5	16	11.5	80	86	18

REFERENCE DRAWING

Project no. 0P 10103

contract no. 0P 10103

date no. 10/07/11

checked by S.D. 10/20/04

drawn by C.S. 10/07/11

approved by 10/07/11

DOUBLE FOOT VALVE

P-10243-015-A

PROJECT DIVISION



- NOTES
- 1) ALL DIMENSIONS ARE IN mm.
  - 2) THE VALVE ASSEMBLY IS TO BE HYDRAULICALLY TESTED TO 200 kpa.
  - 3) F: MACHINE FINISHED