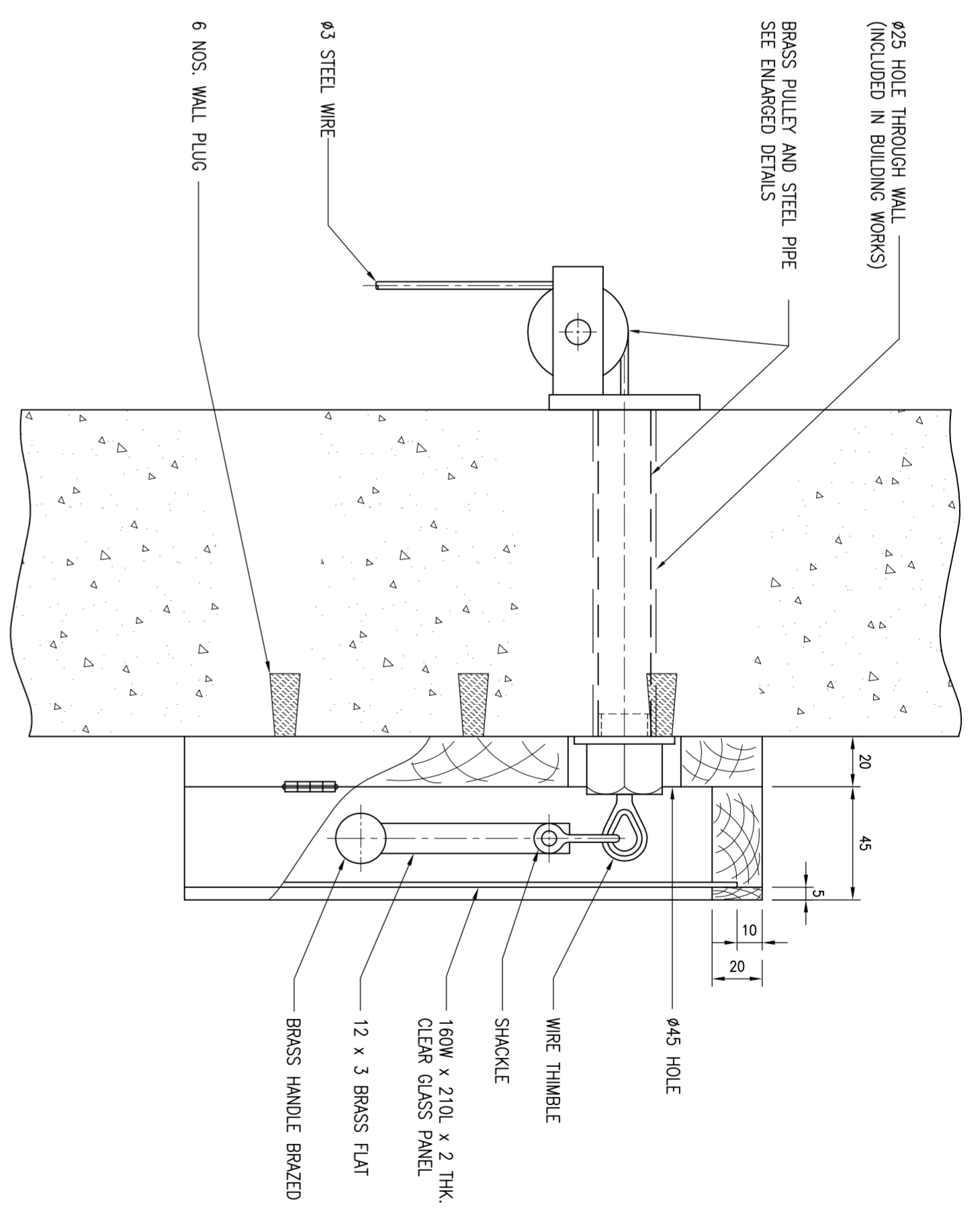
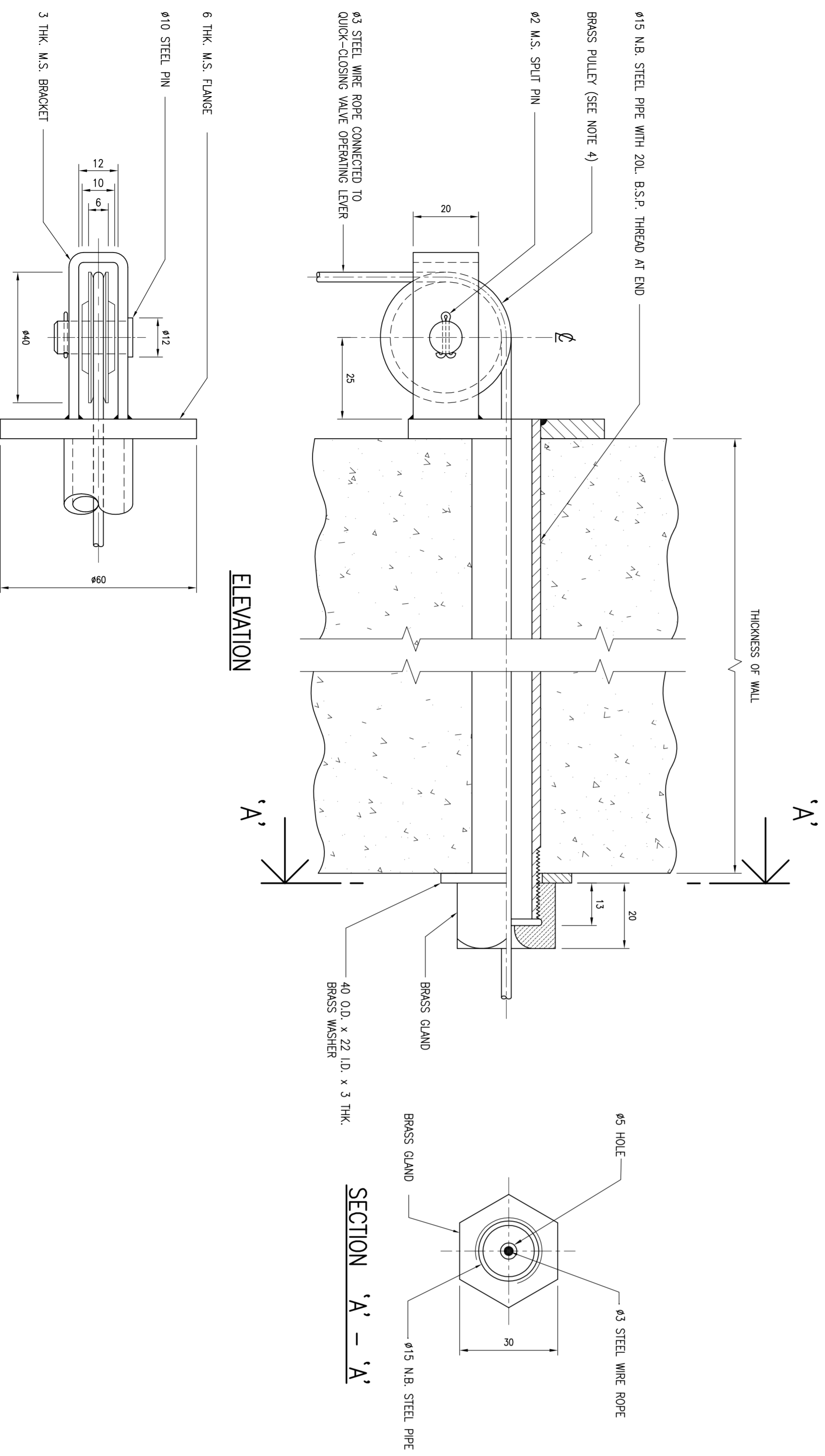


**SIDE ELEVATION**  
(SCALE 1 : 2)

**FRONT ELEVATION**  
(WITH FRONT COVER REMOVED)  
(SCALE 1 : 2)

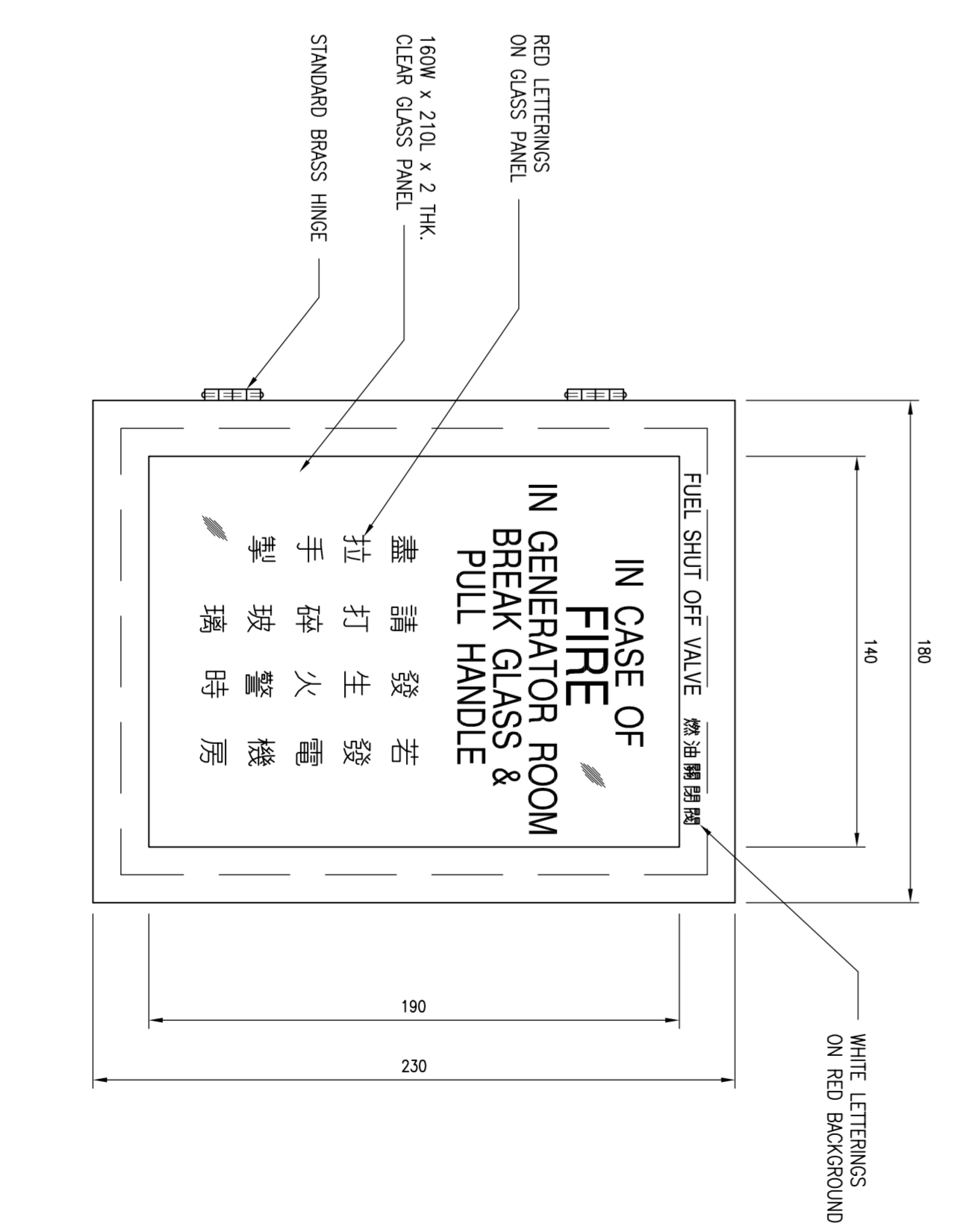


**SECTIONAL SIDE ELEVATION**  
(SCALE 1 : 2)



**ELEVATION**

**SECTION 'A' - 'A'**



**FRONT ELEVATION**  
(SCALE 1 : 2)

**PLAN**

**ENLARGED DETAILS OF BRASS PULLEY & STEEL PIPE**  
(SCALE 1 : 1)

- NOTES:
1. ALL DIMENSIONS ARE IN MILLIMETRES.
  2. THE WOODEN BOX AND THE LETTERINGS ON THE GLASS PANEL SHALL BE PAINTED RED.
  3. ALL OTHER METAL PARTS SHALL BE PAINTED WITH ONE COAT OF PRIMER AND TWO COATS OF GREY PAINT UNLESS OTHERWISE SPECIFIED.
  4. THE NUMBERS AND POSITIONS OF BRASS PULLEY WILL BE DETERMINED ON SITE TO SUIT.

no.	date	Description	initial
<b>REVISION</b>			
designed		name	date
checked			
dram			
approved			

Y.M. LI  
SPE/77  
contract no.  
file no. DP 10103  
project no.  
contract

**REFERENCE DRAWING**

INSTALLATION OF QUICK CLOSING MECHANISM FOR FUEL OIL SERVICES TANK

drawing no. P-10243-016-A  
scale AS SHOWN

PROJECT DIVISION

