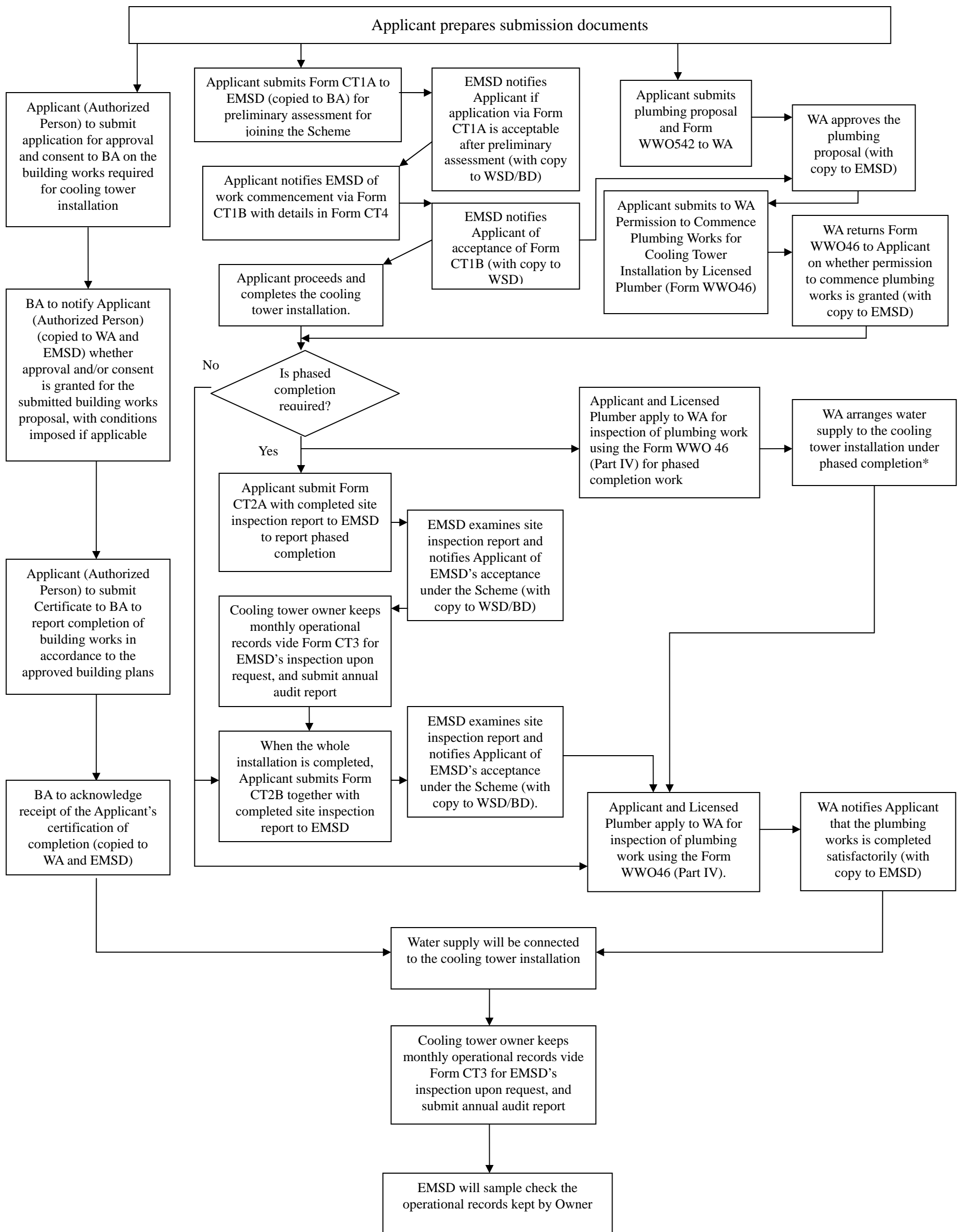


# Process Chart for Participation of the Scheme



\* Water supply will be effected if phased plumbing work is completed satisfactorily.

Note 1 : Form CT1A, CT1B, CT2A, CT2B, CT3 and CT4 are EMSD's standard forms for processing the application.

Note 2 : Alternative procedures for approval of minor works may be adopted under the Minor Works Control System (MWCS) which takes effect from 31.12.2010. Enquiries on MWCS can be made to the Buildings Department..