

## GUIDANCE NOTE GU20

# APPROVAL OF SEMI-FLEXIBLE GAS TUBING FOR LOW PRESSURE APPLICATIONS



## INDEX

SECTION 1	FOREWORD.....	1
SECTION 2	SCOPE AND TERMINOLOGY.....	4
2.1	SCOPE.....	4
2.2	REFERENCES.....	5
2.3	TERMINOLOGY.....	5
SECTION 3	PRE-APPROVAL CONDITIONS.....	9
3.1	DOCUMENTS TO BE SUBMITTED FOR TYPE APPROVAL APPLICATION.....	9
3.2	OTHER REQUIREMENTS.....	12
SECTION 4	POST-APPROVAL CONDITIONS.....	15
4.1	PROVISION OF CERTIFICATE OF COMPLIANCE BY THE MANUFACTURER.....	15
4.2	INSTALLATION INSTRUCTIONS, MARKING, LABELING AND PACKAGING BY THE MANUFACTURER.....	16
4.3	QUALITY ASSURANCE BY THE IMPORTER OR THE LOCAL MANUFACTURER.....	16
4.4	NOTIFICATION OF CHANGES BY THE IMPORTER OR LOCAL MANUFACTURER.....	17
4.5	RECORDS OF IMPORT OR MANUFACTURE AND SUPPLY.....	18
4.6	AUDIT OF MANUFACTURE OR IMPORT AND SUPPLY BY THE GAS AUTHORITY.....	18
4.7	NON-COMPLIANCE WITH POST-APPROVAL CONDITIONS BY THE IMPORTER OR THE LOCAL MANUFACTURER.....	19
SECTION 5	APPROVED LIST.....	20
5.1	APPROVED LIST.....	20
SECTION 6	APPENDICES.....	21
6.1	APPENDIX 1: FLOW CHART FOR TYPE APPROVAL OF SEMI-FLEXIBLE GAS TUBING FOR LOW PRESSURE APPLICATIONS.....	21
6.2	APPENDIX 2(a, b): APPLICATION FORM.....	21

## SECTION 1 Foreword

1.1 This guidance note, which describes the requirements for the approval by the Gas Authority of semi-flexible gas tubing for low pressure applications, has been prepared by the Gas Authority in consultation with importers of flexible gas tubing in Hong Kong. The requirements specified in the guidance note for a semi-flexible gas tubing to gain approval by the Gas Authority are mandatory.

1.2 The approval requirements contained within this guidance note apply to:

- (a) the semi-flexible gas tubing can only be installed for connecting to fixed gas installations such as a fixed type or an infrequent movement type gas appliance including gas water heaters and built-in hobs; and
- (b) the semi-flexible gas tubing cannot be used in installations subject to vibration.

The semi-flexible gas tubing shall be made of stainless steel material, e.g. grade 304, 316, 320 or 321.

1.3 Approval of semi-flexible gas tubing is a two-tier system consisting of (1) type approval and (2) validation of approval. Type approval of a model of semi-flexible gas tubing will be granted to an applicant in compliance with pre-approval conditions specified in Section 3 of this guidance note to:

- (a) import into; or
- (b) manufacture in Hong Kong,

a model of semi-flexible gas tubing for use in Hong Kong.

Having obtained type approval, the importer or local manufacturer shall secure validation of approval in the

continuing compliance with post-approval conditions specified in Section 4 of this guidance note.

- 1.4 This guidance note should not be regarded as exhaustive. It is not intended to relieve persons from undertaking the work of their statutory responsibilities in accordance with the safety legislation.
- 1.5 This guidance note does not purport to address all of the safety concerns, if any, associated with the safety requirements therein. It is the responsibility of the applicant / importer or local manufacturer to establish appropriate safety, health and environmental practices and determine the applicability of relevant regulatory requirements prior to use.
- 1.6 The approval does not derogate the responsibilities of the importer or the local manufacturer from fully complying with all other current relevant codes of practice, approval requirements, and statutory requirements of other government departments, bodies, etc. under the Laws of Hong Kong.
- 1.7 Approval by the Gas Authority does not imply, or guarantee production quality of shipments of semi-flexible gas tubing for use in Hong Kong. Importer or local manufacturer shall be fully responsible for the quality of semi-flexible gas tubing and must take all reasonable measures to monitor performance of manufacturers and implement any remedial measures arising from product safety and quality concerns (see Section 4.3)
- 1.8 An approved list will be maintained to publicize the approved models of semi-flexible gas tubing for low pressure applications (see Section 5). The Gas Authority will:
  - (a) assume no responsibilities for how the information contained in the approved List is used;

- (b) make no representations, warranties or endorsements whatsoever about the suitability of proprietary products and related services for individual users / applications, safety of products, fitness for purposes, merchantable quality, etc.; and
- (c) not be liable for any loss or damage or injury to any property or person however arises whether directly or indirectly as a result of referring to or using any information contained in the Approved List.

1.9 All gas installation work carried out in Hong Kong shall be in accordance with the Gas Safety Ordinance, Chapter 51, with particular reference to its subsidiary regulations, as follows:

- (a) Gas Safety (Gas Supply) Regulations;
- (b) Gas Safety (Installation and Use) Regulations;
- (c) Gas Safety (Miscellaneous) Regulations;
- (d) Gas Safety (Registration of Gas Installers and Gas Contractors) Regulations; and
- (e) Gas Safety (Registration of Gas Supply Companies) Regulations.

## SECTION 2 Scope and Terminology

### 2.1 Scope

2.1.1 An importer or a local manufacturer wishing to import or manufacture respectively for sale or supply of a model of semi-flexible gas tubing for use in Hong Kong shall apply to the Gas Authority for type approval. Attention is drawn to Regulation 3(1) of the Gas Safety (Miscellaneous) Regulations.

2.1.2 The approval conditions in this part of the guidance note apply to the approval of semi-flexible gas tubing for low pressure applications.

2.1.3 The approval conditions specified hereunder are subject to revision as deemed appropriate to keep abreast of up-to-date design technologies, safety and quality standards, etc. pertaining to newer or different types of semi-flexible gas tubing.

2.1.4 Approval of semi-flexible gas tubing consists of a two-tier system, which includes

- (a) Type approval subject to continuing compliance with pre-approval conditions (see flow chart in Appendix 1); and
- (b) Validation of approval subject to compliance with post-approval conditions,

And the detailed requirements are set out in Sections 3 and 4 of this guidance note respectively.

## 2.2 References

The list of national / international standards which have been accepted by the Gas Authority is available in EMSD's website for reference.

## 2.3 Terminology

**"Applicant"** means a person who applies for approval of a model of semi-flexible gas tubing from the Gas Authority with an intention to import into or manufacture in Hong Kong such model to be sold or supplied for use in Hong Kong. Applicant therefore refers to a prospective importer or a prospective local manufacturer registered for business in Hong Kong.

**"Approval"** consisting of type approval and validation of approval, means permission granted by the Gas Authority to an applicant in compliance with pre- and post-approval conditions to:

(a) import into; or

(b) manufacture in Hong Kong,

a model of semi-flexible gas tubing for use in Hong Kong.

**“Basic Safety Assessment Certificate”** means a certificate issued by a HOKLAS laboratory in Hong Kong to certify that a semi-flexible gas tubing complies with the basic safety assessment test. The scope and method of test shall be those specified in the HOKLAS laboratory’s test method and additional requirements prescribed by the Gas Authority by reference to recognized type-specific product safety standard(s) for semi-flexible gas tubing.

**“Semi-Flexible Gas Tubing”** means tubing which is:-

- (a) semi-rigid; and
- (b) used for connecting a gas fitting directly to a supply of gas.

**“Gas Authority”** means the public officer approved under Section 5 of the Gas Safety Ordinance Cap. 51.

**“HOKLAS”** means the Hong Kong Laboratory Accreditation Scheme under the charge of the Commissioner of Innovation and Technology on behalf of the Government of the Hong Kong Special Administrative Region.

**“Importer”** means a person who engages in the business of importation of semi-flexible gas tubing for supply,

sale or use in Hong Kong.

<b>“ International / National Safety Standards”</b>	means standards for semi-flexible gas tubing design, construction and safety performance issued or accepted by recognized certification authorities.
<b>“Low Pressure”</b>	means a gas pressure of not more than 7.5 kPa.
<b>“Manufacturer”</b>	means the maker of a semi-flexible gas tubing for use in Hong Kong.
<b>“ Recognized Certification Authority (RCA)”</b>	means an independent organization recognized by the Gas Authority which is empowered under law or decree, (e.g. notified body appointed by the Commission of European Communities), to certify that a semi-flexible gas tubing is designed and manufactured in compliance with international or national safety standard(s).
<b>“Registered Trademark”</b>	means a trademark registered under Section 47 of the Trade Marks Ordinance, Cap. 559.
<b>“Service Life”</b>	means a theoretical time period in which a semi-flexible gas tubing can last for service / use in a gas installation without posing a potential hazard. The expiry date of

service life may not be applicable to semi-flexible gas tubing subject to prior endorsement by the Gas Authority.

**“ Type Test Certificate ”** means a certificate issued by a Recognized Certification Authority to certify that a semi-flexible gas tubing complies with relevant international or national safety standard(s).

## SECTION 3 Pre-Approval Conditions

### 3.1 Documents to be Submitted for Type Approval Application

The applicant shall fill in a prescribed application form and submit relevant documents in Chinese or English to confirm that the following requirements for semi-flexible gas tubing are complied with:

#### 3.1.1 Manufacturer's Capabilities and Technical Documentation

The applicant shall provide the manufacturer's company profile, technical information and specifications of a model of semi-flexible gas tubing including catalogue, construction drawing including dimensions such as length, diameter and thickness, detail of connection fitting, details of manufacturing facilities, job references, etc.

#### 3.1.2 Manufacturer' Production Quality System Certification

The manufacturer's production processes shall incorporate a quality system certified to a recognized international or national quality standard (to ISO 9001 or equivalent), by an accredited organization recognized by the Gas Authority to assure:-

- (a) the quality of components and materials supplied by vendors or sub-contractors which are critical to the safe operation of the products;
- (b) the quality at each stage in production and assembly processes; and
- (c) the quality of products.

Original or certified true copy of certification documents shall be submitted upon application for type approval.

### 3.1.3 Manufacturer's Vendors' Production Quality System Certification

The manufacturer's works must have rigorous incoming material inspection procedure, otherwise the vendors / sub-contractors supplying materials which are critical to the safe operation of the product (e.g. components made of stainless steel materials, fastener for end-connections, etc.) must have a quality system certified to recognized international or national standards (to ISO 9001 or equivalent) by an accredited organization recognized by the Gas Authority. Original or certified true copy of certification documents shall be submitted upon application for type approval.

### 3.1.4 Type Test Certification

The semi-flexible gas tubing shall be manufactured in accordance with a recognized international or national safety standard. Original or certified true copy of type test certificate for a model of semi-flexible gas tubing issued by a recognized certification authority (RCA) confirming the following requirements shall be submitted:-

- (a) the model has successfully completed tests in accordance with a recognized international or national product safety standards (for example AS, BS, etc.);
- (b) the model is suitable for particular gas type(s) distributed in Hong Kong; and
- (c) the model is compatible with the standards of gas fittings being used in Hong Kong.

### 3.1.5 Basic Safety Assessment Certification

The applicant shall supply the prescribed number of lengths of a model of semi-flexible gas tubing to a HOKLAS laboratory in Hong Kong with notification to the Gas Authority for carrying out a Basic Safety Assessment Test in accordance with the "Testing Method for Basic Safety Assessment Certification" (the testing method could be found and downloaded from EMSD's website) and any additional requirements as prescribed by the Gas Authority by reference to recognized type-specific product safety standard(s). A Basic Safety Assessment Certificate issued by the HOKLAS laboratory shall thus be obtained and submitted to the Gas Authority.

#### 3.1.6 Installation Instructions

Semi-flexible gas tubing shall be supplied by the manufacturer with installation instructions accepted by the RCA responsible for issuing the type test certificate. Installation instructions shall be printed in Chinese and, if deemed necessary, in English as well. Diagrams / drawings may include some technical terms in English where such terms are commonly used and applied by registered gas installers. However, all instructions relating to safety of installation must include Chinese version.

#### 3.1.7 Statement by the Manufacturer

The manufacturer shall provide a statement or undertaking on the collaboration between the manufacturer and the applicant, the manufacturer's support to be rendered to the applicant in Hong Kong, the anticipated service life of the semi-flexible gas tubing and declaration of undertaking of compliance with the Gas Authority's requirements as set out in Sections 3 and 4 of this guidance note.

#### 3.1.8 Statement by the Applicant

The applicant shall provide a statement of undertaking

confirming that after the granting of type approval, he / she will comply with the post-approval conditions as set out in Section 4 of this guidance note. The applicant shall also demonstrate its capability and standing as a part of the local gas industry and the continuing technical support it will provide to the supply chain. Company organization chart and copy of Business Registration Certificate shall be submitted. When not being a registered gas contractor, the applicant shall demonstrate that he / she has arranged adequate technical support to be provided by a registered gas contractor in providing gas installation work and assistance whenever necessary in dealing with remedial measures and quality assurance as described in Sections 3.1.9 and 4.3 respectively.

#### 3.1.9 Manual of Remedial Measures

The applicant shall compile a "Manual of Remedial Measures" documenting details of organization, contact person and procedures to take corrective actions promptly and effectively in the event of a product problem / defect involving safety arising after the product has been supplied or installed. Measures such as product recall / recovery actions shall be detailed in the Manual. The applicant shall confirm in the Manual the assumption of all responsibilities and liabilities arising from taking all necessary remedial measures pertaining to the product.

### 3.2 Other Requirements

#### 3.2.1 Approval Marking and Product Description Labeling of Semi-Flexible Gas Tubing

A semi-flexible gas tubing shall be supplied by the manufacturer displaying a legibly, permanently and durably imprinted approval marking of style and size to the satisfaction of the Gas Authority in the format "EMSD APPROVAL GTxxxx" in English and imprinting or affixing a label in the format "機電工程署批准 GTxxxx" in Chinese (where xxxx is a unique code assigned to the approved

model of semi-flexible gas tubing by the Gas Authority). The size of marking should be at least 5mm high.

It is also recommended that the semi-flexible gas tubing should be imprinted or labeled in description to indicate essential product, batch information (post approval information) and cautions for installation instructions as follows:

(a) Product Information

Imprinting or labeling for the purpose of distinguishing the product including but not limited to:

- manufacturer;
- importer;
- model code; and
- if necessary, registered trademark as determined by the importer or the manufacturer.

(b) Batch Information

Imprinting or labeling for the purpose of identifying the batch of product including but not limited to:

- batch code

(c) Cautions for Installation Instructions

It is required to have the tubing labeling cautions for essential installation instructions in English and Chinese specified by the manufacturer for the purpose of reminding to the installers including but not limited to:

- repeated bending should be avoided at the same

location of the tubing;

- the minimum bending radius of the tubing;
- the minimum bending distance between two end connectors;
- the tubing should not be subject to excessive heat, stresses and vibration; and
- the tubing should be appropriately secured by clips to maintain its position after installation.

The proposed details of the approval marking, the product description labeling and cautions for installation instructions shall be provided to the Gas Authority when the application for approval is submitted.

### 3.2.2 Samples of Semi-Flexible Gas Tubing

The applicant shall provide to the Gas Authority prescribed number of samples of a model of semi-flexible gas tubing complete with sample marking and labeling for evaluation with a view to obtaining type approval.

## SECTION 4 Post-Approval Conditions

Upon obtaining type approval and thereafter to secure validation of approval for on-going import or local manufacture of the model of semi-flexible gas tubing, the importer or local manufacturer shall continue to comply with all post-approval conditions specified in this Section and undertake to submit a half-yearly report to the Gas Authority advising on stock records of manufacture, import and supply of the semi-flexible gas tubing.

### **4.1 Provision of Certificate of Compliance by the Manufacturer**

4.1.1 Each batch of tubing manufactured shall be accompanied by a certificate of compliance prepared by the manufacturer. This shall confirm:-

- (a) that the batch of tubing has been manufactured under a production quality system certified to a recognized international or national standard (see Sections 3.1.2 and 3.1.3) and in compliance with the original international or national product safety standard (see Section 3.1.4) and other requirements (see Sections 3.1.5, 3.2.1 and 4.3); and
- (b) the location of manufacture as depicted in the type test certificate issued by the RCA and / or otherwise stated by the manufacturer prior to type approval.

The importer or local manufacturer shall keep full records of certificates of compliance for inspection at the request of the Gas Authority.

## 4.2 Installation Instructions, Marking, Labeling and Packaging by the Manufacturer

4.2.1 Semi-flexible gas tubing shall be supplied with installation instructions, marking and labeling as detailed in Sections 3.1.6 and 3.2.1 respectively.

4.2.2 Semi-flexible gas tubing shall be supplied by the manufacturer in packaging that affords maximum protection. Tubing in prescribed quantities shall be packed in containers displaying outer descriptions printed in Chinese and / or English.

## 4.3 Quality Assurance by the Importer or Local Manufacturer

4.3.1 The importer or local manufacturer is required to satisfy himself / herself with the continued quality of approved tubing marketed in Hong Kong. Where the occurrence of substantiated complaint or incident indicates that a batch of semi-flexible gas tubing fails to comply with safety or quality requirements or poses a potential safety hazard to the public, the existing and forthcoming distribution, supply or sale of the model of semi-flexible gas tubing for use in Hong Kong must be suspended immediately. The case must be reported to the Gas Authority for investigation without delay. Depending on the severity, it may result in suspension or withdrawal of type approval, cessation of supply or sale and / or initiation of product recall pending appropriate recovery actions for correction of any variance in design or production. The actions documented in the "Manual of Remedial Measures" shall be implemented by the importer or local manufacturer and, if necessary, in conjunction with the registered gas contractor referred to in Section 3.1.9, after consultation with the Gas Authority, in a prompt and effective manner. Attention is drawn to compliance with Regulations 3(2) and (3) of the Gas Safety (Miscellaneous) Regulations.

4.3.2 At least once per year commencing from the date of type

approval, including the first batch of each year, the importer or local manufacturer shall arrange a HOKLAS Laboratory in Hong Kong to undertake sampling and testing of a sample lot of each model of semi-flexible gas tubing taken from a concurrent batch of semi-flexible gas tubing being imported or manufactured for quality assurance. The lot size shall be determined in accordance with the requirements of the current edition of ISO 2859-1 "Sampling Procedures for Inspection by Attributes – Part 1: Sampling schemes indexed by acceptable quality limit (AQL) for lot-by-lot inspection". The scope and method of test shall be identical to the basic safety assessment test as detailed in Section 3.1.5 of this code. The Gas Authority shall be notified in advance in writing of the arrangement of the test, may witness the test, and shall receive a copy of the test report. If the sample from the batch fails the test, an inquiry will be conducted by the Gas Authority with the importer or the local manufacturer. The Gas Authority may request the Recognised Certification Authority to investigate and initiate actions in the "Manual of Remedial Measures". The approval of semi-flexible gas tubing will be suspended, pending the Gas Authority's satisfaction that problems leading to the failure have been rectified.

4.3.3 The importer shall prepare and maintain a product quality control procedures so as to satisfy himself / herself with the continued quality of approved tubing marketed in Hong Kong. The importer shall, but not be limited to, require the manufacturer to carry out sample test and provide the certificate of compliance (Clause 4.1.1 is referred) for *each batch* of products to be delivered to Hong Kong. The importer shall keep this test report and declaration of conformity for inspection by the Gas Authority for a period of not less than two years after the product imported in Hong Kong.

#### **4.4 Notification of Changes by the Importer or Local Manufacturer**

4.4.1 It is the sole responsibility of the importer or local

manufacturer to ensure validity of all relevant certification documents in order to sustain the continuation of approval of the semi-flexible gas tubing. The manufacturer shall promptly report to the RCA and the importer, and the importer or local manufacturer shall, in turn, within 14 days report to the Gas Authority any change in particulars of the semi-flexible gas tubing pertaining to Section 3.1 above. In case there are critical changes such as invalidation of quality system or type test certification, change in location of manufacture, etc., the approval shall automatically be revoked at the same time. In this connection, the importer or local manufacturer shall submit valid certification document(s) to the Gas Authority in order to secure further approval or re-approval as the case may be. All stock of product imported or locally manufactured shall be withheld for supply in Hong Kong pending completion of inquiry by the Gas Authority, and subject to the outcome of inquiry, re-approval of the model of semi-flexible gas tubing in accordance with Section 3 of this guidance note may be required by the Gas Authority.

#### **4.5 Records of Import or Manufacture and Supply**

4.5.1 Records of import or manufacture and supply shall be made available by the importer or local manufacturer for inspection by the Gas Authority for a period covering at least the last two years at any time. A summary of the relevant records shall be submitted to the Gas Authority at half-yearly intervals. In addition, the Gas Authority may request the importer or local manufacturer to produce a summary record on an ad hoc basis should circumstances warrant.

#### **4.6 Audit of Manufacture or Import and Supply by the Gas Authority**

4.6.1 The Gas Authority may conduct scheduled or unscheduled audit at the premises of the importer or the manufacturer to monitor compliance with the guidance note and regulations at

any time. It is the duty of the importer or the local manufacturer to co-operate and facilitate the smooth conduction of the audits.

#### **4.7 Non-Compliance with Post-Approval Conditions by the Importer or Local Manufacturer**

4.7.1 The Gas Authority may institute proceedings for the prosecution of an offence or conduct disciplinary actions such as warning, reprimand, suspension of approval or withdrawal of approval against an importer or local manufacturer who fails to comply with the post-approval conditions specified in this Section of the guidance note as the case may be.

## SECTION 5 Approved List

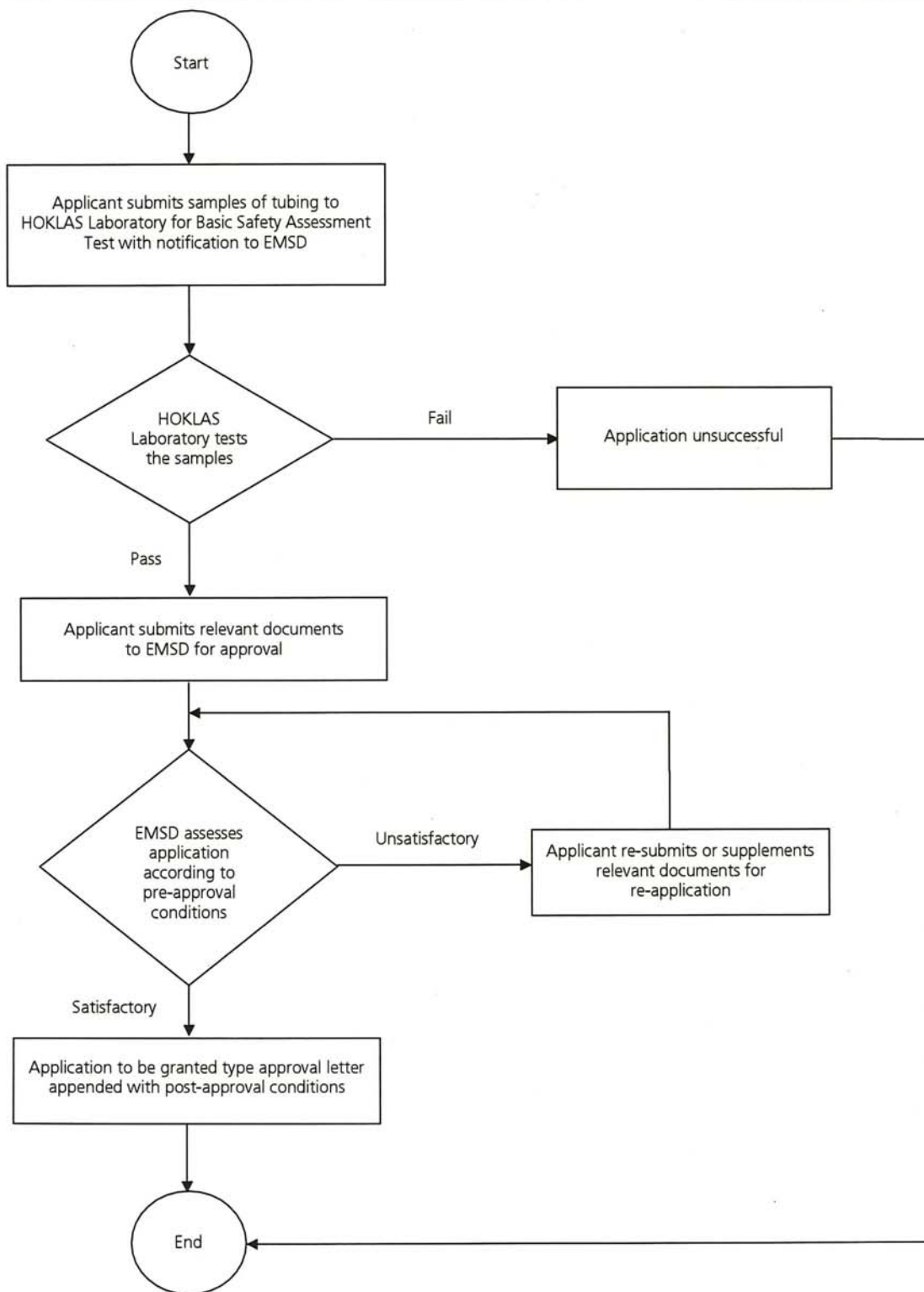
- 5.1 Approved models of semi-flexible gas tubing for low pressure applications will be entered into an approved list available for inspection at the office of the Gas Authority and at the EMSD web site. Models of semi-flexible gas tubing which have been suspended or withdrawn will be listed inside the same approved list.

## SECTION 6 Appendices

- 6.1 **Appendix 1:** Flow Chart for Type Approval of Semi-Flexible Gas Tubing for Low Pressure Applications Pursuant to Regulation 3 of the Gas Safety (Miscellaneous) Regulations, Gas Safety Ordinance (Cap. 51)
  
- 6.2 **Appendix 2(a, b):** Application Form

**Appendix 1**

**Flow Chart for Type Approval of Semi-Flexible Gas Tubing for Low Pressure Applications Pursuant to Regulation 3 of the Gas Safety (Miscellaneous) Regulations Gas Safety Ordinance (Cap. 51)**



## Appendix 2a



**APPLICATION FORM 申請表**  
**APPROVAL OF SEMI-FLEXIBLE GAS TUBING FOR LOW PRESSURE APPLICATIONS**  
 低壓氣體接駁半軟硬喉的批准

## A. Applicant Information 申請人資料

Applicant: *importer / local manufacturer\**

申請人：進口商 / 本地製造商\*

Company Name 公司名稱：\_\_\_\_\_ BRC No. 商業登記証號碼：\_\_\_\_\_

Address 地址：\_\_\_\_\_

Contact Person 聯絡人：\_\_\_\_\_ Telephone 電話：\_\_\_\_\_

Fax 傳真：\_\_\_\_\_ E-mail Address 電子郵箱：\_\_\_\_\_

## B. Information of Semi-Flexible Gas Tubing 氣體接駁半軟硬喉資料

The following model of semi-flexible gas tubing is submitted for Type Approval

現呈交以下氣體接駁半軟硬喉作類型設計批准

Manufacturer 製造商	Brand Name / Model 牌子 / 型號	Place of Manufacture 製造地點	Gas Type 氣體種類	Nominal Bore Diameter (mm) 標稱直徑 (毫米)	Overall Length (mm) 總長度 (毫米)	Manufacturing Standard 製造標準

## C. Documents / Certificates 文件/證明書

Please enclose the following documents with reference to the Guidance Note GU20 - "Approval of Semi-Flexible Gas Tubing for Low Pressure Applications" and put a "✓" against the appropriate box(es) for processing of your application for approval.

請參閱氣體應用指南之二十「低壓氣體接駁半軟硬喉的批准」，並附上下列所需文件，及於空格內加上"✓"號以便處理閣下的申請

- (1) Product catalogue of the semi-flexible gas tubing containing the model number  
包含氣體接駁半軟硬喉型號的產品說明書
- (2) Drawing of the tubing, including length, diameter, thickness, detail of fitting  
氣體接駁半軟硬喉的繪圖，須顯示該氣喉的尺寸、直徑、壁厚及接駁配件詳細情況
- (3) Brochure of the manufacturer and material vendors or contractors, if any, including information on company profile, country of manufacture and address of works, etc.  
製造廠商的簡介包括公司概況、製造國家及工廠的詳細地址，若有其它物料供應商或承辦商亦須提供
- (4) Specification and standard of manufacture of the tubing. A copy of the specification / standard shall be made available upon request  
氣體接駁半軟硬喉的製造規格及國際標準，在有需要時須向本署提供該製造規格及國際標準
- (5) Original or certified true copy of the Quality Management System Certificate for the manufacturer's works, e.g. ISO 9000 or equivalent issued by a recognized Certification Body  
製造廠商的品質管理體系核證 (例如 ISO 9000) 的證明書正本或核證副本

\*delete where not applicable 將不適用者刪去

**Appendix 2b**

- (6) Original or certified true copy of the Quality Management System Certificate for the manufacturer's material vendor and / or contractor, e.g. ISO 9000 or equivalent issued by a recognized Certification Body  
製造廠商的其它物料供應商或承辦商的品質管理體系核證 (例如 ISO 9000) 的證明書正本或核證副本
- (7) Original or certified true copy of Type-test Certificate issued by a Recognized Certification Authority (RCA)  
認可核證機構簽發有關氣體接駁半軟硬喉的類型測試證明書的正本或核證副本
- (8) Basic Safety Assessment Certificate issued by a recognized HOKLAS Laboratory in Hong Kong  
香港政府認可實驗室發出的基本安全評估證明書
- (9) Installation Instructions by manufacturer  
製造廠商草擬的安裝說明書
- (10) Statement by the manufacturer on the partnership between the manufacturer and the importer, and the manufacturer's support for their products in Hong Kong  
製造廠商與氣體接駁半軟硬喉進口商的伙伴關係，製造廠商對其進口香港的氣候提供有關支援的聲明
- (11) Declaration of compliance with GU20 requirements including approval conditions (pre-approval and post-approval conditions) by manufacturer  
製造廠商作出對進口香港的氣體接駁半軟硬喉能符合 GU20 批准要求 (包括批准前及批准後條件) 的聲明
- (12) Statement by importer stating its capability and standing as a part of the local gas industry, the technical support which will be provided by a Registered Gas Contractor on the product to buyers (please submit company organization chart and copy of Business Registration Certificate)  
進口商作出其於本地氣體行業的地位、能力及已安排由註冊氣體工程承辦商對氣體接駁半軟硬喉客戶提供技術支援的陳述 (請附上公司架構圖及商業登記證副本)
- (13) Declaration of compliance with GU20 requirements including approval conditions (pre-approval and post-approval conditions) by importer  
進口商作出對進口香港的氣體接駁半軟硬喉能符合 GU20 批准要求 (包括批准前及批准後條件) 的聲明
- (14) Manual of Remedial Measures by importer or local manufacturer  
進口商或本地製造廠商草擬的「補救措施手冊」
- (15) Proposed marking or labeling  
在氣體接駁半軟硬喉上的標記或標籤

(Note: Incomplete or erroneous information pertaining to the above may cause delay in processing application)  
(註：以上資料如有不全或錯漏，可能導致處理申請延誤)

#### D. Declaration 聲明

We declare that the information given in this form and in any document attached to our application for approval of semi-flexible gas tubing is true and correct and pledge to comply with all the requirements on the Guidance Note GU20 - "Approval of Semi-Flexible Gas Tubing for Low Pressure Applications".

本公司謹此聲明，此申請表及所有隨本氣體接駁半軟硬喉批准申請的附件所呈報的資料均屬真確，並承諾遵守氣體應用指南之二十「低壓氣體接駁半軟硬喉的批准」的所有規定。

Authorized Signature 授權人簽署： \_\_\_\_\_

Name 姓名： \_\_\_\_\_

Title 職位： \_\_\_\_\_

Date 日期： \_\_\_\_\_

Company Chop  
公司蓋印