



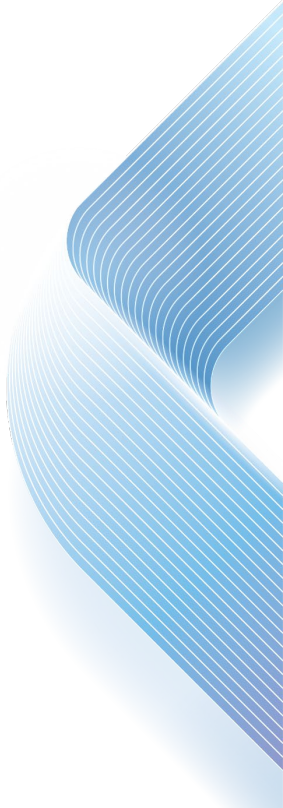
# Briefing Sessions on the Buildings Energy Efficiency Ordinance (Cap. 610) for Registered Energy Assessors

6 Feb 2024 & 7 Mar 2024

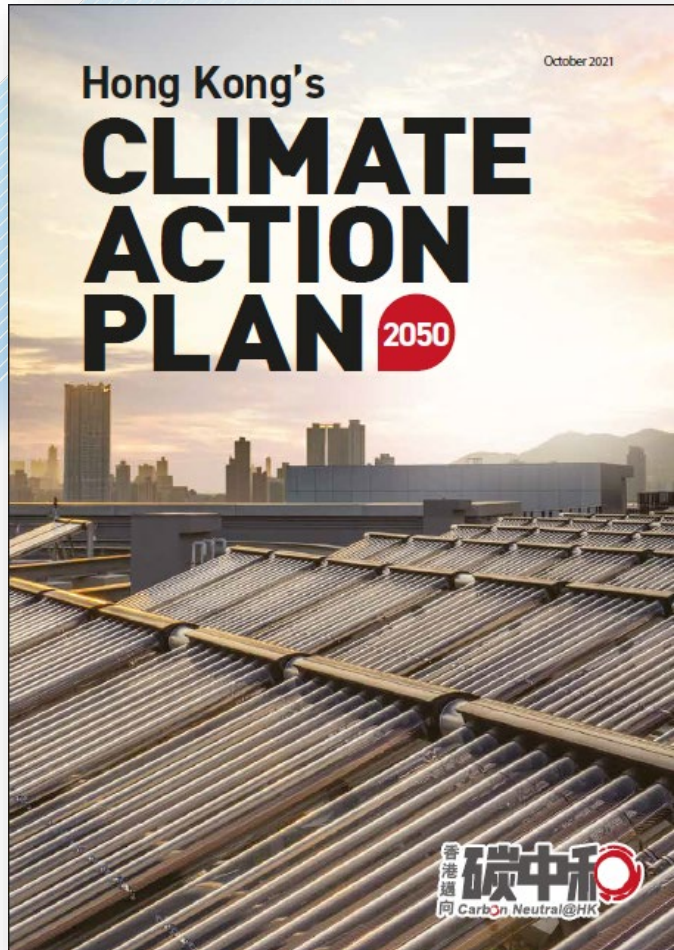








## Topics


- Background
  - Major Requirement in BEEO
  - E-submission
  - Common Irregularities
  - COCR Renewal
  - Proposed Legislative Amendments to the BEEO
- 

# Hong Kong's Climate Action Plan 2050




**Before 2035**

**Total carbon emissions**  
 Compared with 2005 level



**Before 2050**

**香港邁向 碳中和**  
 Carbon Neutral@HK


**2035**  
 Electricity consumption  
 (Compared with 2015)


**COMMERCIAL BUILDINGS**  
**15-20%**  
 (Reduce by 30-40% subsequently)

**RESIDENTIAL BUILDINGS**  
**10-15%**  
 (Reduce by 20-30% subsequently)


## Four decarbonisation strategies




**Net-zero Electricity Generation**



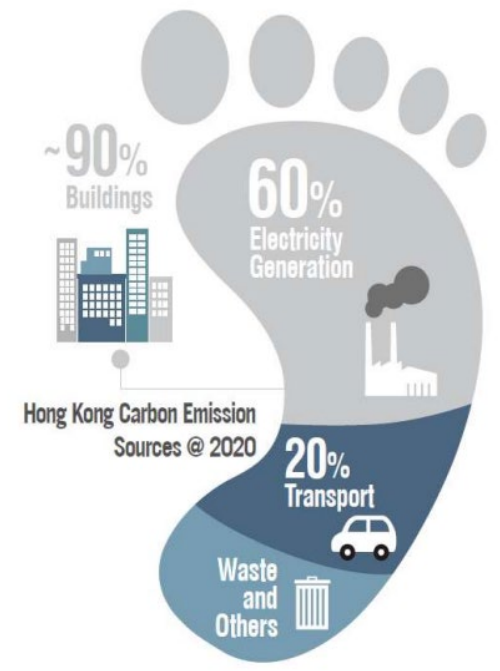
**Energy Saving and Green Buildings**



**Green Transport**



**Waste Reduction**



Source: Hong Kong Climate Action Plan 2050, (Oct 2021)

# Buildings Energy Efficiency Ordinance Cap. 610 (BEEO)

✓ Full Implementation on 21 September 2012

4 types of Prescribed  
Building Services Installation (BSI)

EMSD Buildings Energy Efficiency Ordinance (Cap. 610)

**BUILDINGS ENERGY EFFICIENCY ORDINANCE (CAP. 610)**  
《建築物能源效益條例》第610章

空調裝置  
Air-conditioning Installation

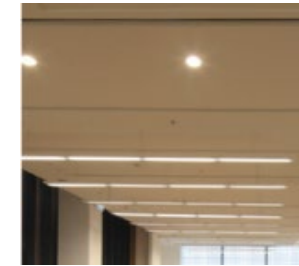
照明裝置  
Lighting Installation

電力裝置  
Electrical Installation

升降機及自動梯裝置  
Lift and escalator Installation

English 繁體中文 簡體中文

This graphic features a blue background with a city skyline. It includes four inset images: a building under construction for air-conditioning, a modern interior hallway for lighting, a server room for electrical, and a modern building with a glass facade for lift and escalator. Two cartoon characters, a bear wearing a hard hat and a small robot, are positioned in the center. At the bottom, there are three buttons for language selection: English, 繁體中文, and 簡體中文.



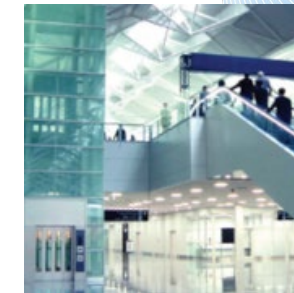
Lighting



Electrical



Air-conditioning



Lift & Escalator



<http://www.emsd.gov.hk/beeo>



# Legislative Framework

**Ordinance**

**Cap 610 - Buildings Energy Efficiency Ordinance (BEEO)**

**Effective since  
Sep 2012**

**Subsidiary  
Legislation  
(Regulation)**

**Cap 610A**  
Buildings Energy Efficiency  
(Fees) Regulation

**Cap 610B**  
Buildings Energy Efficiency  
(Registered Energy  
Assessors) Regulation

**Code of  
Practice**

**Building Energy Code  
(BEC)**



**Energy Audit Code  
(EAC)**



**Review once  
Every 3 years**

# BEC & EAC Review

2012

Enacted  
Buildings Energy  
Efficiency Ordinance

BEC & EAC 2012



2015

BEC & EAC  
2015



2018

BEC & EAC  
2018



2021

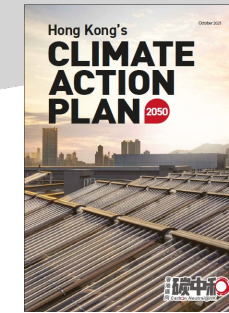
BEC & EAC  
2021



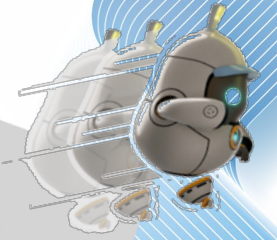
2024

BEC & EAC  
2024 Edition

4<sup>th</sup>  
Comprehensive  
Review



-- > 2050



~10% improvement

~18% improvement

~15% improvement

On-going improvement  
(BEC & EAC review by  
3-year interval)

Compare to  
BEC 2012

Compare to  
BEC 2015

# Thank You

