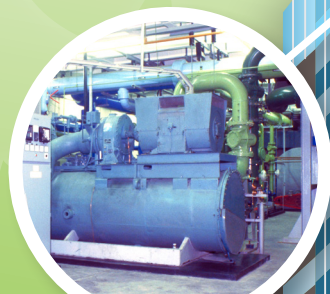


主要裝修工程

Major Retrofitting Works

《建築物能源效益條例》
已於2012年9月21日全面實施
The Buildings Energy
Efficiency Ordinance
came into full operation since
21 September 2012



空調裝置
Air-conditioning installation



電力裝置
Electrical installation



照明裝置
Lighting installation



升降機及自動梯裝置
Lift & escalator installation



《建築物能源效益條例》已於2012年9月21日全面實施。

所有「主要裝修工程」都要遵行《條例》有關的規定：訂明建築物（不論新建或現有建築物）的負責人（業主、租客或佔用人等等）在該建築物內的單位或公用地方完成「主要裝修工程」後的2個月內，須委聘「註冊能源效益評核人」核證所更換或加裝的屋宇裝備裝置符合最新版本的《建築物能源效益守則》，並向該

The Buildings Energy Efficiency Ordinance (BEEO) came into full operation on 21 September 2012.

All “major retrofitting works” must comply with the relevant requirements of the BEEO: The responsible person (i.e. owner, tenant or occupier etc.) of a unit or common area in a prescribed building (irrespective of newly constructed or existing one) is required to engage a Registered Energy Assessor to certify that the replaced or additional building services installations of “major retrofitting works” comply with the latest edition of the

備註

《建築物能源效益守則》自2012年起每三年作出檢討

Note

Building Energy Code is being reviewed every 3 years since 2012

「主要裝修工程」須符合《建築物能源效益守則》
"Major retrofitting works" are required to comply with the Building Energy Code



「註冊能源效益評核人」取得「遵行規定表格」。

同時，該「註冊能源效益評核人」須向機電工程署及物業管理公司呈交「遵行規定表格」的副本作記錄。

有關詳情，請參閱機電工程署建築物能源效益條例網頁：

<https://www.emsd.gov.hk/beeo/>

Building Energy Code and obtain a Form of Compliance (FOC) from that Registered Energy Assessor within 2 months after the completion of the works.

In the meanwhile, the Registered Energy Assessor is required to submit a copy of the FOC to the Electrical and Mechanical Services Department (EMSD) and the property management company for record.

For details, please visit the EMSD's BEEO webpage:-

<https://www.emsd.gov.hk/beeo/>

香港九龍啟成街3號機電工程署能源效益事務處
Energy Efficiency Office
Electrical and Mechanical Services Department
3 Kai Sing Street, Kowloon, Hong Kong

電話 Tel : 3757-6156 或 / or 1823 (電話中心 / Call Centre)
傳真 Fax : 2890-6081
網頁 Homepage : <http://www.emsd.gov.hk/beeo>
電郵 Email : mbec@emsd.gov.hk



再造紙印製
Printed on recycled paper

機電工程署  **EMSD**