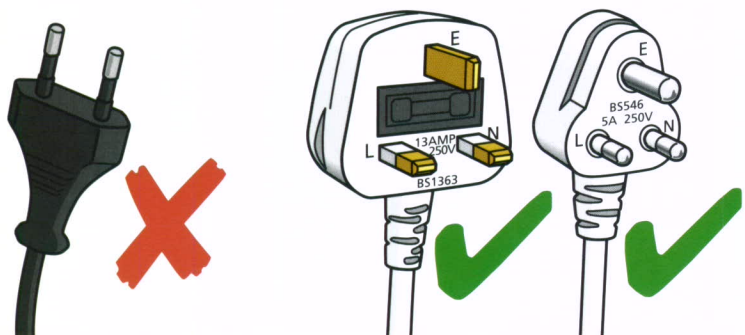


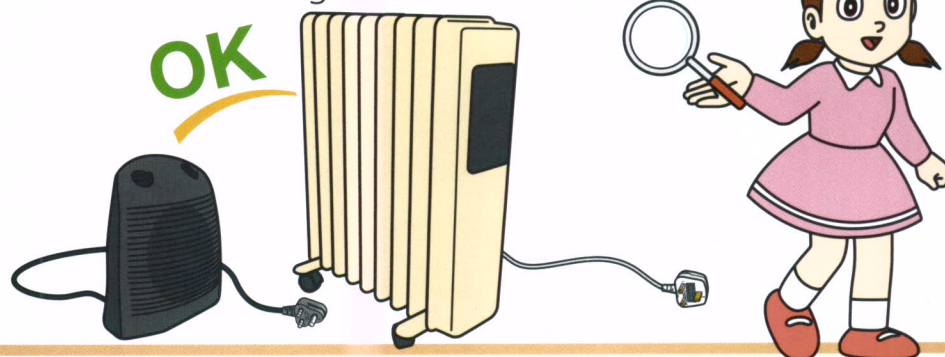
電暖爐安全須知

Safety Tips for Electric Heaters

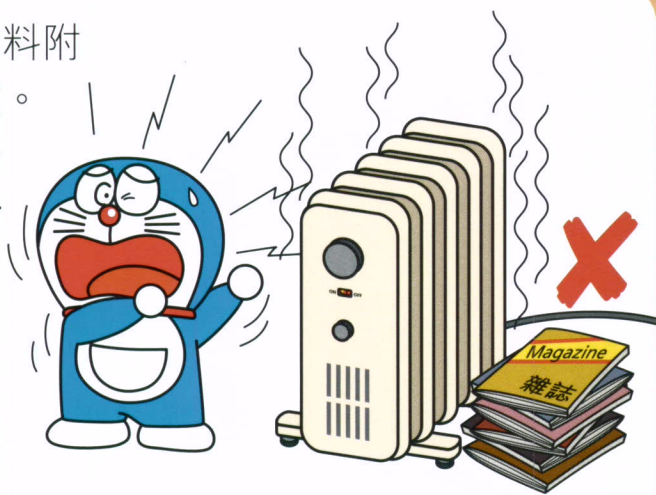
- 切勿使用裝有兩腳插頭的電暖爐。
Do not use an electric heater fitted with a 2-pin plug.



- 使用前，必須檢查是否有損壞。
Check for damage before use.



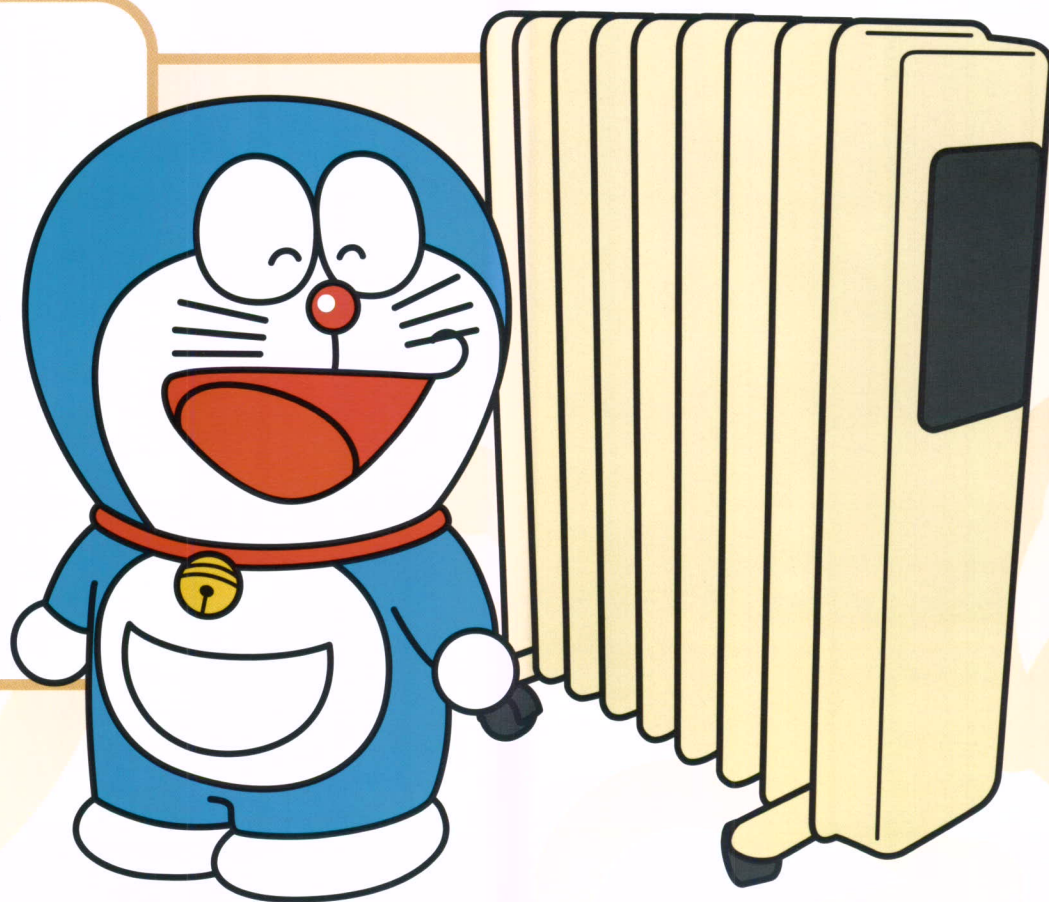
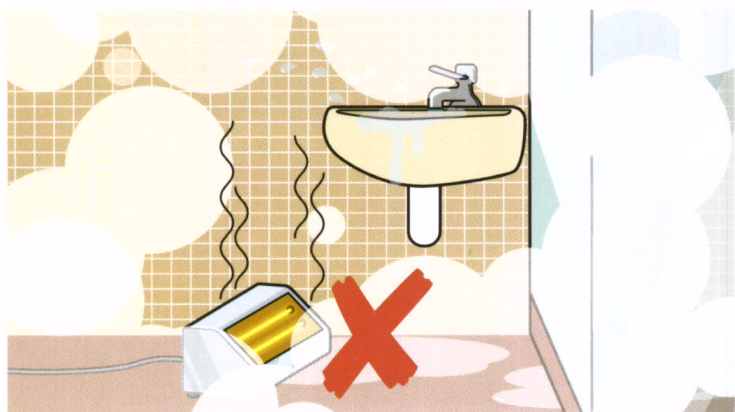
- 切勿於可燃物料附近使用電暖爐。
Do not use an electric heater near any combustible materials.



- 避免讓小孩接近電暖爐。
Keep children away from an electric heater.



- 避免在浴室內使用手提式電暖爐。
Avoid using portable electric heater inside a bathroom.



查詢 Enquiries

電話 Tel. : 1823
傳真 Fax : 2895 4929
網頁 Homepage : www.emsd.gov.hk