

Competent Person Written Report
**(Both passive and active detection
are completed)**

CP Signature :  _____

Name : John Chan

Approval No. : CP00000

Date : 20/9/2017

Directly Employed by : A Consultant Limited

Record No. : 266366EMSDTo : Foreman (Post) of B Company Limited (Name of site contractor or other working party)**Part A - Basic Information**I John Chan the Competent Person of underground electricity cable detectionApproval No.: CP00000 expiry date: 1/12/2017

in accordance with Electricity Supply Lines (Protection) Regulation,

from 2017 year 9 month 18 day 10 hour 0 minuteto 2017 year 9 month 20 day 15 hour 0 minuteat Opposite to Tai Wai Street Carpark, Tai Po, N.T.

undertook underground cable detection (both active and passive detection) and marked the cable alignment and depth on site.

Part B - Equipment used during underground cable detection

Receiver	Brand name: <u>C</u>	Serial No.: <u>456123</u>
	Model No.: <u>123</u>	Calibration record (Date): <u>15/8/2017</u>
Transmitter	Brand name: <u>C</u>	Serial No.: <u>123456</u>
	Model No.: <u>123a</u>	Calibration record (Date): <u>15/8/2017</u>
		Frequency: <u>8kHz, 11kHz & 33kHz</u>

Part C - Matters requiring particular attention

Having found that the quantity of exposed cable was not matched with the cable shown in the underground cable plan, we discussed this issue with the electricity supplier on 19.9.2017 and the result was as follow:

The electricity supplier confirmed that the location of the part of the cable shown in the cable plan had been altered.

The above mentioned underground cable detection was carried out with the assistance of Peter MA and he/she was directly supervised by me in the course of the detection.

CP signature: Date: 20/9/2017CP assistant signature: Date: 20/9/2017Name: (Peter MA)

Part D - Attachments

- | | | |
|---|--|-------------------------|
| 1 | Work Procedure | (Total <u>1</u> sheets) |
| 2 | Measurement record | (Total <u>1</u> sheets) |
| 3 | Underground Cable Alignment Layout Plan by Active Detection | (Total <u>1</u> sheets) |
| 4 | Photos showing toroidal active detection and site markings for cable alignment and depth | (Total <u>6</u> Nos.) |
| 5 | Electricity supplier's advice, such as advice sought from the electricity supplier upon detecting major deviations of cable alignment on site from electricity supplier's cable plans (if any) | (Total <u>1</u> sheets) |
| 6 | Electricity supplier's cable plans | (Total <u>1</u> sheets) |
| 7 | Site briefing | (Total <u>1</u> sheets) |
| 8 | Others: _____ | (Total <u>1</u> sheets) |

CP Written Report
Work Procedure

Record No. : 266366EMSD Page: 3

Working Place : Opposite to Tai Wai Street Carpark, Tai Po, N.T.

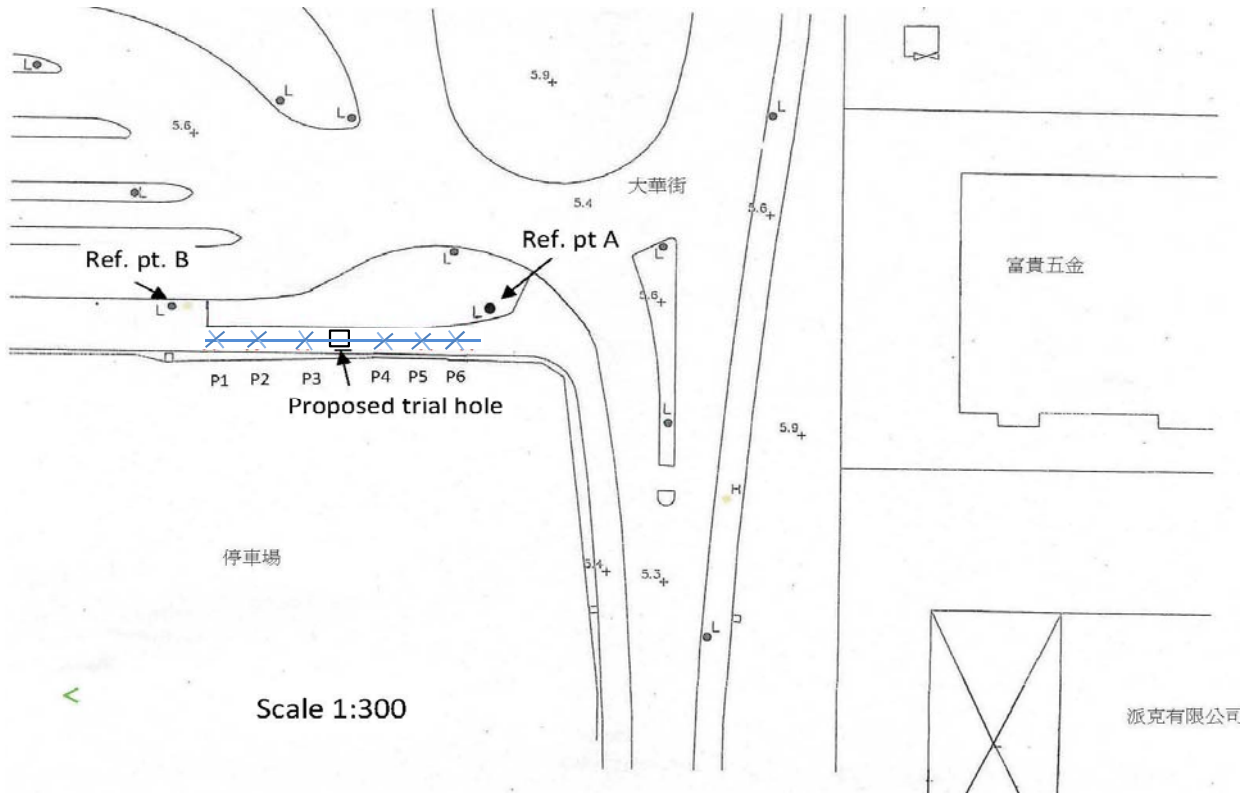
Nature of Work : Trench work

Date / Time	Cable Detection Work Procedure	Relevant Photo No.
18/9/2017 at 10:30	Having obtained the location plan of the construction site and the corresponding underground cable plan, passive detection was being planned to carry out.	
18/9/2017 at 11:00	Passive detection was carried out.	Photo 1 and Photo 2
19/9/2017 at 10:00	Supervision of trial holes excavation until the target cable was exposed.	
19/9/2017 at 12:00	Having found that the quantity of exposed cable was not matched with the cable shown in the underground cable plan, we liased with CLP.	
19/9/2017 at 13:00	Having liased with CLP, CLP confirmed the above cable location had been altered. Therefore, the quantity of the exposed cable was correct.	
20/9/2017 at 10:00	Carried out torodial active detection to identify the alignment & depth of the un-exposed underground cable	Photo 3
20/9/2017 at 11:00	Marked the cable alignment & depth on site & took photos for record purpose	Photo 4, photo 5 and Photo 6
20/9/2017 at 11:30	Measured and recorded the distance between the detedtion point & the refernce point A & B	
20/9/2017 at 13:30	Submission of competent person writtten report to the working party	
20/9/2017 at 14:30	The working party arranged site briefing given by the competent person to ensure that the site personnel were conversant with the contents of the report and the site personnel was requested to sign for record purpose.	

CP Written Report Underground Cable Layout Plan

Record No. : 266366EMSD

Page: 5



Legend:

(For reference only)

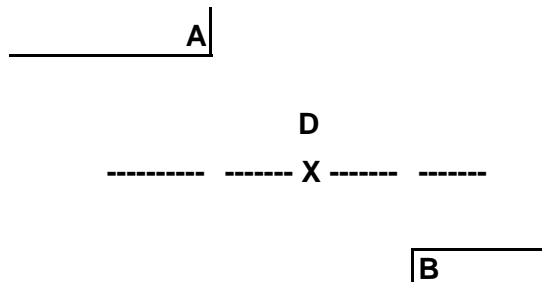
X : Measurement Point

D : Cable Depth (mm)

----: Cable Alignment

A : Reference Point A

B : Reference Point B



Remarks : The cable layout plan should include all the relevant details to clearly indicate the cable location such as site area, cable alignment, reference point, sequence number of detection points, cable depth, cable quantity, cable voltage level, trial hole location, kerb, building line, manhole, etc.

Ratio 1 : 300

CP Written Report
Photos for Active Detection

Record No. :266366EMSD

Page : 6

Photo 1 (Passive detection was carried out)



Photo 2 (Cable detection area)



Photo 3 (Carried out torodial active detection)



Photo 4 (Marked the cable alignment & depth on site)



Photo 5 (Marked the cable alignment & depth on site)



Photo 6 (recorded Marked the cable alignment & depth)



CP Written Report

Record No.: 266366EMSD

Page: 7

Electricity supplier's advice, such as advice sought from the electricity supplier upon detecting major deviations of cable alignment on site from electricity supplier's cable plans (if any)

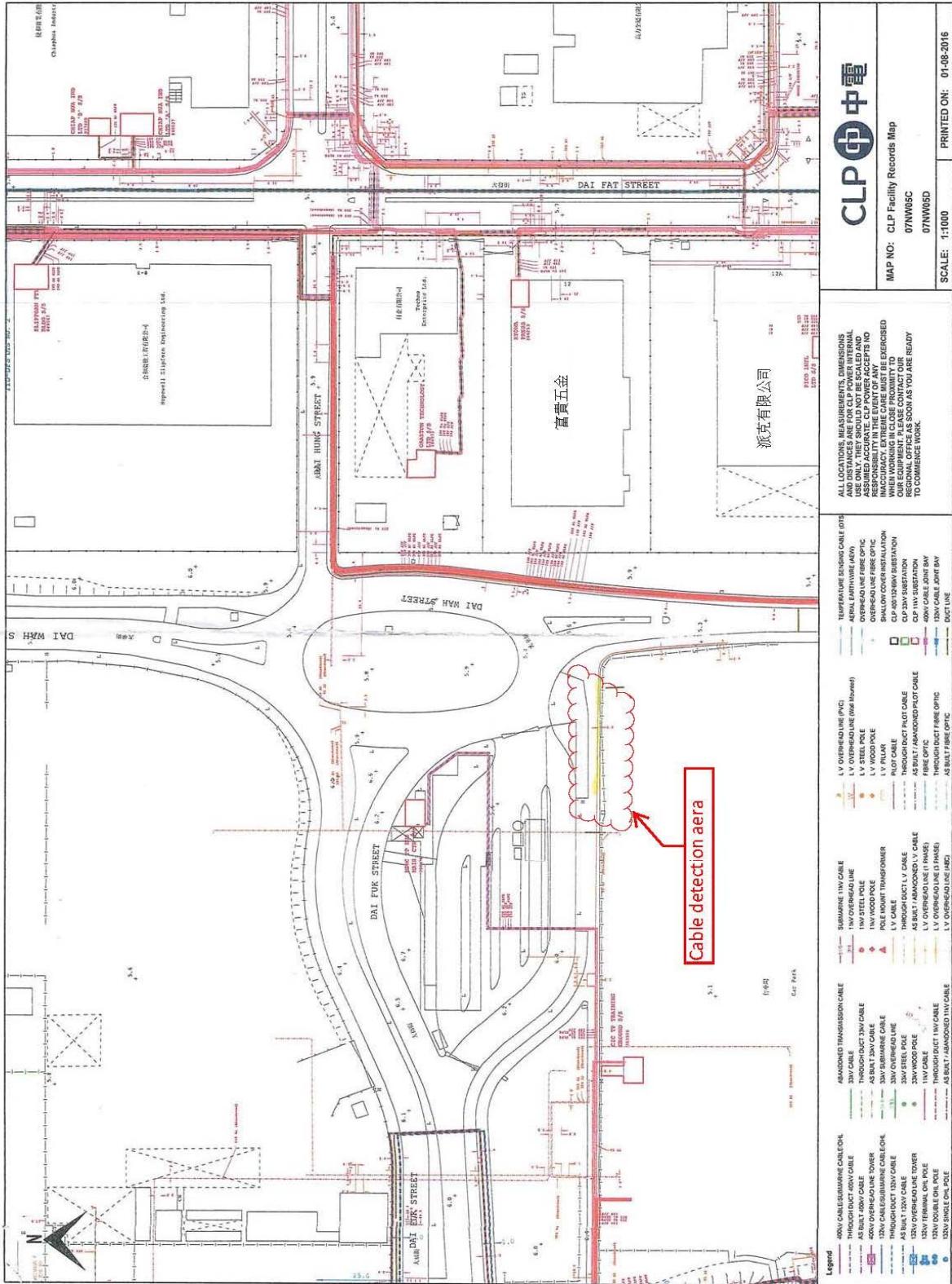
The working party has requested cable plans from the electricity supplier on 1 August 2017 and has received the cable plans from the electricity supplier on 10 August 2017.

Having found that the quantity of exposed cable was not matched with the cable shown in the underground cable plan, we discussed this issue with the electricity supplier on 19.9.2017 and the result was as follow:
The electricity supplier confirmed that the location of the part of the cable shown in the cable plan had been altered.

CP Written Report Cable Layout plan of Electricity Supplier

Record No.: 266366EMSD

Page: 8



CLP 中電

MAP NO: CLP Facility Records Map
07NW05C
07NW05D

SCALE: 1:1000 PRINTED ON: 01-06-2016

Map data reproduced with permission of the Director of Lands, (C) Hong Kong.
Reproduction in any form must be approved by CLP Power.

ALL LOCATIONS, MEASUREMENTS, DIMENSIONS AND DIMENSIONS OF CABLES AND EQUIPMENT SHOWN ON THIS MAP ARE FOR INFORMATION ONLY. THEY SHOULD NOT BE SCALED AND ASSUMED ACCURATE. CLP POWER ACCEPTS NO LIABILITY FOR ANY ERRORS OR OMISSIONS OR INACCURACY. EXTREME CARE MUST BE EXERCISED WHEN WORKING IN CLOSE PROXIMITY TO OVERHEAD AND UNDERGROUND CABLES. CLP POWER OFFICES AS SOON AS YOU ARE READY TO COMMENCE WORK.

Legend	AMANDATED TRANSMISSION CABLE	SUBMERGED 11KV CABLE	TEMPERATURE SENSING CABLE (TSC)
400V CABLE/STRIPPING CABLE ON THROUGH DUCT 400V CABLE	33KV CABLE	11KV OVERHEAD LINE	SEMI EARTHED (AEW)
110KV CABLE	AS BUILT 33KV CABLE	11KV OVERHEAD LINE (over tower)	OVERHEAD LINE FIBRE OPTIC
110KV OVERHEAD LINE TOWER	33KV STRIPPING CABLE	11KV WOOD POLE	SHALLOW INSTALLATION
120V CABLE/STRIPPING CABLE ON THROUGH DUCT 120V CABLE	33KV OVERHEAD LINE	POLE MOUNT TRANSFORMER	CLP 100/120KV SUBSTATION
AS BUILT 120V CABLE	33KV STEEL POLE	L.V. CABLE	CLP 33KV SUBSTATION
120V STRIPPING CABLE ON THROUGH DUCT 120V CABLE	33KV WOOD POLE	THROUGH DUCT L.V. CABLE	CLP 110V SUBSTATION
120V DOUBLE OIL POLE	AS BUILT/AMANDATED L.V. CABLE	AS BUILT/AMANDATED THROUGH DUCT CABLE	120V CABLE JOINT BOX
120V SINGLE OIL POLE	THROUGH DUCT 110V CABLE	AS BUILT/AMANDATED THROUGH DUCT FIBRE OPTIC	DUCT LINE
	AS BUILT/AMANDATED 110V CABLE	AS BUILT/AMANDATED THROUGH DUCT FIBRE OPTIC	

Reference no.: N-2016-1203-001

CP Written report


Record No.: 266366EMSD


Page: 9


Site Briefing

I have briefed the content of the Competent Person Written Report to the following site personnel, such as the operators of excavator/machine and workers engaged in excavation work, including the meaning of site markings, potential danger as a result of cable damage and the required safety precautions, and other details of this report.

- 1 Signature :  Date : 20/9/2017
Name/ Post : (**Jasper POON** / **Site agent**)

- 2 Signature :  Date : 20/9/2017
Name/ Post : (**Kenneth MAK** / **Foreman**)

- 3 Signature :  Date : 20/9/2017
Name/ Post : (**David CHEUNG** / **Operator**)

- 4 Signature :  Date : 20/9/2017
Name/ Post : (**Johnson KWOK** / **Worker**)