

Cable Alignment Record

**(Only passive detection is completed
and active detection has not been
carried out)**

CP Signature : _____

Name : _____

Registration No. : _____

Date : _____

(Nov 2018)

Directly Employed by : (Contractor Name)/
(Self-employed)

Record No. : _____

To : _____ (Post) of _____ (Name of site contractor or other working party)

Part A - Basic Information

I _____ the Competent Person of underground electricity cable detection

Approval No.: _____ expiry date: _____

in accordance with Electricity Supply Lines (Protection) Regulation,

from _____ year _____ month _____ day _____ hour _____ minute

to _____ year _____ month _____ day _____ hour _____ minute

at _____

undertook underground cable detection (passive detection only) and marked the cable alignment and depth on site.

Part B - Equipment used during underground cable detection

Receiver	Brand name: _____	Serial No.: _____
	Model No.: _____	Calibration record (Date) _____

Part C - Matters requiring particular attention

Underground cable detection is not completed yet, working party is required to arrange Competent Person to conduct active cable detection before commencement of work.

For example: major discrepancies between cable detection results and the electricity supplier's cable plans/ cable is found to be in shallow depth and has discussed the issue with the electricity supplier on _____ and the result is as follow:

The above mentioned underground cable detection was carried out with the assistance of _____ and he/ she was directly supervised by me in the course of the detection.

CP signature: _____ Date: _____

CP assistant signature: _____ Date: _____
Name: (_____)

Part D - Attachments

- | | | |
|---|--|--------------------|
| 1 | Work Procedure | (Total_____sheets) |
| 2 | Measurement record | (Total_____sheets) |
| 3 | Cable Alignmnet Layout Plan of Underground Cables
Detected by Passive Detection | (Total_____sheets) |
| 4 | Photos showing proposed trial hole locations and site markings for cable
alignment and depth | (Total_____nos.) |
| 5 | Electricity supplier's advice, such as advice sought from the electricity
supplier upon detecting major deviations of cable alignment on site from
electricity supplier's cable plans (if any) | (Total_____sheets) |
| 6 | Electricity supplier's cable plans | (Total_____nos.) |
| 7 | Site briefing | (Total_____sheets) |
| 8 | Others: _____ | (Total_____sheets) |

<u>Cable Alignment Record</u> <u>Work Procedure</u>	
Record No. : _____	Page : _____
Working Place : _____	
Nature of Work : _____	

[illegible][illegible][illegible][illegible]

Cable Alignment Record
Measurement Record

Record No. : _____

Page: _____

Cable No. _____

_____ no. control signal cable
 Voltage: _____ no. 380/220V _____ no. 132kV
 _____ no. 11kV _____ no. 275kV
 Cable
 Quantity: _____ no. 22kV _____ no. 400kV

[illegible]

^ depth measurement from passive detection is not accurate and the figure is for reference only

Cable Alignment Record
Layout Plan of Underground Cables

Record No. : _____

Page: _____

Legend:

(For reference only)

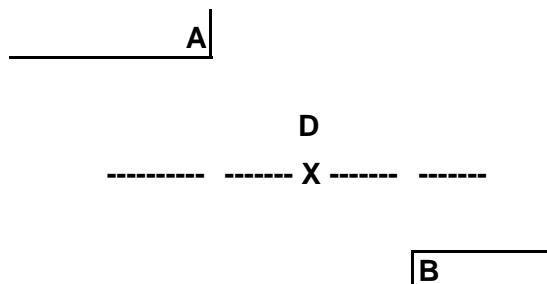
X : Measurement Point

D : Cable Depth (mm)

----: Cable Alignment

A : Reference Point A

B : Reference Point B



Remarks : The cable layout plan should include all the relevant details to clearly indicate the cable location such as site area, cable alignment, reference point, sequence number of detection points, cable depth, cable quantity, cable voltage level, proposed trial hole location, kerb, building line, manhole, etc.

Ratio 1 :

Cable Alignment Record

Record No. :

Page:

Electricity supplier's advice, such as advice sought from the electricity supplier upon detecting major deviations of cable alignment on site from electricity supplier's cable plans (if any)

The working party has requested cable plans from the electricity supplier on _____ and has received the cable plans from the electricity supplier on _____.

Cable Alignment Record

Record No. : _____

Page: _____

Site Briefing

I have briefed the content of the Cable Alignment Record to the following site personnel, such as operators of excavator/machine and workers engaged in the excavation work, in particular the proposed trial hole location(s) and the number of target underground cables to be exposed, and other details of this record.

1 Signature : _____ Date : _____
Name/ Post : (_____ / _____)

2 Signature : _____ Date : _____
Name/ Post : (_____ / _____)

3 Signature : _____ Date : _____
Name/ Post : (_____ / _____)

4 Signature : _____ Date : _____
Name/ Post : (_____ / _____)