



## Airport Authority (Automated People Mover) (Safety) Regulation (Cap. 483C)

Enacted in 1998, the above regulation aims to regulate the safe operation of the Automated People Mover (APM) system at the Hong Kong International Airport.

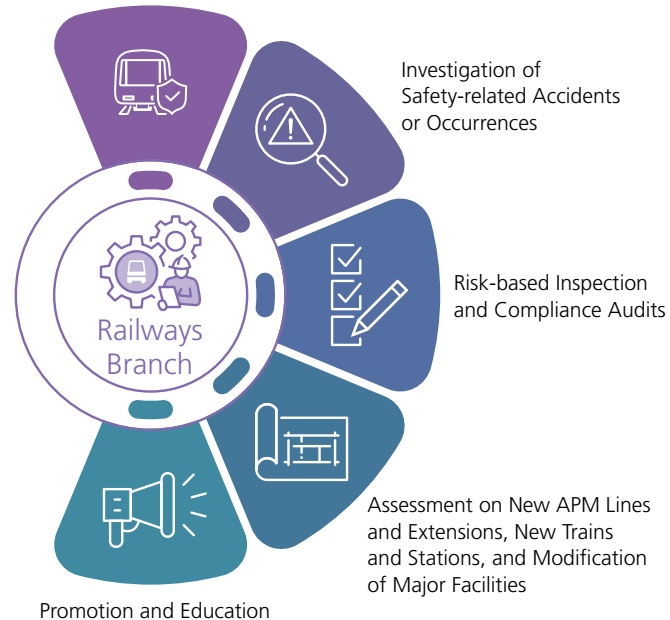
## Key Roles of Railways Branch (RB)

The RB of the Electrical and Mechanical Services Department (EMSD), which was established in February 2008, is the regulatory authority of railway safety in Hong Kong. One of its key roles is to regulate and oversee the safe operation of the APM system under a regulatory framework stipulated in the above regulation.

## Regulatory Approach

The RB oversees the safe operation of the APM system under the regulatory framework and adopts a risk-based approach in monitoring the APM safety.

Confirmation of the Adoption and Adherence to Appropriate Safety Practices of the Airport Authority Hong Kong (AAHK)



# Regulatory Regime for Automated People Mover (APM) Safety

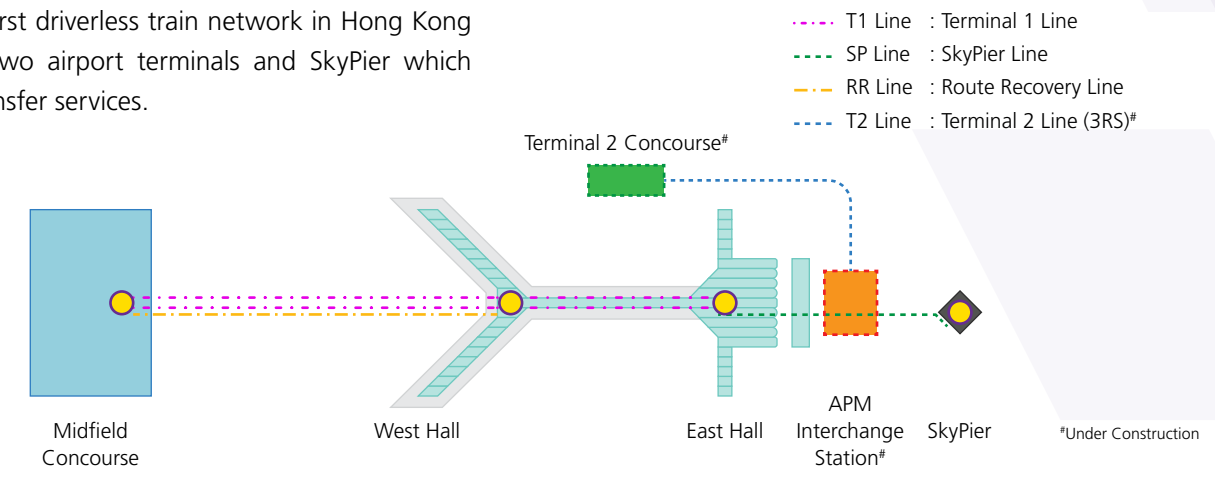


www.emsd.gov.hk



## APM Network in Hong Kong

The APM is the first driverless train network in Hong Kong connecting the two airport terminals and SkyPier which provides ferry transfer services.



 No. of Stations: <b>4</b>	 Fleet size: <b>56 cars</b>
 Route Length: about <b>4.7 km</b>	 Speed: about <b>60 km/hour</b>
 Capacity: <b>260</b> passengers / 4-car train	

\* Figures as at the end of 2021

## Stakeholders

Passenger safety is the core focus of the regulatory regime of the APM system. Collaboration between the RB and the stakeholders is essential to maintaining the safe operation of the APM system.

