



Regulatory Regime for Mass Transit Railway Safety

Mass Transit Railway Ordinance (Cap. 556) and Mass Transit Railway Regulations (Cap. 556A)

The above ordinance and regulations aim to control and regulate the operation and maintenance of the Mass Transit Railway (MTR), including all aspects of safety on the MTR.

Key Roles of Railways Branch (RB)

The RB of the Electrical and Mechanical Services Department (EMSD), which was established in February 2008, is the regulatory authority of railway safety in Hong Kong. One of its key roles is to regulate and oversee the safe operation of the MTR system under a regulatory framework stipulated in the above ordinance and regulations.

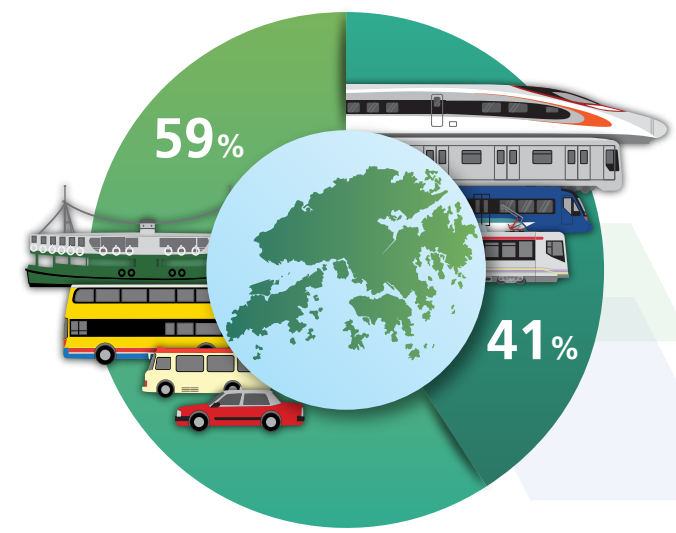
Regulatory Approach

Being the regulatory authority of railway safety, the RB has a range of regulatory functions over the railway operator, the MTR Corporation Limited (MTRCL), and adopts a risk-based approach in monitoring railway safety.

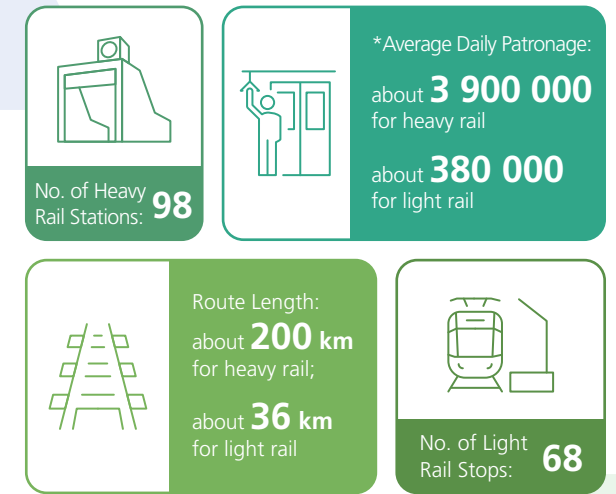
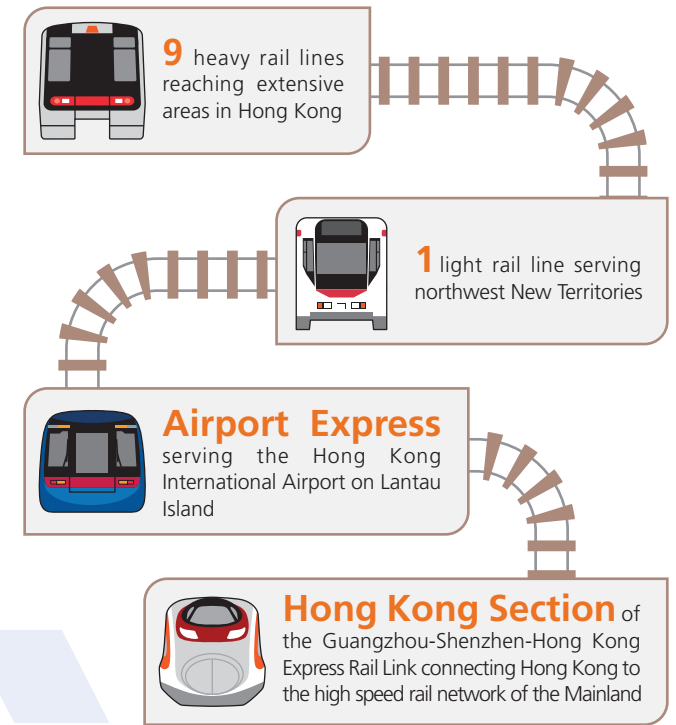


Public Transportation in Hong Kong

Railways account for about **41** per cent of local public transport by the end of 2021.



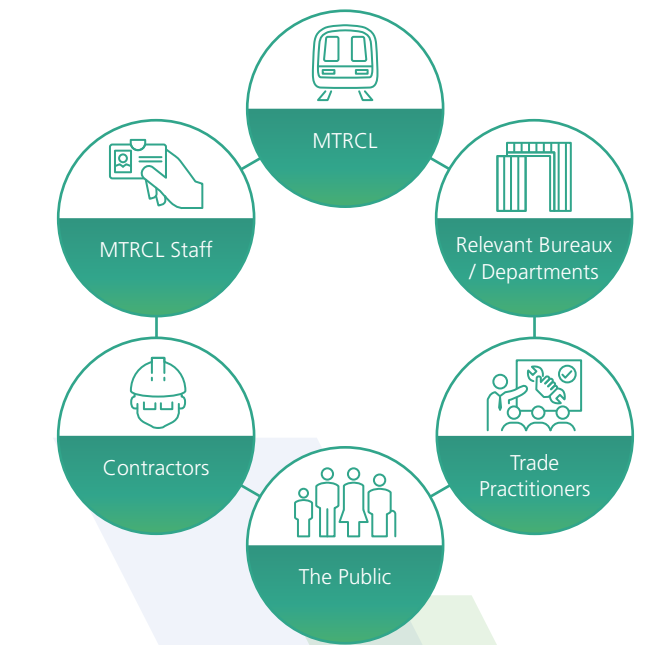
Railway Network in Hong Kong



* Figures as at the end of 2021(excluding High Speed Rail)

Stakeholders

Railway safety concerns every passenger of the railway network and remains the core focus of the regulatory regime. Collaboration between the RB and the stakeholders is essential to maintaining railway safety.



www.emsd.gov.hk

