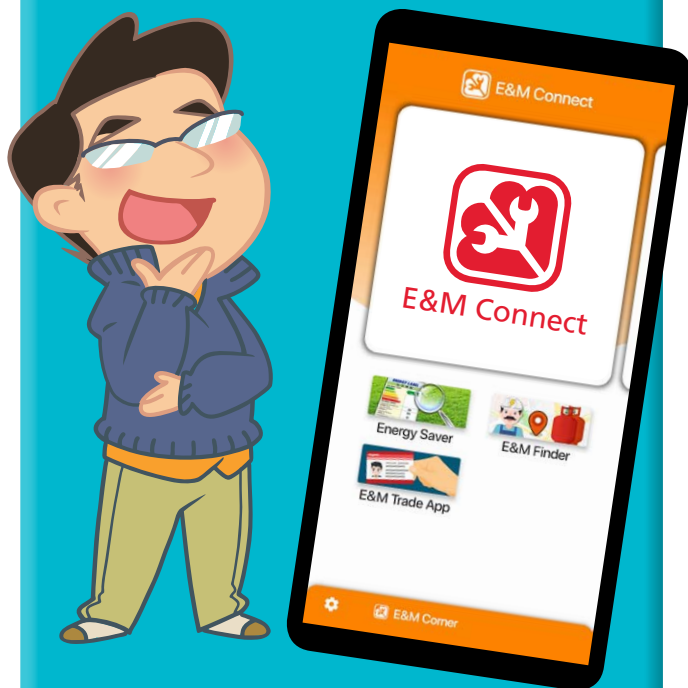


EMSD Mobile Apps



Little Things Matter, Be Careful When Riding Escalators



GU Mark – a Symbol of Safe and Reliable Gas Appliances



Electrical Products Safety Corner



Mandatory Energy Efficiency Labelling Scheme

ENERGY LABEL 能源標籤			
more efficient 節能較高		Cooling 製冷	Heating 供暖
1		Class 1	Class 1
2			
3			
4			
5			
less efficient 節能較低			
Annual Energy Consumption (kWh/year) 全年耗電量 (kWh/年)		420	150
Cooling and Heating Capacity (kW) 製冷及供暖量 (kW)		2.54	2.48
Refrigerant 制冷剂		R410A	
Room Air Conditioner (Brand)		A/C (品牌)	
Model 型號		A/C (型號)	
Reference Number / Year 參考編號 / 年		01-CH2023 (2018)	
Information Provider 資料提供者		EMSD	



EMSD Mobile Apps



The Electrical and Mechanical Services Department (the EMSD) launched two free mobile applications (apps) in late 2019, which enable users to obtain latest information about the E&M trade and enjoy the convenience of electronic services anytime, anywhere with their smart phones, making life easier for them. Now, let's take a look at the functions of these two mobile apps.

1. E&M Connect

The interactive interface of this app is composed of clear icons. After opening the app, users can browse promotional messages, event information and service arrangements of the EMSD via the homepage banner. Users can also tap on "E&M Corner" to obtain the information about the E&M trade released by the EMSD. Of course, what must be mentioned is the two major functions offered by the app as follows:

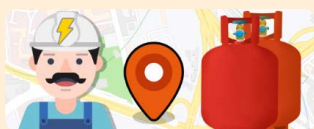
Energy Saver

By capturing the image of the energy labels on the household electrical products with the camera on users' mobile phones, coupled with the optical character recognition feature, the app can instantly show and compare the energy performance and estimated annual electricity charges of different household electrical product models, facilitating the selection of more energy-saving products by users. In addition to saving money on electricity bills, Energy Saver also helps reduce carbon emissions, enabling users to play a part in environmental protection.



E&M Finder

With current location or specified location function on smart phones, users can instantly search on Google Maps for registered electrical contractors and LPG cylinder distributors (shown with icons of gold, silver and



bronze ratings under the LPG Cylinder Distributor Safety Performance Recognition Scheme) nearby. The app helps users obtain the contact information of distributors with good safety performance at their fingertips, facilitating them in arranging the required services.

2. E&M Trade App

The E&M Trade App is specially designed for registered E&M practitioners. By tapping on the app icon, users can browse such information as training course materials, safety tips, codes of practice and other related documents issued by the EMSD. Users can also go through a simple process to sign up as registered users so as to enrol for Continuing Professional Development (CPD) courses directly via the app, record the number of CPD hours and receive reminders on registration expiry.



Act now and join us to enjoy our brand-new services!

E&M Connect



Android



iOS

E&M Trade App



Android



iOS

Little Things Matter, Be Careful When Riding Escalators



Escalator is an indispensable means of transport. To ensure escalator safety, appropriate maintenance and periodic inspection are essential, but proper use of escalators by passengers is equally important. Last year, the EMSD received reports of a total of 1 771 escalator incidents, of which 96% were related to passenger behaviours, including losing balance and falling while walking on escalators. This shows that proper use of escalators is indeed worthy of attention. So what exactly is the correct way to use escalators? In particular, should passengers walk on escalators? Is “standing still” safe enough?

Members of the public have been holding different views on this issue. Some people think that, given the rapid pace of life in Hong Kong, the practice of “walking on the left and standing on the right” can make room for people who are in a hurry to keep moving on escalators. On the other hand, some support putting safety first. For their own safety and the safety of other passengers, they always “stand still”, stand firm and hold the handrail tightly when travelling on escalators. They never walk on escalators as this may cause accidents.

As the rise of escalator steps is generally higher than that of staircase steps and it changes during escalator

operation, passengers are more prone to slip and trip when walking on escalators, thus causing accidents. On the other hand, passengers walking on escalators tend not to hold the handrail tightly because they are walking. If the escalators stop suddenly in case of emergency, they will be prone not only to fall by loss of balance but also to bump into other passengers, thus causing more serious incidents. Therefore, the EMSD recommends that when using escalators, **passengers should hold the handrail tightly, stand on either side of escalator steps, exercise due vigilance, and refrain from giving undivided attention to mobile phones.**

To further promote safe use of escalators, the EMSD also launched a new series of Announcements in the Public Interest (APIs) on TV and radio and posters in March 2020, encouraging passengers to “stand on either side and hold the handrail” and reminding them of the points to note when travelling on escalators. The TV APIs can be viewed on the EMSD YouTube channel.

<https://www.youtube.com/watch?v=B9cNPi2aQ24>



New promotional posters launched by the EMSD in 2020

GU Mark – a Symbol of Safe and Reliable Gas Appliances



In accordance with regulation 3B of the Gas Safety (Miscellaneous) Regulations (Cap. 51F), starting from 1 January 2003, all types of domestic gas appliances which are imported, sold or supplied for use in Hong Kong shall be approved in writing by the Gas Authority (i.e. Director of Electrical and Mechanical Services), and the approved gas appliances shall bear a GU mark for easy identification by the trade and customers.

In Hong Kong, the scope of the GU mark covers all domestic gas appliances (i.e. gas appliances which are designed, or intended, to be used primarily in domestic premises, irrespective of whether they are so used), such as cookers, water heaters and gas clothes dryers, etc. Gas appliances bearing a GU mark are designed and manufactured in accordance with recognised international/national safety standards and are subject to local quality assurance checks in Hong Kong laboratories to ensure compliance with safety and quality standards.

The legislation relating to the GU mark has been implemented for more than 17 years. Gas appliances installed before the legislation came into force are ageing and have already exceeded their average life expectancy.

Besides, appliance suppliers may no longer have spare parts for replacement. For the sake of safety, members of the public should consider replacing such gas appliances with ones bearing a GU mark.

In addition to purchasing and using gas appliances bearing the GU mark, users should also arrange a registered gas installer employed by a registered gas contractor to conduct a regular safety inspection on the domestic gas installations every 18 months to ensure their proper operation. If you smell gas or suspect a gas leak, you should immediately extinguish all fires and open all doors and windows to disperse the gas. If circumstances permit, you should turn off the main gas supply valve and then leave the scene as soon as possible. You should also call 999 to notify the Fire Services Department and contact the gas supply company to come to the scene to handle the incident. Members of the public are reminded not to bring in gas appliances or import non-approved gas appliances for use in Hong Kong. Any person who fails to comply with the relevant requirements commits an offence, and is liable on conviction to a maximum penalty of a fine at level 6 (\$100,000) and imprisonment for one year.

Electrical Products Safety Corner

Safety Tips for Household Electrical Products



Electric Fan



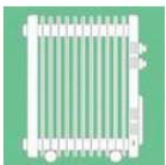
Air-Conditioner



Dehumidifier



Washing Machine



Electric Heater



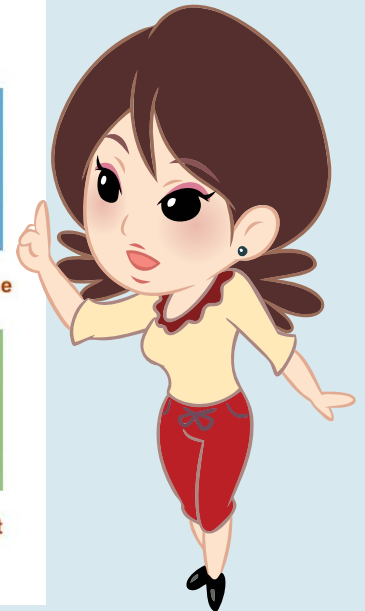
Electric Water Heater



Induction Cooker



Electric Blanket



The EMSD has recently launched a thematic web page entitled "Electrical Products Safety Corner" on its website, providing the latest safety information for reference by members of the public and the trade. The web page features:

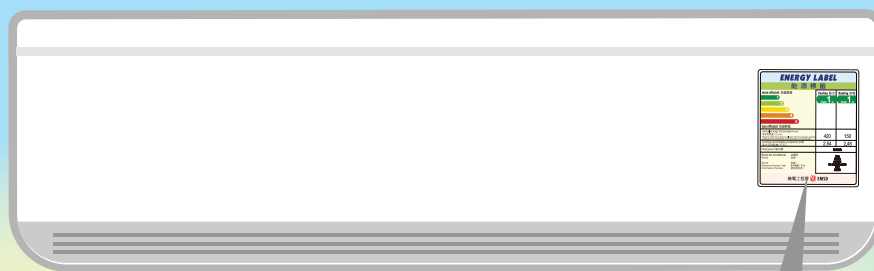
- (1) Safety tips on various types of common household electrical products (such as dehumidifiers, washing machines and induction cookers);
- (2) Publicity posters and pamphlets for assisting the public to choose, properly use and maintain electrical products;
- (3) Guidance notes and technical guidelines related to the safety of electrical products, e.g. the latest version of the Guidance Notes for the Electrical Products (Safety) Regulation (2019 Edition);
- (4) The forms used for electrical product safety to which the trade will frequently make reference;
- (5) To facilitate the suppliers contacting with the recognized certification bodies (RCB) for obtaining the certificates of safety compliance, a list of RCB for electrical products is provided; and
- (6) Publication such as Electricity News which disseminates the latest information to the trade.

To view the web page, please scan the QR code below.

https://www.emsd.gov.hk/en/electricity_safety/electrical_products_safety_corner/index.html



Mandatory Energy Efficiency Labelling Scheme



ENERGY LABEL 能源標籤		
more efficient 效益較高	Cooling 製冷	Heating 供暖
1	Grade 1 級	Grade 1 級
2		
3		
4		
5		
less efficient 效益較低		
Annual Energy Consumption (kWh) 每年耗電量 (千瓦小時) <small>Based on 1200 hrs/yr operation (Cooling) or 240 hrs/yr operation (Heating) 以每年使用 1200 小時計算 (製冷) 或以每年使用 240 小時計算 (供暖)</small>	420	150
Cooling and Heating Capacity (kW) 製冷及供暖量 (千瓦)	2.54	2.48
Refrigerant 製冷劑	R410A	
Room Air Conditioner Brand 品牌:	ABC 某某牌	
Model 型號:	HK1234	
Reference Number / Year 參考編號 / 年份:	U1-C180123 / 2018	
Information Provider 資料提供者:	XYZ 某某某	
機電工程署 EMSD		

The Mandatory Energy Efficiency Labelling Scheme (MEELS) not only facilitates the public in choosing energy efficient electrical products, but also encourages manufacturers to enhance the energy efficiency performance of electrical products, so as to reduce carbon emissions in Hong Kong. The energy labels under MEELS are classified into five grades, with Grade 1 (green) as the most energy efficient and Grade 5 (red) the least. By making reference to the information on the energy labels, members of the public can compare the energy efficiency and performance characteristics of similar electrical products, and then choose the most suitable one.

To find out which one of the electrical products of the same energy efficiency grade is more energy saving, you may compare the annual energy consumption figures on the energy labels. The smaller the figure, the lower the energy consumption. Such information is provided on the energy labels of room air conditioners, refrigerating appliances (refrigerators), washing machines, dehumidifiers and televisions for reference.

Take two models of reverse cycle type room air conditioners with Grade 1 energy label as an example, one with annual energy consumption (cooling) of 420 kWh and annual energy consumption (heating) of 150 kWh (as shown in the figure above) while the other with annual energy consumption (cooling) of 500 kWh and annual energy consumption (heating) of 180 kWh. If you choose the former, you can save about 110 kWh (around 16%) of energy consumption per year, which is equivalent to an annual saving of \$132 assuming the electricity tariff is \$1.2 per kWh.

For more information about MEELS, please visit the Energy Label Net at www.emsd.gov.hk/energylabel/.



E & M Safety Quiz

Please fill in the reply slip below with **the most appropriate answer** for each question and send it by post or by fax to the Editor, E&M Safety Newsletter (contact information is shown at the bottom of this page). The first 500^[1] of the quiz participants answering all questions correctly will receive a souvenir (on a first-come-first-served basis).

- Which of the following functions is provided by the EMSD mobile apps?**
 - Compare the energy performance of different household electrical product models
 - Search for registered electrical contractors and LPG cylinder distributors nearby
 - Enrol for training courses offered by the EMSD
 - All of the above
- Which of the following is a safe behaviour when using escalators?**
 - Stand firm and hold the handrail tightly
 - Travel on the escalator with bulky items
 - Keep one's eyes only on the mobile phone
 - Walk on escalators
- For how many years has the legislation relating to the GU mark been implemented?**
 - 15 years
 - 17 years
 - 19 years
 - 20 years
- Which of the following safety information is available in the Electrical Products Safety Corner?**
 - Safety tips on common household electrical products
 - Technical guidelines related to the safety of electrical products
 - Publicity posters and pamphlets on proper use and maintenance of electrical products
 - All of the above
- Which of the following types of electrical products is not covered under the Mandatory Energy Efficiency Labelling Scheme?**
 - Room air conditioner
 - Washing machine
 - Television
 - Microwave oven

REPLY SLIP ^[2]				
Name:			Tel.:	
Hong Kong Address:				
Answers:				
Q1	Q2	Q3	Q4	Q5
Where did you get this E&M Safety Newsletter?				
Residential estate	School	District Office	Community centre	
Others (please specify):				

[1] Only the first 500 of the quiz participants sending in the Reply Slip with all answers correct will be notified.

[2] The personal data provided in the Reply Slip will only be used for the E & M Safety Quiz purpose. It will be kept confidential and will not be disclosed to any third party. You have the right to request in writing to check whether EMSD is keeping your personal data, to access or correct it, and to enquire about our policy and procedures in the use of such data as well as the types of personal data we are keeping. The above terms do not affect your rights as set out in the Personal Data (Privacy) Ordinance.

Answers to last issue's quiz: 1. B 2. A 3. D 4. D 5. D

Feedback

Your comments and suggestions, whether on editorial style or contents, are most welcome. Tell us how we can improve and make the E & M Safety Newsletter a truly informative and interesting publication for you. Please contact us if you have any comments or enquiries, or need a printed copy. Both the English and Chinese versions of the E&M Safety Newsletter are available on our website at <http://www.emsd.gov.hk>.

The Editor, E&M Safety Newsletter
Electrical and Mechanical Services Department
3 Kai Shing Street, Kowloon Bay

Tel. 電話: 1823 (電話中心 Call Centre)
Fax 傳真: 2504 5970
Email 電郵: info@emsd.gov.hk

歡迎讀者就版面或內容提出寶貴意見及建議，使我們能作出改善，務求為大家提供更多有用和有趣的資料。如欲提出意見、查詢或索取《機電與我》，請與我們聯絡。《機電與我》中文及英文版均可於我們的網頁 (<http://www.emsd.gov.hk>) 內瀏覽。

九龍灣啟成街3號
機電工程署《機電與我》編輯



機電工程署
EMSD

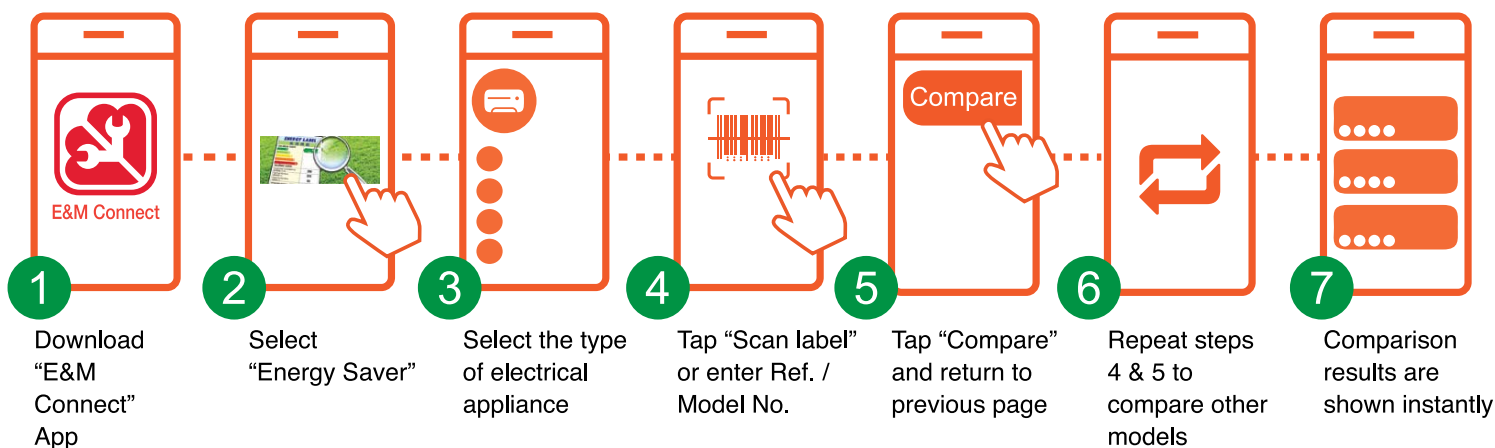


Annual Electricity Charge in One Scan!



How to use:

Download and watch video
E&M Connect



Disclaimer:
According to the latest "Code of Practice on Energy Labelling of Products",
annual energy consumption of each product model is calculated based on
average hours/days/times/standby loss hours per year operation of each product type.

For enquiries, please e-mail info@emsd.gov.hk.