

Points to Note

Before commencement of works, take all reasonable steps including:

- (1) Obtain information and plans of the underground electricity cables/gas pipes from the electricity supplier / gas supply company;
- (2) Appoint a competent person (approved by the Director of Electrical and Mechanical Services under the Electricity Ordinance (Cap. 406)) to identify the alignment and depth of underground electricity cables / gas pipes; the contractor and/or person who actually carries out the works is responsible for ensuring where electricity cables / gas pipes are located before works begin;
- (3) For locating the underground electricity cables, it is required to carry out passive cable detection and identify trial hole locations. Trial holes should be dug under the supervision of a competent person to expose the target underground electricity cables. Thereafter, carry out toroidal active cable detection to ascertain the position of the unexposed underground electricity cables. After that, provide site personnel with the "Competent Person Written Report" and arrange site briefing to explain the contents of the Report and the safety precautions to site personnel;
- (4) For locating underground gas pipes, contractor must ensure that the information obtained is passed to the person actually carrying out the



works and that he understands what safety precautions are required. Pipe locators should only be used by experienced people who have received specific training on how to use them. They are used to check the accuracy of the record plans provided by the gas supply company; and trial holes are dug to confirm the positions of gas pipes; and

- (5) After locating the underground electricity cables or gas pipes; mark their alignment and depth on the road surface clearly.

In the course of works, take all reasonable measures including:

- (1) Maintain adequate safety clearance from underground electricity cables or gas pipes during excavation;
- (2) Provide proper support to any underground electricity cables or gas pipes exposed in an excavation and provide proper backfilling where appropriate; and
- (3) Buried pipes may look similar to each other, making them difficult to identify. If you are not sure what a pipe is, always assume that it is in use and that it may be hazardous until the appropriate utility company has advised otherwise.



工作守則

由電力法例部及氣體安全監督編制之《有關在供電電纜附近工作實務守則》及《避免損壞氣體喉管》工作守則分別訂定了有關在供電電纜和在氣體喉管附近進行工程，以及擬進行工程的人員與供電商/氣體供應公司進行的諮詢工作的準則。該工作守則可於機電工程署網頁 www.emsd.gov.hk 瀏覽。



Codes of Practice

The Electricity Legislation Division and Gas Authority have prepared "Code of Practice on Working near Electricity Supply Lines" and Code of Practice on "Avoidance of Damage to Gas Pipes" respectively. These Codes of Practice set standards for carrying out works near electricity supply lines and gas pipes, and for consultation between people proposing to carry out works and the electricity suppliers/gas supply companies. These Codes of Practice can be accessed via EMSD's website at www.emsd.gov.hk.

罰則

任何人士違反《供電電纜（保護）規例》或《氣體安全（氣體供應）規例》，即屬違法，一經定罪，可處罰款不逾\$200,000 及監禁12個月。



Penalties

Any person who contravenes the Electricity Supply Lines (Protection) Regulation or Gas Safety (Gas Supply) Regulations is liable on conviction not exceeding a fine of \$200,000 and imprisonment for 12 months.

查詢 Enquiries

地址 Address：九龍啟成街3號
3 Kai Shing Street, Kowloon

電話 Tel：1823

傳真 Fax：2895 4929

（電力法例部

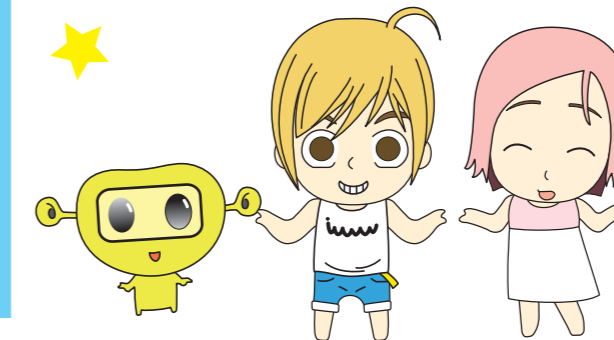
Electricity Legislation Division）

2576 5945

（氣體安全監督 Gas Authority）

電郵 Email：info@emsd.gov.hk

網址 Website：www.emsd.gov.hk



避免損壞地底氣體喉管及電纜

Avoidance of Damage to Underground Gas Pipes and Electricity Cables



引言

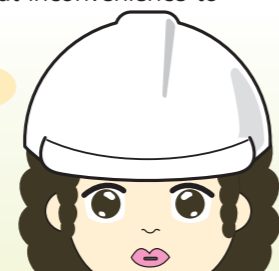
工程承建商在地下電纜或氣體喉管附近地方進行挖掘或貫穿地面或地底工程時，例如進行水務、渠務、消防、電訊電纜、環境美化或重鋪路面等工程時，若沒有採取安全預防措施，便有可能損壞地下電纜或氣體喉管。如損壞地下電纜，則可能導致電力意外及電力供應故障；如損壞地下氣體喉管，則可能會引起氣體泄漏、火警或爆炸等事故，威脅工人及市民的安全。而供電電纜或供氣主喉受破壞亦可能嚴重影響附近地區之電力或氣體供應，對市民造成極大不便。

為免發生上述事故，《電力條例》(第406章)下制定的《供電電纜(保護)規例》及《氣體安全條例》(第51章)下的《氣體安全(氣體供應)規例》分別規定在供電商擁有的地下電纜或地下氣體喉管附近進行工程前，工程承建商須先取得有關設施資料，並須採取一切合理步驟以確定供電電纜或氣體喉管的所在地點及位置。於施工時，亦須採取一切合理措施以保護電纜或氣體喉管免受損毀。

Introduction

Works contractor who carries out works, such as water works, drainage works, fire services works, telecommunication cabling works, landscape works, or road resurfacing works etc., near underground electricity cables or gas pipes involving excavation or any other means of penetrating the ground at or below surface level, may damage the underground electricity cables or gas pipes if safety precautions have not been taken. Damaging underground electricity cables may cause electrical accidents and power interruption; damaging underground gas pipes may lead to gas leaks, fires or explosions, posing risks to the workers and the general public. Damage to the electricity cables or gas mains may also seriously disrupt electricity or gas supplies to the surrounding area, causing great inconvenience to the general public.

To prevent captioned incidents, the Electricity Supply Lines (Protection) Regulation made under the Electricity Ordinance (Cap. 406) and Gas Safety (Gas Supply) Regulations under the Gas Safety Ordinance (Cap. 51) require separately that, prior to carrying out works in the vicinity of underground electricity cables owned by electricity suppliers, or underground gas pipes, certain information relating to them should be obtained by the works contractor and all reasonable steps should be taken to ascertain the existence of these electricity cables or gas pipes. In the course of works, all reasonable measures should also be taken to protect these cables or gas pipes from damage.



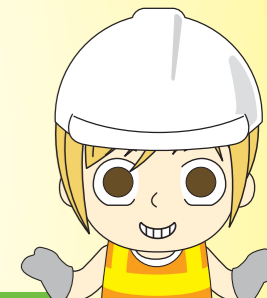
注意事項

進行工程前，須採取一切合理步驟，包括：

- (1) 向供電商/氣體供應公司索取有關附近地下電纜/氣體喉管位置的資料及圖則；
- (2) 要求由機電工程署署長根據《電力條例》(第406章)認可的合資格人士，測定地下電纜/氣體喉管的準線及深度；並由承建商及/或實際進行工程的人員負責確定電纜/氣體喉管的位置；
- (3) 於確定地下電纜位置時，須進行無源探測及確定挖掘試孔的位置，並在合資格人士監督下，挖掘試孔使目標電纜外露，接着進行環形有源探測以確定未外露地下電纜的位置，並向工地人員提供「合資格人士書面報告」及安排工地簡報會，向工地人員解釋報告內容及安全預防措施；



- (4) 於確定地下氣體喉管位置時，承建商須確保實際進行工程的人員能查閱所取得的資料，以及清楚知道須採取的預防步驟。另外，須由曾接受使用喉管定位器的特定訓練，並富經驗的人士使用喉管定位器，以檢查氣體供應公司所提供紀錄圖則的準確程度；並挖掘試孔以確定喉管位置；及
- (5) 當確定地下電纜或氣體喉管位置後，須在路面加上清楚標記，標示其準線和深度。



於施工期間，應採取一切合理措施，包括：

- (1) 在挖掘時，與地下電纜或氣體喉管保持足夠的安全距離；
- (2) 對挖掘時外露的地下電纜或氣體喉管，提供足夠支撐及作適當的回填；及
- (3) 各類地底喉管外型可能十分相似，因此往往很難辨別。如不清楚喉管屬何類別，除非已獲有關的公用事業公司通知，否則須假設喉管是在使用中，並且可能帶有危險。