

## 罰則

合資格人士在進行電纜探測工作時，如未能達致應有的合理水平，可被暫時吊銷該合資格人士的認可達12個月。

## Penalties

A competent person failing to perform cable detection work to the reasonably expected standard may have his/her approval as a competent person suspended for a period up to 12 months.

備註：本資料文件並非法律文件，只供參考之用。

Note: This is NOT a legal document and is prepared for general information only.

電力法例



機電工程署

香港九龍啟成街3號  
Electricity Legislation  
Electrical and Mechanical Services Department  
3 Kai Shing Street, Kowloon, Hong Kong  
電話 Tel.: (852) 1823 傳真 Fax: (852) 2895 4929  
網址 Homepage: [www.emsd.gov.hk](http://www.emsd.gov.hk)  
電郵 E-mail: [info@emsd.gov.hk](mailto:info@emsd.gov.hk)

# 認可合資格人士 地下電纜探測8步曲

## Approved Competent Person 8 Steps for Underground Cable Detection



## 引言

《供電電纜（保護）規例》規定，在挖掘工程進行前，合資格人士應進行電纜探測以確定是否有地下電纜，並量度該地下電纜的準線及深度。

探測地下電纜是專業工作，合資格人士必須由機電工程署署長認可，並根據「有關在供電電纜附近工作實務守則」內所列出的步驟進行探測工作。

合資格人士應注意以下事項：

1. 不得將電纜探測工作的責任轉授予他人；
2. 可在其他人士的協助下進行電纜探測工作，但該等人士的工作須由該合資格人士直接監督；
3. 在進行電纜探測工作時，須以不會導致地下電纜受損的方法進行；
4. 如確實難以探測有關的地下電纜，必須向供電商尋求協助；
5. 在探測工作完成後，須向工地負責人提交「合資格人士書面報告」，並向工地人員講解報告內容。



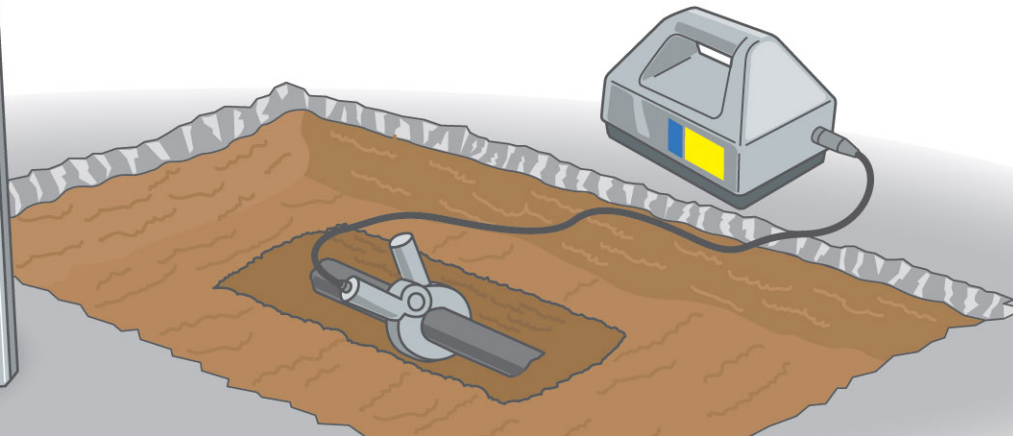
## Introduction

The Electricity Supply Lines (Protection) Regulation requires that a competent person shall undertake cable detection to ascertain the existence, alignment and depth of underground electricity cables before excavation.

Cable detection is a specialized job. The competent person must be approved by the Director of Electrical and Mechanical Services and shall carry out the cable detection according to the steps as stipulated in the “Code of Practice on Working Near Electricity Supply Lines”.

The competent person shall pay attention to the following items:

1. shall not delegate his duty of cable detection work to another person;
2. may carry out cable detection work with the assistance of other persons, but such persons shall be directly supervised by that competent person;
3. shall carry out cable detection work in a manner without causing damage to the underground electricity cables;
4. if there is any difficulty in detecting the underground cables, assistance from the power company must be sought ;
5. shall provide a “Competent Person Written Report” to the responsible person of the work site and give a site briefing to the site personnel.

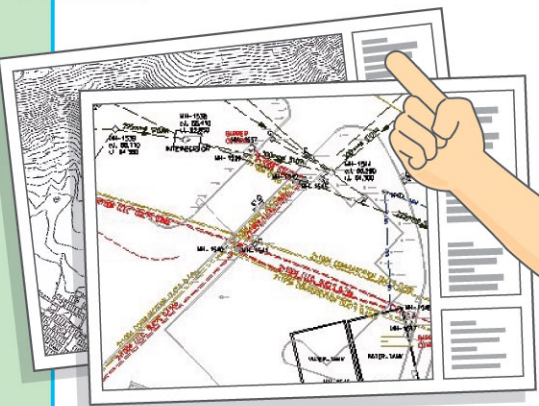


## 合資格人士應遵循以下的地下電纜探測步驟：

A competent person should follow the following underground cable detection procedures:

# 1

取得施工工地位置圖及供電商的電纜圖則。  
Obtain works site drawings and electricity supplier's cable plans.



# 3

監督挖掘試孔使所有目標地下電纜外露。  
Supervise the excavation of trial holes in order to expose all target underground electricity cables.



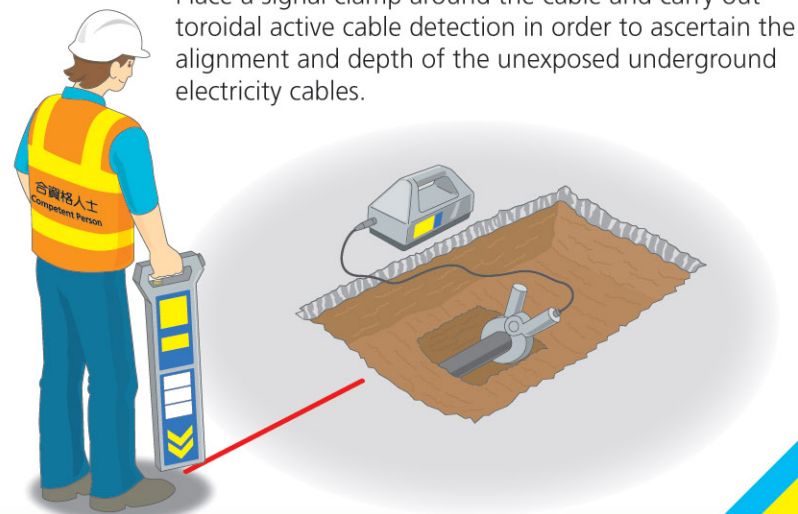
# 2

進行無源電纜探測及建議挖掘試孔的位置。  
Carry out passive cable detection and propose trial hole locations.



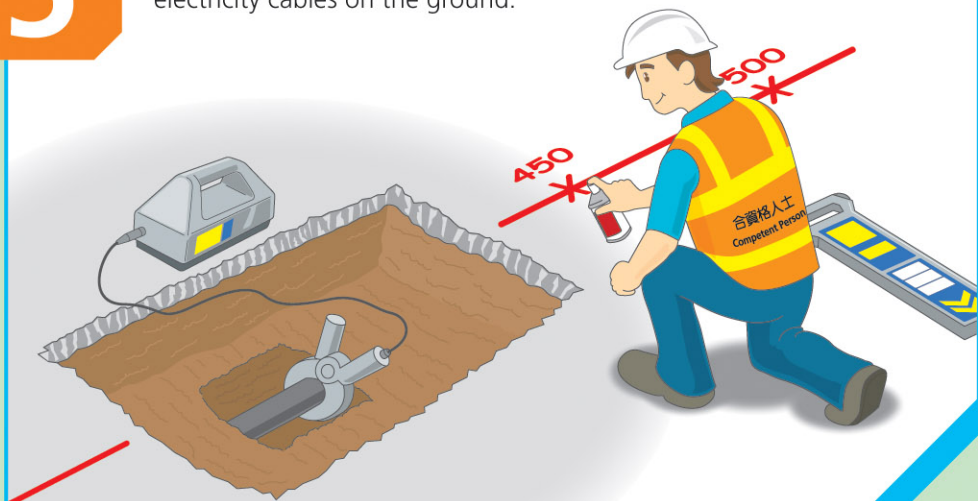
# 4

把訊號鉗鉗在電纜上，並進行環形有源電纜探測以確定未外露地下電纜的準線和深度。  
Place a signal clamp around the cable and carry out toroidal active cable detection in order to ascertain the alignment and depth of the unexposed underground electricity cables.



5

在地面上標示地下電纜的準線和深度。  
Mark the alignment and depth of underground electricity cables on the ground.



7

向施工者\*提交「合資格人士書面報告」。  
Provide a "Competent Person Written Report" to the working party\*.

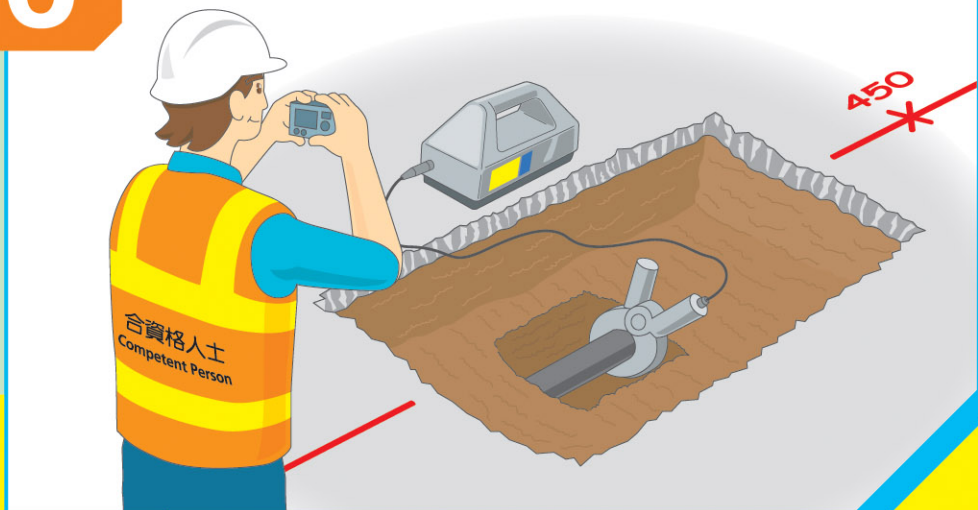
註：「施工者」指任何策劃、設計、安排及監督在地下電纜或架空電纜附近進行工程的人士，包括承建商、工地承建商及工地人員。

\*Note: "Working Party" means any person, including contractor, site contractor and site personnel, concerned with planning, designing, organizing and supervising works near underground electricity cables or overhead electricity lines.



6

拍攝照片以記錄電纜探測過程。  
Take photos to record the cable detection process.



8

舉行工地簡報會，向工地人員解釋報告內容及安全預防措施。  
Conduct site briefing to site personnel to explain the contents of the Report and the safety precautions.

