

電力安全 從小做起

Learning habits of
Electrical Safety at Young Age



電力法例



機電工程署

香港九龍啟成街3號

Electricity Legislation

Electrical and Mechanical Services Department

3 Kai Shing Street, Kowloon, Hong Kong

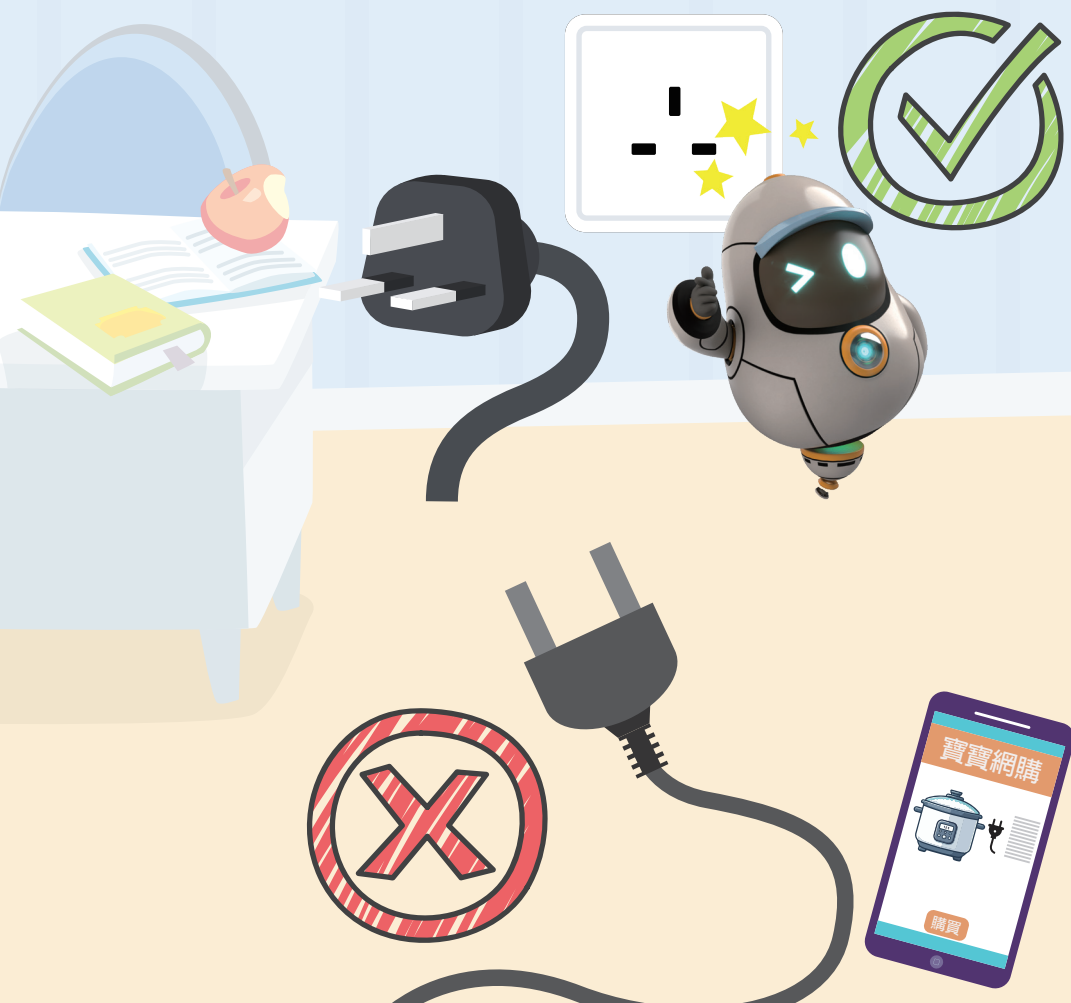
電話 Tel: (852) 1823 傳真 Fax: (852) 2895 4929

網址 Website: www.emsd.gov.hk

電郵 Email: info@emsd.gov.hk

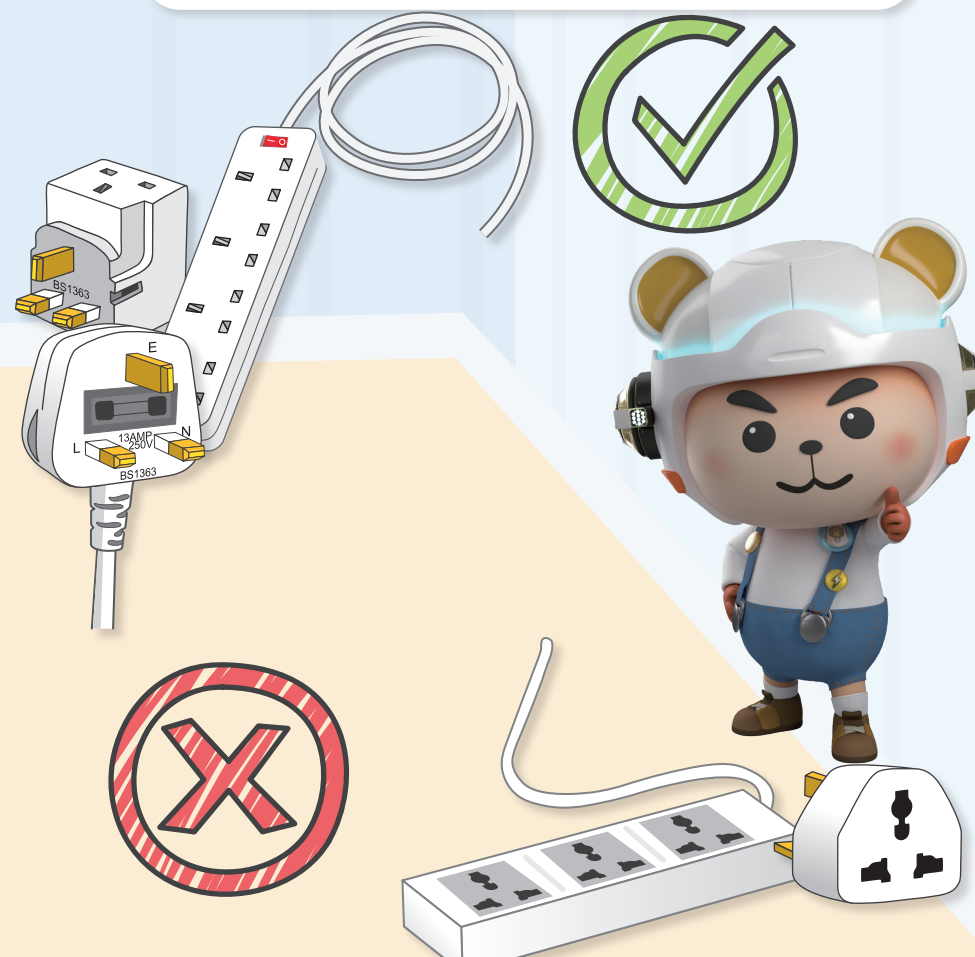


使用配備三腳插頭的電器。
Use electrical appliances
fitted with 3-Pin Plugs.



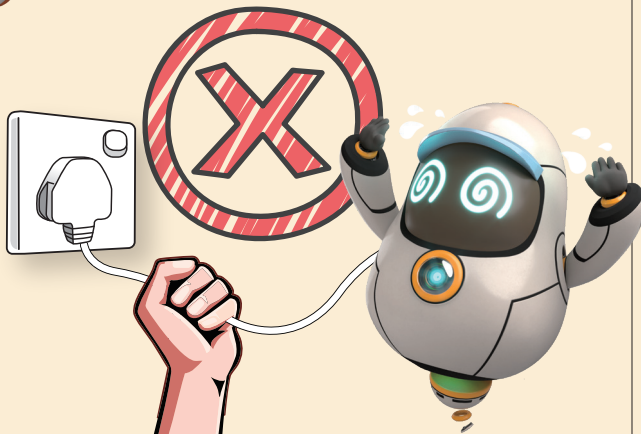
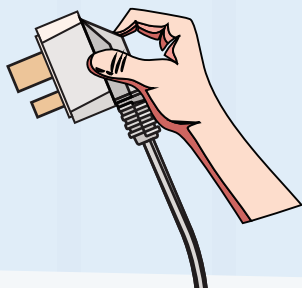
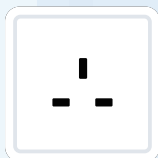
切勿使用不規則插孔的萬能蘇
或拖板。

Do not use adaptors or
extension units with
irregular holes.



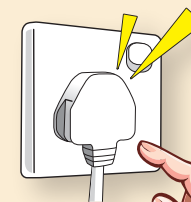
切勿拉扯電器的軟電線以
拔出插頭。

Do not unplug an electrical
appliance by pulling its
flexible power cord.



手濕時切勿觸摸電器的開關
和插座。

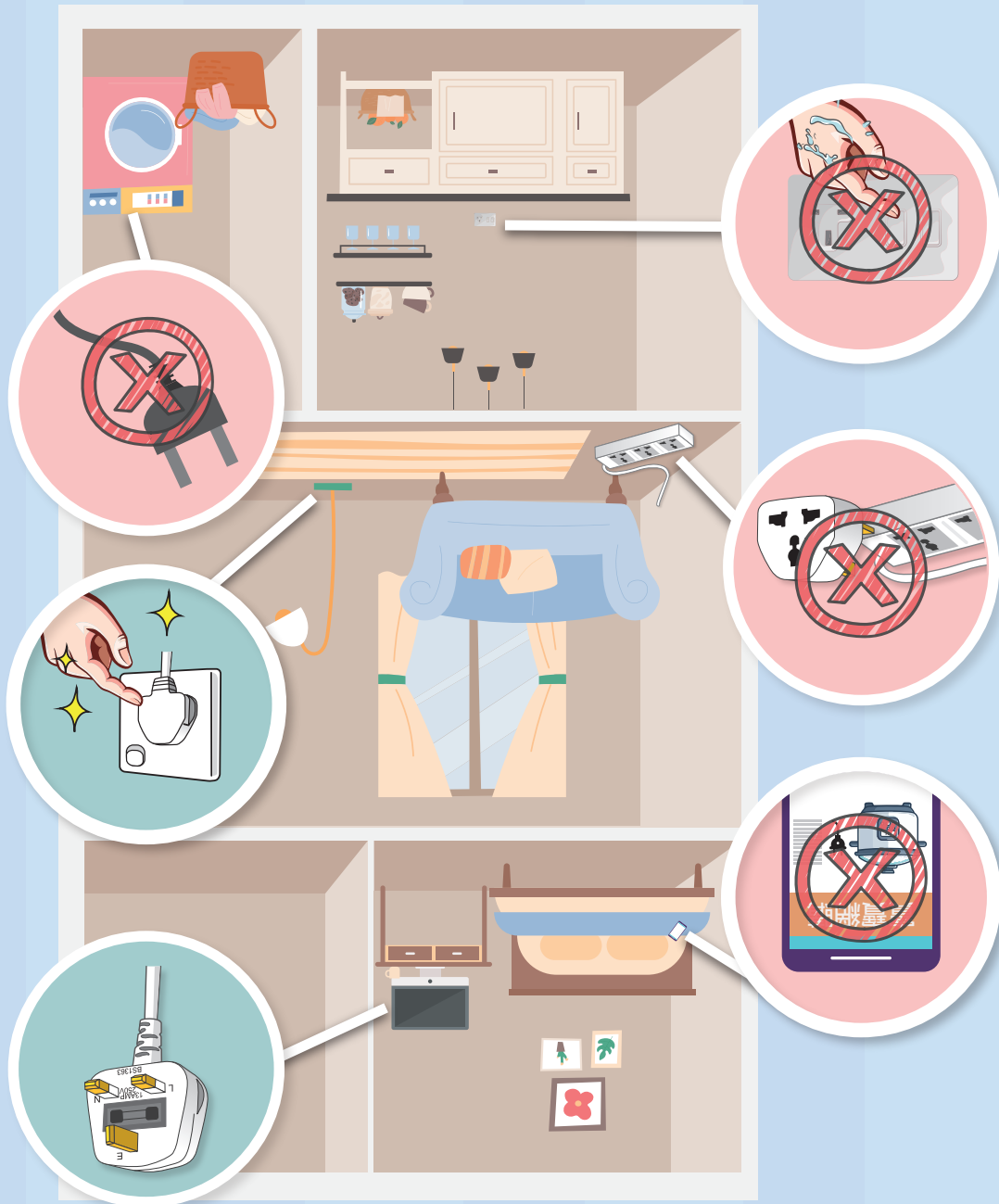
Do not touch the switch
and socket with wet hands.





找錯處

What's wrong?



Check this out!

答案

