

本地選購
Select Locally

正確使用
Use Properly

定期保養
Maintain Regularly

如欲查看更多安全須知，請掃描以下二維碼以瀏覽有關網站：
For more safety tips, please scan the following QR Codes to visit the website:



中文



English

電力法例  機電工程署

香港九龍啟成街3號

Electricity Legislation

Electrical and Mechanical Services Department

3 Kai Shing Street, Kowloon, Hong Kong

電話 Tel: (852) 1823 傳真 Fax: (852) 2895 4929

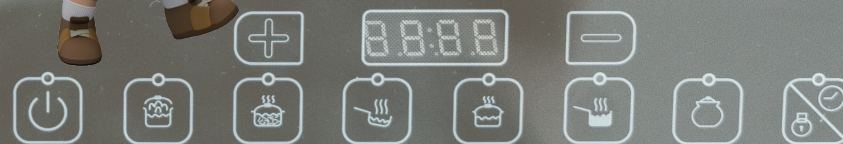
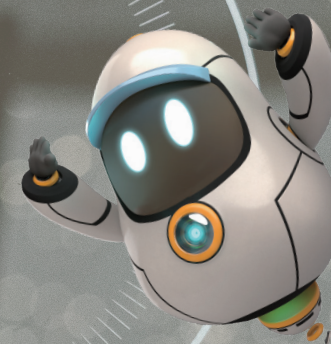
網址 Website: www.emsd.gov.hk

電郵 Email: info@emsd.gov.hk

機電工程署出版
Published by the Electrical and Mechanical Services Department

電磁爐安全須知

Safety Tips for Induction Cookers



機電工程署
EMSD



**如爐面爆裂或有其他異常情況，
應立即關掉電磁爐。**

Switch off an induction cooker if its surface is cracked or there is any abnormal condition.



確保電磁爐通風良好。

Ensure good ventilation for an induction cooker.

**遵照說明書指示使用及保養電磁爐，
並安排有經驗的技師進行定期檢查。**

Adhere to the user manual for use and maintenance of an induction cooker and arrange regular checks by an experienced technician.



**切勿把刀、叉、匙、蓋等金屬物品
放在電磁爐上。**

Do not place metallic objects such as knives, forks, spoons and lids on an induction cooker.

**烹調後應關掉電磁爐，並切勿即時
觸摸電磁爐面。**

Switch off an induction cooker after use.
Do not touch the induction cooker surface immediately.



**切勿在供電給電磁爐的插座上接駁
其他電器。**

Do not connect other electrical appliances to the same socket outlet supplying an induction cooker.

