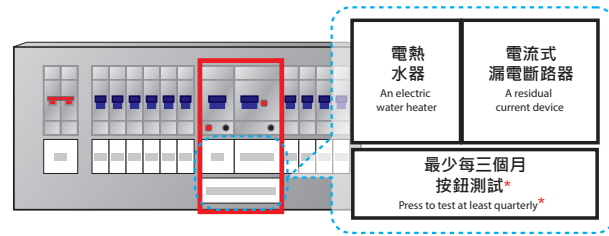
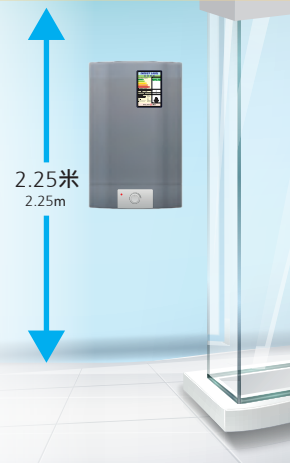


若浴室內裝有電熱水器，而該電熱水器裝設於完工地板水平以上2.25米之內，其供電電路便應裝設電流式漏電斷路器作保護。

If an electric water heater is installed at a height not exceeding 2.25m above finished floor level in a bathroom, its supply circuit should be equipped with a residual current device (RCD) for protection.



- * 註冊電業承辦商須評估實際情況，並按照《電力(線路)規例工作守則》的規定安裝固定電力裝置及其供電電路。
- * Registered Electrical Contractor shall assess the actual condition, and install the fixed electrical installation and its supply circuit in compliance with the requirements of the Code of Practice for the Electricity (Wiring) Regulations.

- * 應最少每三個月按電流式漏電斷路器的內置測試按鈕，以確保其運作正常。
- * Press the built-in test button of the RCD at least quarterly to ensure it functions properly.

使用電熱水器後，應關掉電源。

After using an electric water heater, disconnect the power supply.



如欲查看更多安全須知，請掃描以下二維碼以瀏覽有關網站：

For more safety tips, please scan the following QR Codes to visit the relevant website:



中文



English

電力法例



機電工程署

香港九龍啟成街3號

Electricity Legislation

Electrical and Mechanical Services Department

3 Kai Shing Street, Kowloon, Hong Kong

電話 Tel.: (852) 1823 傳真 Fax: (852) 2895 4929

網址 Website: www.emsd.gov.hk

電郵 Email: info@emsd.gov.hk

電熱水器

的安全須知

Safety Tips for Electric Water Heaters



新安裝電熱水器時，固定電力裝置及水管須分別由註冊電業承辦商及水務署所要求的指定人士[#]進行安裝。

For new installation of an electric water heater, the fixed electrical installations and water pipes must be installed by a registered electrical contractor and a designated person[#] as required by the Water Supplies Department (WSD) respectively.

[#]有關指定人士的詳情，請瀏覽水務署網站 www.wsd.gov.hk

For details of the designated persons, please visit the WSD's website at www.wsd.gov.hk



如電熱水器在使用時出現任何異常(例如跳掣)，應立即停止使用，並聯絡供應商進行檢查和維修。

If any abnormalities (such as tripping) are found when using an electric water heater, stop using it immediately and contact the supplier for inspection and repair.

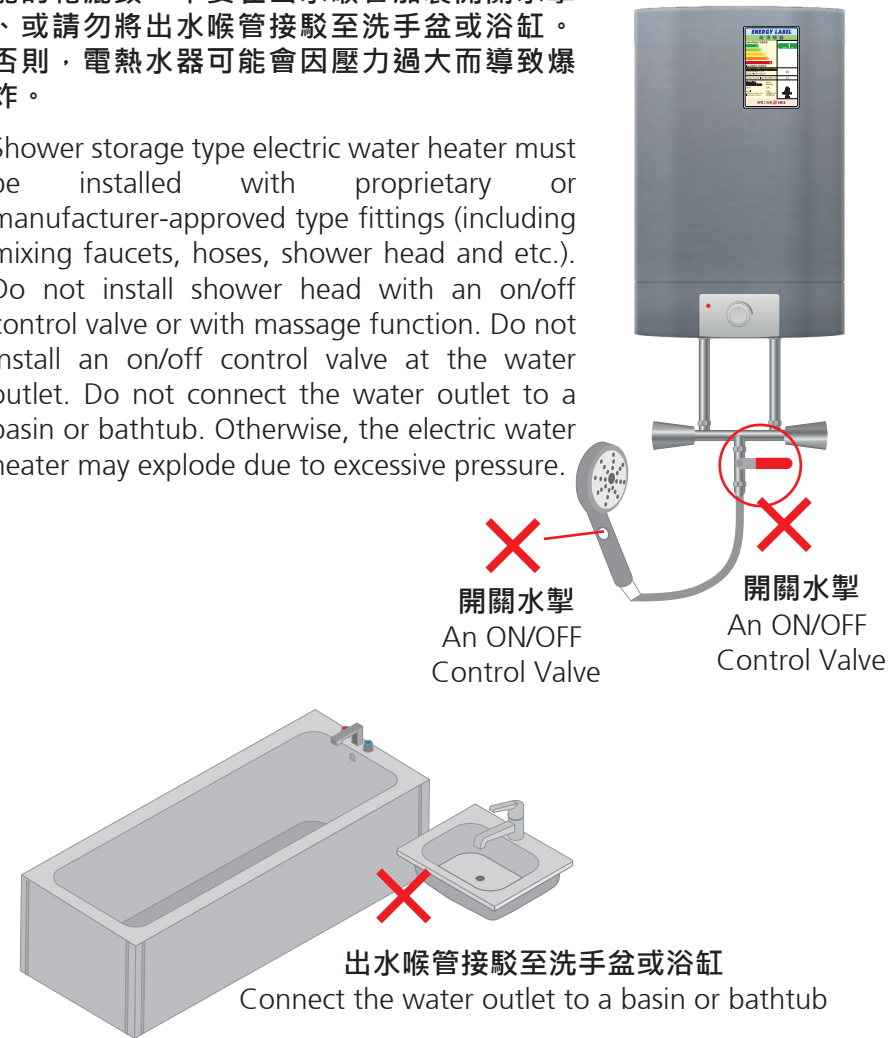
定期安排檢查和保養電熱水器。

Arrange inspection and maintenance for an electric water heater regularly.



花灑儲水式電熱水器必須採用原廠或生產商認可的配件(包括混合水龍頭裝置、水喉及花灑頭等)。不要安裝設有開關水掣或有按摩功能的花灑頭、不要在出水喉管加裝開關水掣、或請勿將出水喉管接駁至洗手盆或浴缸。否則，電熱水器可能會因壓力過大而導致爆炸。

Shower storage type electric water heater must be installed with proprietary or manufacturer-approved type fittings (including mixing faucets, hoses, shower head and etc.). Do not install shower head with an on/off control valve or with massage function. Do not install an on/off control valve at the water outlet. Do not connect the water outlet to a basin or bathtub. Otherwise, the electric water heater may explode due to excessive pressure.



花灑儲水式電熱水器的安全核對項目表

Shower Storage Type Electric Water Heater Safety Checklist

如果你的電熱水器有以下的任何特徵:

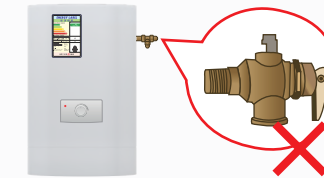
If your electric water heater has any of the following characteristics:

沒有配備溫度及壓力排放閥

Not equip with temperature and pressure relief valve

有類似的警告標示

With similar warning notice



或 / 及
or / and

警告

出水位只可接駁製造商生產的原裝水龍頭或配件，不能接駁任何水掣阻塞出水。

WARNING

This outlet must only be connected to an original tap or fitting produced by the manufacturer. No on/off control valve shall be installed.

請參照以下的安全核對項目表

Please follow the safety checklist below

項目 Item	核對事項 Description	核對結果 Result	參考圖像 Reference Photo
1	電熱水器採用原廠或生產商認可的配件(包括混合水龍頭裝置、水喉及花灑頭等)。 The electric water heater is equipped with proprietary or manufacturer-approved type fittings (including mixing faucets, hoses, shower head and etc.)	是 / 否 True / False	
2	花灑頭沒有按摩功能以及花灑頭或出水喉管沒有配備開關水掣。 The shower head does not have massage function and the shower head or the water outlet is not equipped with an on/off control valve.	是 / 否 True / False	 開關水掣 ON/OFF Control Valve
3	出水喉管沒有接駁至洗手盆、浴缸或其他衛生設施。 The water outlet is not connected to basin, bath tub or other sanitary facilities.	是 / 否 True / False	

如以上任何一個核對結果為 "否"，應立即停用有關的花灑儲水式電熱水器，並聯絡供應商進行檢查和維修。

If any of the above checking result is "False", you should stop using the shower storage type electric water heater immediately and contact the supplier for inspection and repair.