

# 電力快訊

## ELECTRICITY NEWS

# SPECIAL ISSUE



### Continuing Professional Development Scheme for Registered Electrical Workers – New Module 3 Training Mode

The Electrical and Mechanical Services Department (EMSD) has implemented the Continuing Professional Development (CPD) Scheme for Registered Electrical Workers (REWs) since 1 January 2012, with the aim to enhance the electricity safety and technical knowledge of REWs. Under the CPD Scheme, REWs are required to complete Module 1 and Module 2 training prior to the submission of licence renewal applications. Since the launch of the CPD Scheme, the EMSD has reviewed the training from time to time and discussed with the trade on the updating of training materials so as to meet the training objectives and needs. At present, the CPD Scheme provides training for about 26 000 REWs every year.

In order to enhance REWs' self-learning ability, foster self-learning culture among REWs, and broaden their professional knowledge and ability while maintaining training records systematically, the EMSD carried out a review on the CPD Scheme and consulted the trade in 2020. As agreed by the Electrical Safety Advisory Committee (ESAC) at its meeting in September 2020, the CPD Scheme will be further expanded to include Module 3 training that allows for voluntary participation and documentation. Unlike the mandatory training requirements for Module 1 and Module 2, Module 3 training is on a voluntary basis, and is not part of the licence renewal requirements for the REWs.

Starting from 1 January 2021, the CPD Scheme has included the Module 3 training with details as follows:

#### 1 REWs have to complete a training covering the following Module 1 and 2 before submitting a licence renewal application:

Module	Item	Content
<b>Module 1</b>	Legislative and Safety Requirements	Legislative requirements in Electricity Ordinance, Electricity (Registration) Regulations, and Electricity (Wiring) Regulations and safety requirements in conducting electrical work
<b>Module 2</b>	Technical Knowledge	Knowledge relating to design, installation, maintenance, testing and commissioning of electrical installation

#### 2 REW may participate in Module 3 training and record the diversified learning on a voluntary basis:

Module 3 training is not limited to legislative and safety requirements, and technical knowledge. Instead, it encourages REWs to adopt a balanced and diversified way of learning in their continuing professional development, thus strengthening their self-learning ability and culture, as well as broadening their professional knowledge in the aspects of occupational safety and health, innovation and technology, and other electrical and mechanical skills. It enables REWs to achieve the objectives of continuing and diversified development. In the long run, it would further enhance the technical and safety knowledge level of the electrical trade as a whole.

Participation in Module 3 is voluntary, and with no restrictions on mode of learning. Watching videos, reading articles or publications, attending courses, lectures or seminars are acceptable. The scope of training should cover:

- Electrical work safety;
- Occupational safety and health;
- Occupational safety and health regulations; or
- Other electrical and mechanical technology related topics, including but not limited to:
  - Quality monitoring;
  - Environmental protection;
  - Innovation and technology; or
  - Other courses on mechanical and electrical skills enhancement.

[www.emsd.gov.hk](http://www.emsd.gov.hk)

《電力快訊》的中英文版本可於以上網頁瀏覽  
The English and Chinese versions of the Electricity News may be viewed on the above website.

機電工程署  
EMSD



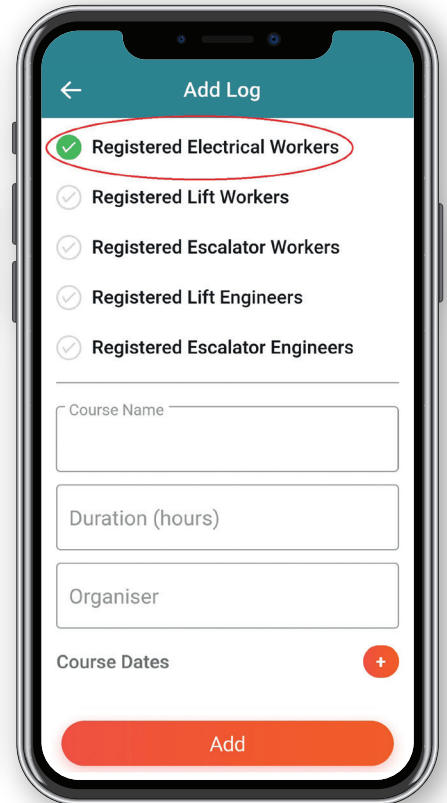
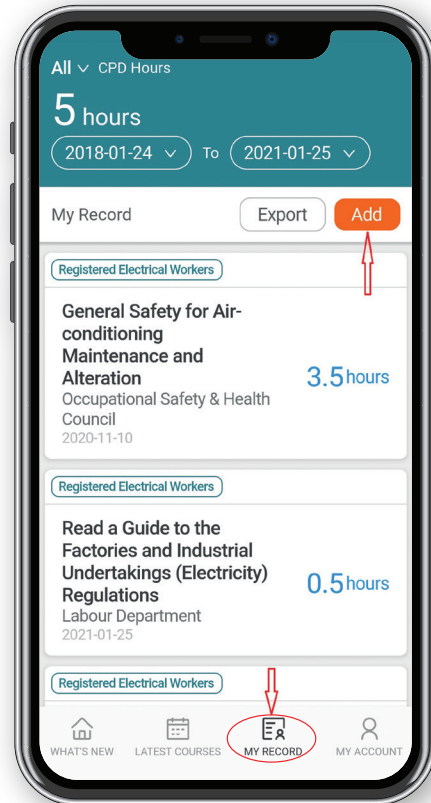


The recorded information will only be used on the REW's personal record and for reference purposes. It will not be used for the renewal of REW licence.

For details of the CPD Scheme, please refer to the EMSD website:  
<http://www.emsd.gov.hk> >  
 Electricity Safety > CPD Scheme for REW



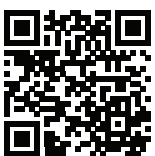
Upon completion of Module 3 training, REWs may update the record using the E&M Trade App. REWs may go to "My Record" in the mobile application, select "Add", and fill in the relevant information of the course, including the registration type of the course, course name, duration, organiser and course date, for record purpose. Screenshots of the relevant pages in the E&M Trade App are as follows.



### Online Appointment Booking Service of Registration and Permit Office

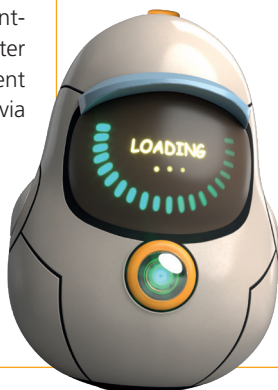
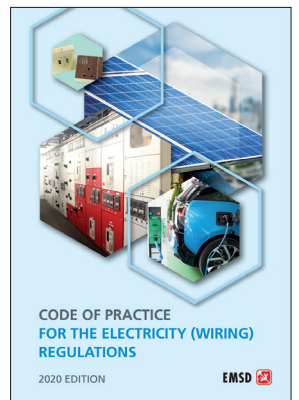
On 26 January, the EMSD introduced an online appointment booking service for members of the public and the trade to make appointments for the counter services of the Registration and Permit Office.

Please scan the QR code below to make an appointment, or go to the EMSD website ([www.emsd.gov.hk](http://www.emsd.gov.hk) > Menu > Appointment Booking Service – RPO) to register for the required services. The appointment booking system may also be accessed via the E&M Trade App.



### New Version of Code of Practice for the Electricity (Wiring) Regulations Published

The 2020 edition of the Code of Practice for the Electricity (Wiring) Regulations (CoP) has been published. The CoP can be downloaded free of charge from the EMSD website ([www.emsd.gov.hk](http://www.emsd.gov.hk)). Printed copies of the CoP can be purchased from the Publications Sales Unit of the Information Services Department at Room 626, 6/F, North Point Government Offices, 333 Java Road, North Point, or ordered by phone at 2537 1910, by visiting the online Government Bookstore at [www.bookstore.gov.hk](http://www.bookstore.gov.hk) or by e-mail to [puborder@isd.gov.hk](mailto:puborder@isd.gov.hk).



The new version of CoP can be downloaded from the EMSD website: <http://www.emsd.gov.hk> > Electricity Safety > New Edition of Code of Practice > New Edition of the Code of Practice for the Electricity (Writing) Regulation