

# 機電安全 長者關心

## Electrical Safety for Our Seniors

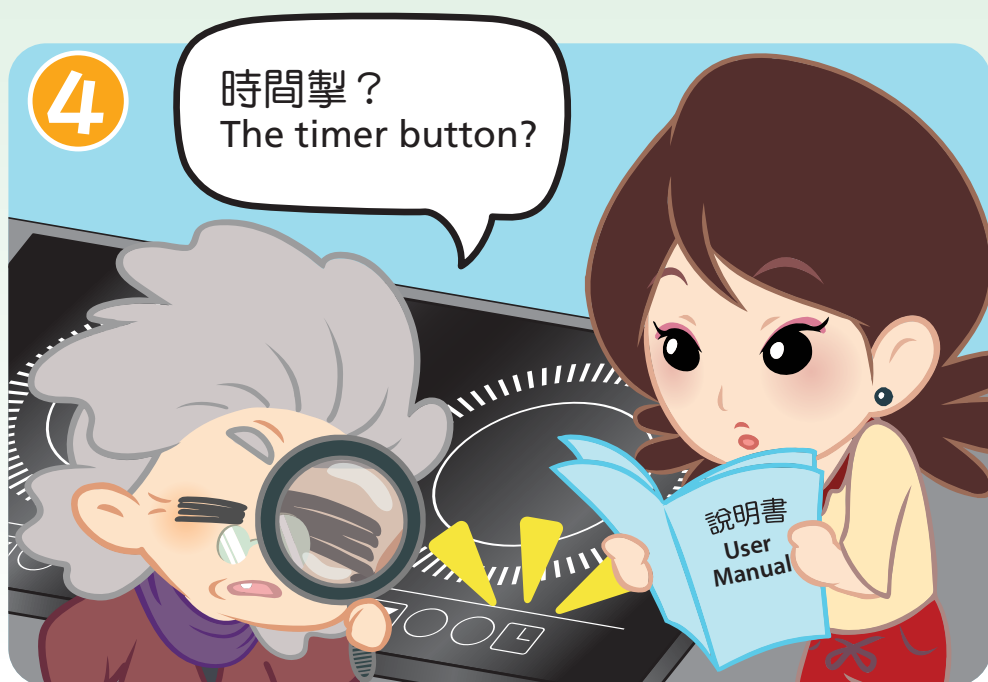


1

終於找到了！  
I found it!

2

婆婆，快來廚房看看！  
Grandma, please come into  
the kitchen and see!



5



6

切勿在無人看管下使用電磁爐煮食，即使已用預設時間掣，也可能會發生火警。

Do not cook with an unattended induction cooker. Even if you already set the cooking time, there is still a fire risk.



7

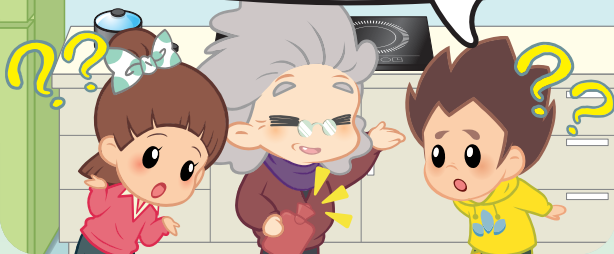
明白了。  
Got it.



8

婆婆，你為什麼拿着暖水袋？

Grandma, why are you holding the hot water bottle?



9

近日天氣轉涼，舊的電熱氈不夠熱，我想加暖水袋一起用。

It has turned cold recently. The old electric blanket is not warm enough, I want to use the hot water bottle to keep warm.



OH

10



你千萬別這樣做啊！因為這是非常危險的！

Don't! It's very dangerous.



明白了。  
Got it.

11



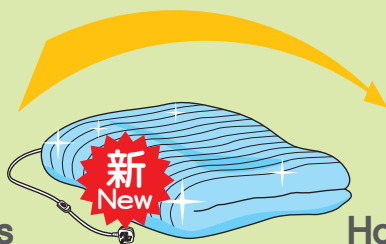
12



我快要到外地旅行，正好順道買一張新的電熱氈回港使用。

I am going on a trip. I will buy a new electric blanket to use in Hong Kong.

外地  
Overseas



香港  
Hong Kong

# 選購安全電器小貼士

## Safety tips on buying electrical appliances

- ★ 選購的電器如在香港使用，額定電壓須為220伏特交流電。  
Appliances intended for use in Hong Kong must have a rated voltage of 220V a.c.



- ★ 選購附有適當標記的電器（例如：牌子、型號、額定電壓、頻率及功率）。

Appliances must come with suitable labeling (e.g. brand, model, rated voltage, frequency and power)

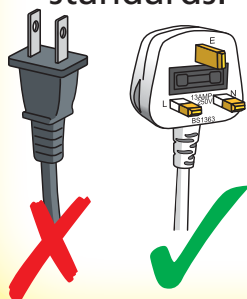


### SAFETY BRAND 安全牌

Model No.	產品型號:	A234
Rated voltage	電壓:	220V
Frequency	頻率:	50Hz
Power	功率:	1000W

- ★ 選購裝有符合安全規格插頭的電器。

Appliances must come with plugs that meet safety standards.



浴室內的鬚刨  
供電裝置及插頭







電力法例



機電工程署

香港九龍啟成街3號  
Electricity Legislation  
Electrical and Mechanical Services Department  
3 Kai Shing Street, Kowloon, Hong Kong  
電話 Tel.: (852) 1823 傳真 Fax: (852) 2895 4929  
網址 Homepage: [www.emsd.gov.hk](http://www.emsd.gov.hk)  
電郵 E-mail: [info@emsd.gov.hk](mailto:info@emsd.gov.hk)