



正確使用 + 定期檢修 → 安全用電  
Proper Use + Regular Maintenance → Electrical Safety

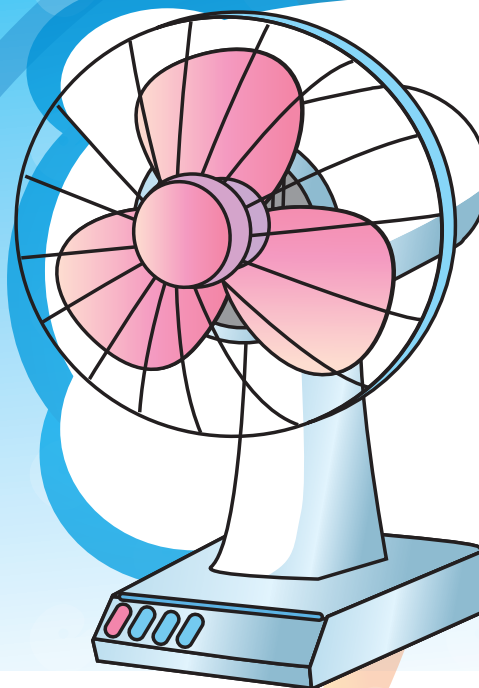
電力法例  機電工程署

香港九龍啟成街 3 號  
Electricity Legislation  
Electrical and Mechanical Services Department  
3 Kai Shing Street, Kowloon, Hong Kong  
電話 Tel.: (852) 1823 傳真 Fax: (852) 2895 4929  
網址 Homepage: [www.emsd.gov.hk](http://www.emsd.gov.hk)  
電郵 E-mail: [info@emsd.gov.hk](mailto:info@emsd.gov.hk)

# 電風扇

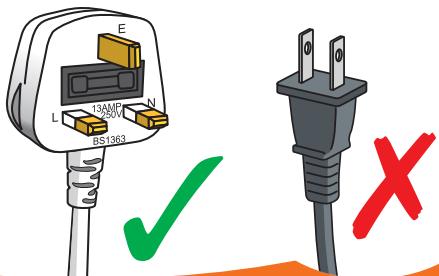
## 安全須知

### Safety Tips for Electric Fans

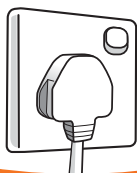




★ 裝有三腳插頭。  
Fitted with a 3-pin plug.



★ 避免讓電風扇在無人看管下操作，外出前應關掉電源。  
Avoid leaving an operating fan unattended.  
Switch off power before going out.



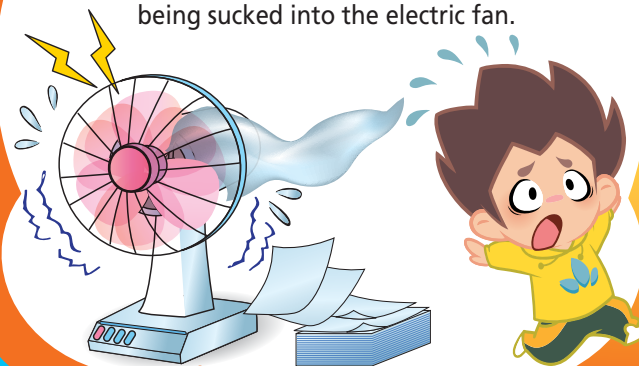
關  
OFF



★ 遵照說明書的指示，定期清理。  
Clean the electric fan regularly according to the user manual.



★ 避免讓紙張和衣物等物件捲入電風扇。  
Prevent paper and clothes, etc. from being sucked into the electric fan.



★ 若發現操作不正常（例如噪音或震動過大，或有異味），應立即停用及安排維修。  
If any abnormalities (e.g. excessive noise or vibration, or abnormal smell) are detected, stop the fan and arrange for repair.

