

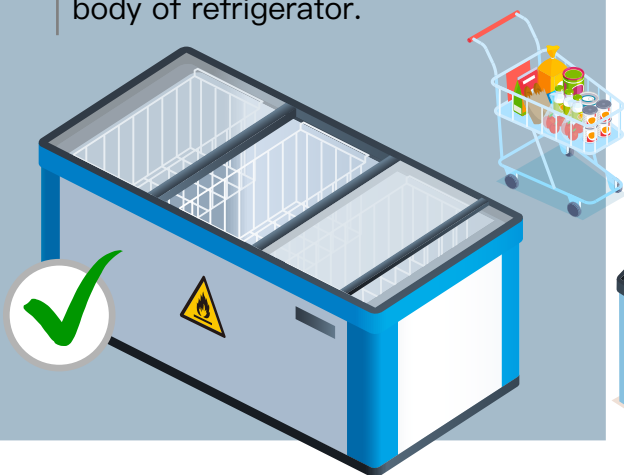
易燃雪種安全知多點

Know More About Flammable Refrigerant Safety

商用雪櫃 Commercial Refrigerators



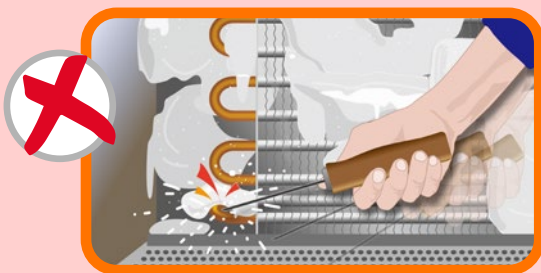
- 1** 機身應該貼有火焰標誌。
Flame symbol should be affixed on body of refrigerator.



- 2** 確保安裝產品地點的房間面積及環境符合製造商指明的要求。
Ensure room area and environment requirements for installation complied with manufacturer's requirement.



- 3** 除了製造商建議的方法外，切勿使用尖銳工具或其他方法加快溶雪過程。
Do not use sharp tools or means other than those recommended by the manufacturer to speed up the defrosting process.



- 4** 如需保養、維修、拆除、回收或棄置含易燃雪種的商用雪櫃，應與有關代理商 / 供應商 / 承辦商聯絡以安排進行有關工作，切勿自行處理。
Contact the agent/supplier/contractor for arranging the work related to maintenance, repair, dismantling, recycling or disposing of a commercial refrigerator with flammable refrigerant. Do not do it yourself.

