



About EMSD

Organisational Profile

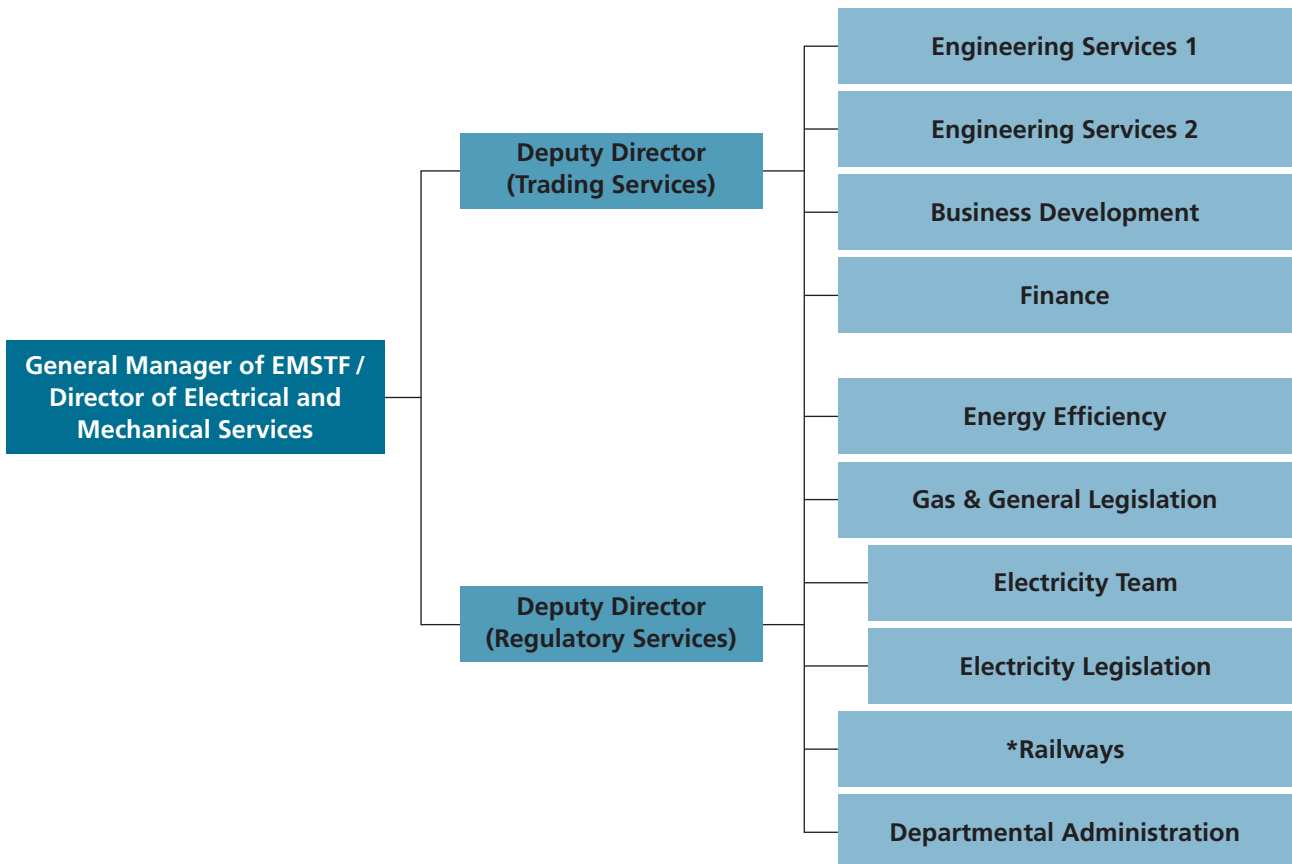
The Electrical and Mechanical Services Department (EMSD) plays a dual role. Its **Trading Services**, known as the **Electrical and Mechanical Services Trading Fund (EMSTF)**, delivers electrical, mechanical, electronic engineering and building services to government departments and public institutions in Hong Kong while its **Regulatory Services (RS)**, provides a regulatory framework to ensure the safety of the public in a number of electrical, mechanical and gas engineering areas via enforcement of safety ordinances, and public education.

In serving our customers, the EMSTF provides a wide range of consultancy and value-added engineering and maintenance services to ensure that the many systems that keep Hong Kong up and running continue to do so effectively and efficiently. We serve more than 100

government departments and public bodies in Hong Kong, including the airport, hospitals, schools, security forces, transport and highways, port and harbour as well as public recreation and leisure facilities, areas that make up the very fabric of life in Hong Kong.

Within the community, the RS issues Guidelines and Codes of Practice and administers the safety ordinances on the safe use of gas, electricity, lifts and escalators, railways, tramways and amusement rides, among others. At the same time, we are actively involved in promoting energy efficiency and the protection of the environment through services and activities both for our customers and the community, and through our support for the Government's environmental initiatives. We are actively involved in the introduction of LPG vehicles, for example, and in studies of renewable energy sources in Hong Kong.

EMSD Organisational Structure



* Established in February 2008