

點「點」雷達站 Whose Radars Where?

我們的客戶部門在香港多個地區建立不同類型的雷達站，為社會大眾提供更佳服務。機電工程署為雷達站提供專業維修服務，務求它們在任何時候都運作暢順，以下是部分的雷達站。

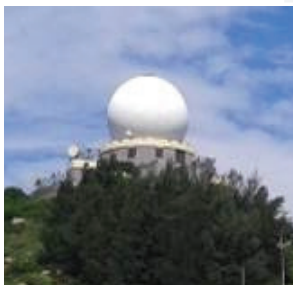
你知道它們的位置、所屬部門和功能嗎？（答案在內頁找）

Our client departments build different kinds of radar stations in various parts of Hong Kong to better serve the community. Below are some stations for which EMSD provides professional maintenance services to ensure their proper functions at all times.

Do you know their locations, department owners and functions? (Please find answers in inside pages.)



A



B



C



D

答案 Answers:

A 橫瀾島 Waglan Island

所屬部門 Owner：海事處 Marine Department
用途 Use：為香港東部水域進行船隻航行監察
Vessel traffic monitoring for eastern sector of Hong Kong waters

B 沙洲 Sha Chau

所屬部門 Owner：民航處 Civil Aviation Department
用途 Use：探測機場進場及離場範圍內的飛機
Aircraft surveillance within the approach and departure areas of airport

C 啟德郵輪碼頭 Kai Tak Cruise Terminal

所屬部門 Owner：海事處 Marine Department
用途 Use：為維多利亞港進行船隻航行監察
Vessel traffic monitoring for the Victoria Harbour

D 大嶺涌 Tai Lam Chung

所屬部門 Owner：香港天文台 Hong Kong Observatory
用途 Use：探測由對流風暴引起的風切變和微下擊暴流，以保障航空安全
Detection of windshear and microburst associated with convective storms to enhance aviation safety